



# Bathroom Ventilation

featuring

## Premium *Choice* Series Ventilation Fans



Also with  
**TD-MIXVENT and PV-POWERVENT**  
Bathroom Exhaust Kits

# Premium *Choice* Series Ventilation Fans

## The Fan of your CHOICE

To protect the two most valuable investments of your life, your home and your family, improving indoor air quality is key. S&P fans remove air quickly, quietly and efficiently, extracting pollutants and moisture before they wreak havoc on your home.



**PC50**



**PCLP50 • PCLP80 •  
PCLP100**



**PC80X • PC110X •  
PC150**



**PCD110M • PCD110H  
(DC Motor)**



**PC with  
Lighted Grille Kit**



**PC with  
Motion Sensing  
Grille Kit**



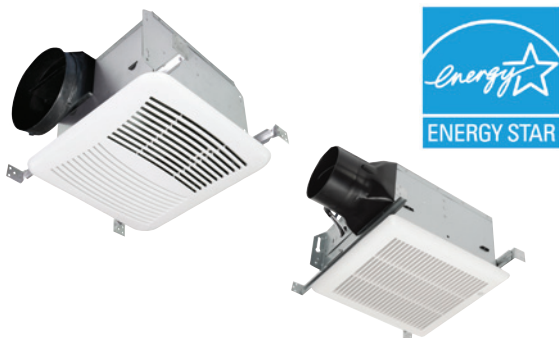
## Energy Concerns Solved



If saving money & conserving energy are concerns, S&P PC80X, PC110X, PC150, PCLP50, PCLP80, PCLP100, PCD110H and PCD110M fans are ENERGY STAR® qualified. Our fans come standard with high efficiency motors and lighting to reduce energy consumption without sacrificing performance. ENERGY STAR® qualification is especially important when using the PC fan as a whole-house fan that may run all the time. You can learn more about ENERGY STAR® at [www.energystar.gov](http://www.energystar.gov).

# Premium *Choice* Series Ventilation Fans

## Standard Models



### Features & Construction

- Extremely quiet operation <math><0.3</math> to 1.1 Sones
- Totally enclosed condenser motor for long life
- Motor rated for 30,000 hours continuous on
- Built-in backdraft damper
- Robust steel housing
- Attractive, sturdy grille
- ETL Listed
- PC80X, 110X & 150 are ENERGY STAR® qualified
- HVI Certified
- 5-year warranty
- Options: Lighted or Motion Sensing Grilles, Speed Control, Humidity Sensor, Metal Grille, and Radiation Damper

# Premium *Choice* Series Ventilation Fans

## Standard Models

### Performance and Dimensions

	PC50	PC80X*	PC110X*	PC150
CFM @ 0.1/0.25" SP	50/31	80/58	96/70	150/110
		80/63	110/87	
Sones	0.6	0.4	1.1	1.1
		<0.3	0.6	
Watts	16	32	36	41
Energy Efficiency (CFMs/Watts)	3.1	3.0	3.2	3.8
Amps	.13	.27	.30	.34
ENERGY STAR® Qualified	No	Yes	Yes	Yes
Duct Connector Diameter (in)	4"	4" or 6"		6"
Grille Size (in)	10.25" x 10.5"	13" x 14"		
Dimensions (w x d x h) (in)	9" x 9" x 5-3/4"	11-3/8" x 10-1/2" x 7-5/8"		

\*Air Performance test performed  
with 4 and 6" duct:

4" duct
6" duct



# Premium *Choice* Series Ventilation Fans

## Models with DC Motor



Most Efficient  
**2014**

[www.energystar.gov](http://www.energystar.gov)



### Features & Construction

- Extremely quiet operation 0.5 Sones
- Brushless DC motor for long life
- Motor rated for 60,000 hours continuous on
- PCD110M has a built-in motion sensor and LED night light
- PCD110H has a built-in humidity sensor
- High/Low speed delay timer
- Built-in backdraft damper
- Robust steel housing
- Attractive, sturdy grille
- ETL Listed
- ENERGY STAR® qualified
- HVI Certified
- 6-year warranty on DC Motor
- 5-year warranty on balance of unit

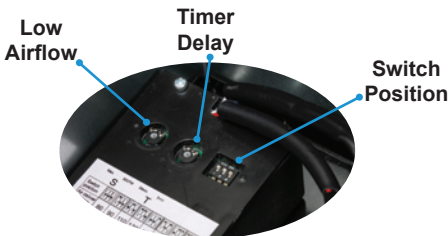
# Premium *Choice* Series Ventilation Fans

## Models with DC Motor

### You CHOOSE Your Airflow!

The built-in **Toggle Switches** and duct connector options allow you to set the PCD110M & PCD110H to the needed airflow:

### Integrated Controls



Switch position								
Airflow (CFM)	80	90	110	120	90	110	120	140
Duct diameter (inches)	4"	4"	4"	4"	6"	6"	6"	6"

1 & 2: Airflow • 3: Duct size  
Factory setting is 110 CFM with 6" duct

### Performance and Dimensions

PCD110M & PCD110H					
CFM @ 0.1" SP	4" Duct	80	90	110	120
	6" Duct	90	110	120	140
Sones	4" Duct	0.7	0.7	1.0	1.2
	6" Duct	0.3	0.5	0.8	1.1
Watts	4" Duct	5.5	7	11.5	13
	6" Duct	5.5	10	11.5	14.5
Energy Efficiency (CFM/Watt)	4" Duct	14.5	12.9	9.6	9.2
	6" Duct	16.4	11	10.4	9.7
Amps		.16	.18	.22	.23
ENERGY STAR® Qualified		Yes			
Duct Connector Diameter (in)		4" or 6"			
Grille Size (in)		13" x 14"			
Dimensions (w x d x h) (in)		11-3/8" x 10-1/2" x 7-5/8"			





# Premium *Choice* Series Ventilation Fans

## *Low Profile Models*



### **Features & Construction**

- Low profile housing design
- Suitable for wall and ceiling installations
- Quiet operation <0.4 to 2.0 Sones
- Totally enclosed condenser motor for long life
- Motor rated for 30,000 hours continuous on
- Built-in backdraft damper
- Robust steel housing
- Attractive, sturdy grille
- ETL Listed
- ENERGY STAR® qualified
- HVI Certified
- 5-year warranty



# Premium *Choice* Series Ventilation Fans

## Low Profile Models

### Performance and Dimensions

	PCLP50	PCLP80	PCLP100
CFM @ 0.1" SP	50	80	100
Sones	0.4	1.2	2.0
Watts	25	25	25
Energy Efficiency (CFMs/Watts)	2.0	3.2	4.0
Amps	.35	.35	.40
ENERGY STAR® Qualified	Yes	Yes	Yes
Duct Connector Diameter (in)	4" Oval		
Grille Size (in)	13" x 14"		
Dimensions (w x d x h) (in)	10-1/4" x 10-1/4" x 3-3/4"		
Bathroom Size (up to ft <sup>2</sup> )	45	75	95



# The Premium *CHOICES*

S&P's Premium CHOICE Series gives you maximum flexibility to create the bath ventilation system that you need. The simplicity of S&P's PC fans is in the options. While other premium bath fans come as lighted fans or humidity sensing fans; with a speed control or humidity sensor built-in, our Premium CHOICE bath fans give you the flexibility to choose your grille and control separately. Our fans even allow you to change your mind after you install them!



Our Premium CHOICE bath fans come with standard grilles and you have the option of a lighted grille or motion sensing grille. You pick the fan model, the grille and the controls you need. The CHOICE is yours!

## **Grille CHOICES**

Lighted Grille Kits: PCLK (Plug-&-Play)

Motion Sensing Grille Kits: PCMK (Plug-&-Play)

Metal Grille: PCMG

## **Control CHOICES**

Humidity Sensor: PCHS (Plug-&-Play)

Speed Control: PCSC (Plug-&-Play)

3-Switch Control: PC3S

ASHRAE 62.2 Controls: FT622 or FT247

## **Accessory CHOICES**

Radiation Damper: PCRD

4" duct collar: PCDC4

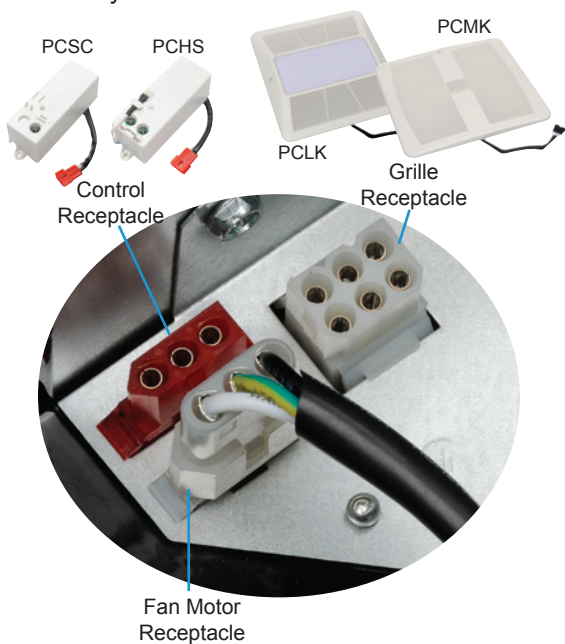
6" duct collar: PCDC6



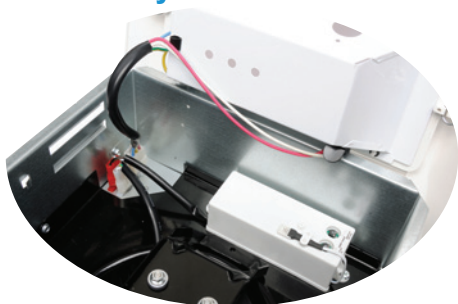
# Plug-&-Play Flexibility

S&P's unique Plug-&-Play option makes your CHOICE easy. There is a receptacle to plug-in your control CHOICE. Whether it's a PCSC-Speed Control or a PCHS-Humidity Sensor the control connects to the receptacle and easily mounts into the pre-drilled holes inside the fan housing.

There is also a receptacle for your grille CHOICE. Need a lighted fan? Choose the PCLK-Lighted Grille Kit. Need a motion sensing fan? Choose the PCMK-Motion Sensing Grille Kit. Either grille easily plugs into the grille receptacle to give you the fan of your CHOICE!



## PC with Lighted Grille and Humidity Sensor Installed



# Plug-&-Play CHOICE Controls

## Humidity Sensor (PCHS)

A PC fan with S&P's humidity sensing control detects rapid increases in moisture at the ceiling level where steam and humidity naturally rise, and automatically turns on the fan. The sensor easily mounts inside the fan housing utilizing 2 pre-drilled holes and a standard receptacle.

### Features

- Detects rapid rise in humidity
- Simple plug-in receptacle in fan housing
- Auto-shut off timer
- Accessible sensitivity adjustment
- Humidity is sensed at the ceiling
- Can be installed with new fan or as an add-on later if needed
- Meets CALGreen Bathroom Fan Requirement



---

## Speed Control (PCSC)

Using a PC fan with S&P's speed control is a simple solution for intermittent and continuous ventilation. The control easily mounts inside the fan housing utilizing 2 pre-drilled holes and a standard receptacle.

### Features

- Simple plug-in receptacle in fan housing
- Accessible speed adjustment
- Allows for adjustable continuous speed to meet ASHRAE 62.2
- High speed override
- Can be installed with new fan or as an add-on later if needed



# Plug-&-Play CHOICE Grilles

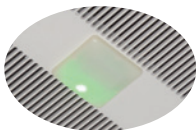
## Motion Sensing Grille Kit (PCMK)

S&P offers the Premium CHOICE Series Motion Sensing Grille Kit so you can have worry free bathroom ventilation. This kit fits the PC80X, 110X & 150. The grille kit includes a motion sensor, a speed control and a LED night light.

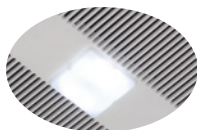
### PC with PCMK Installed



**PCMK Motion Sensor  
Activated**



**PCMK LED Night Light  
On**



---

## Grille Light Kit (PCLK)

S&P offers the Premium CHOICE Series Light Kit so you can have a fan with lights now or later. This kit fits the PC80X, 110X & 150. The lighted grilles come standard with a 13 watt GU24 fluorescent bulb (900 Lumens) and a 4 watt night light.

### PC with PCLK Installed



# Additional PC Options

## 3-Switch Control (PC3S)

The PC3S allows you to control three (3) features of a PC fan with one switch. Designed for PC fans with a Plug-&-Play grille and control option installed.



---

## Radiation Damper (PCRD)

- 3-hour rating ceiling radiation dampers
- UL Listed Link (165°F Standard)
- UL Approved flexible fire blanket
- Ceramic fiber with fiberglass cover
- Roll-formed frame 22 g. galvanized steel



---

## Metal Grille (PCMG)

- Ideal for commercial applications

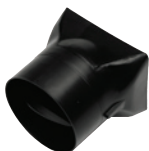


---

## Duct Collar CHOICES

4" duct collar: PCDC4

6" duct collar: PCDC6



# PC CHOICE Compatibility

The chart below indicates which plug-&-play or other PC accessories are compatible with each PC fan model:

Option	PC Standard Model			
	PC50	PC80X	PC110X	PC150
PCLK		✓	✓	✓
PCMK		✓	✓	✓
PCHS	✓	✓	✓	✓
PCSC	✓	✓	✓	✓
PC3S	✓	✓	✓	✓
PCRD		✓	✓	✓
PCMG		✓	✓	✓

Option	PC Models with DC Motor	
	PCD110H	PCD110M
PCLK	✓	
PCMK		Included
PCHS	Included	
PC3S	✓	✓
PCMG	✓	
PCRD	✓	

Option	PC Low Profile Models		
	PCLP50	PCLP80	PCLP100
PCMG	✓	✓	✓



**PCLK**  
Lighted Grille Kit



**PCMK**  
Motion Sensing  
Grille Kit



**PCMG**  
Metal Grille



**PCSC**  
Speed  
Control



**PCHS**  
Humidity  
Sensor



**PC3S**  
Three Switch  
Control



**PCRD**  
Radiation Damper



# PC CHOICE Compatibility

The chart below indicates which plug-&-play or other PC accessories can be used together:

	Standard Grille	PCLK	PCMK	PCHS	PCSC	PC3S	PCRD	PCMG
Standard Grille	-	-	-	✓	✓	✓	✓	-
PCLK	-	-	-	✓	✓	-	-	-
PCMK	-	-	-	-	-	✓	-	-
PCHS	✓	✓	-	-	-	-	-	✓
PCSC	✓	✓	-	-	-	✓	✓	✓
PC3S	✓	✓	✓	✓	✓	-	✓	✓
PCRD	✓	-	✓	✓	✓	✓	-	✓
PCMG	-	-	-	✓	✓	✓	✓	-



**PCLK**  
Lighted Grille Kit



**PCMK**  
Motion Sensing  
Grille Kit



**PCMG**  
Metal Grille



**PCSC**  
Speed  
Control



**PCHS**  
Humidity  
Sensor



**PC3S**  
Three Switch  
Control

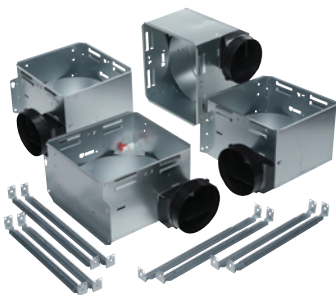


**PCRD**  
Radiation Damper

# Premium *CHOICE* Contractor Packs

For simple installation, the PC80X and PC110X are available as 4 packs with the fan housings ready for installation first, then after the drywall and painting are complete the motor and grilles are available to finish the job. The housing kit includes the housing and hanger bars. The motor and grille kit includes the motor plate, motor, wheel and standard grille.

Contractor packs can be ordered along with the PCLK Lighted Kits to make a lighted fan pack or PCMK Motion Sensing Kits to make a motion sensing fan pack (order 4 grille packs with the Motor & Grille pack).



**Housing Pack**



**Motor & Grille Pack**

Part #	Description (Packs of 4)
PCH	PC80X & PC110X Contractor Pack Housings
PC80F	PC80X Contractor Pack Motor and Grille
PC110F	PC110X Contractor Pack Motor and Grille

# PC Series & ASHRAE 62.2

The ASHRAE 62.2 Standard applies to all residential spaces that are “intended for human occupancy” in single family homes and multi-family structures up to three stories. These spaces include living rooms, bedrooms, kitchens, bathrooms, hallways, closets, store rooms, laundry rooms, garages, and basements.

There are 2 components of the ASHRAE 62.2 standard that relate to ventilation fans: Whole Building Ventilation & Local Exhaust.

## Local Exhaust Requirement

A local mechanical exhaust system shall be installed in each kitchen and bathroom:

- Kitchens: 100 CFM intermittent or 5 ACH continuous (based on kitchen volume)
- Bathrooms: 50 CFM intermittent or 20 CFM continuous

Use a PC Premium Choice Bath Fan in each bathroom to meet the ASHRAE 62.2 Local Exhaust Requirement. Please note each bathroom fan counts towards meeting the ASHRAE 62.2 Whole Building Requirement.



# PC Series & ASHRAE 62.2

## Whole Building Requirement

Required ventilation is based on the size of the house and number of expected occupants. Use the chart below to determine the best PC fan to meet the Whole Building Requirement.

Floor Area (sq. ft.)	Number of Bedrooms				
	0-1	2-3	4-5	6-7	>7
CFM Requirements/Recommended PC*					
<1500	30	45	60	75	90
	PC50	PC50	PC80X	PC80X	PC110X
	PCLP50	PCLP50	PCLP80	PCLP80	PCLP100
	PCD110M/PCD110H				
1501-3000	45	60	75	90	105
	PC50	PC80X	PC80X	PC110X	PC110X
	PCLP50	PCLP80	PCLP80	PCLP100	
	PCD110M/PCD110H				
3001-4500	60	75	90	105	120
	PC80X	PC80X	PC110X	PC110X	PC150
	PCLP80	PCLP80	PCLP100		
	PCD110M/PCD110H				
4501-6000	75	90	105	120	135
	PC80X	PC110X	PC110X	PC150	PC150
	PCLP80	PCLP100			
	PCD110M/PCD110H				
6001-7500	90	105	120	135	150
	PC110X	PC110X	PC150	PC150	PC150
	PCLP100				
	PCD110M/PCD110H				
>7500	105	120	135	150	165
	PC110X	PC150	PC150	PC150	PC150
	PCD110M/PCD110H				

\*PC recommended based on performance at .1 in. WG.

# ASHRAE 62.2 Control *CHOICES*

## FT622 - ASHRAE 62.2 Bath Fan Ventilation Control

The FT622 is designed to replace bathroom fan and light switches and provide both functions with one easy operation. By using a microprocessor to monitor and control operation, the FT622 delivers a precise amount of ventilation, and is a simple solution to meet ASHRAE 62.2 in conjunction with a S&P fan.



There are only two settings on the FT622: VENTILATION and DELAY. The VENTILATION setting allows the user to set the number of minutes per hour the fan should run. The DELAY setting allows the user to set the number of minutes the fan should run after the bathroom light has been turned off. The DELAY setting provides additional run time for the fan to complete the remaining necessary ventilation after use.

## Features

- Programmable DELAY and VENTILATION settings
- Excess manual and/or delay operation is subtracted from the next hour's programmed ventilation time
- Works with ALL incandescent, CFL, fluorescent and LED lights up to 450 watts
- Earn LEED and ENERGY STAR points for enhanced exhaust ventilation

# ASHRAE 62.2 Control *CHOICES*

## FT247 - Programmable Fan Timer

S&P offers the FT247 with easy programming for your bathroom fan ventilation needs. Simply set what time you want the fan to turn on and off and what day or days you want the fan to run.



### Features

- Provides 7 ON and 7 OFF events per day  
LCD display
- Rechargeable battery back-up
- Push button activation
- **Note:** Do not use with fluorescent lamp ballasts



# TD-MIXVENT Bathroom Exhaust Kits

If the strongest, quietest, bathroom exhaust system is what you seek... look no further. S&P offers the perfect solution with the most options. The TD-MIXVENT fan



kits provide all the hardware needed to complete a simple in-line ducted ventilation installation. The kit includes a powerful TD in-line fan and exterior and interior grilles (with or without lights). Available in both Standard Exhaust Kits, for venting a single location, and Deluxe Exhaust Kits, for venting multiple locations with one fan.

The TD-MIXVENT fan kit is the ideal solution for any simple in-line ducted fan installation.

**All TD kits have standard 7-year warranty.**





# TD-MIXVENT

## Bathroom Exhaust Kits

### Standard Exhaust Kits



#### **KIT-TD100**

- 1 TD100 exhaust fan
- 1 plastic round grille (PG-100)
- 1 exterior louvered grille (PER-100W)
- Integral mounting bracket

#### **KIT-TD100x**

- 1 TD100x exhaust fan
- 1 plastic round grille (PG-100)
- 1 exterior louvered grille (PER-100W)
- Integral mounting bracket

#### **KIT-TD150**

- 1 TD150 exhaust fan
- 1 plastic round grille (PG-150)
- 1 exterior louvered grille (PER-150W)
- Integral mounting bracket

### Deluxe Exhaust Kits



#### **KIT-TD150-DV**

- 1 TD150 exhaust fan
- 2 plastic round grilles (PG-150)
- 1 exterior louvered grille (PER-150W)
- 1 Y-fitting (SY-6)
- Integral mounting bracket

# TD-MIXVENT Bathroom Exhaust Kits

## Lighted Standard Exhaust Kits



### **KIT-TD100XL**

- 1 TD100x exhaust fan
- 1 Vent Light with LED Bulb (VLED-100)
- Integral mounting bracket

### **KIT-TD100XH**

- 1 TD100x exhaust fan
- 1 Vent Light with Halogen Bulb (VLH-100)
- Integral mounting bracket

### **KIT-TD100XF**

- 1 TD100x exhaust fan
- 1 Vent Light with Fluorescent Bulb (VLF-100)
- Integral mounting bracket

## Lighted Deluxe Exhaust Kits



### **KIT-TD150L**

- 1 TD150 exhaust fan
- 2 Vent Lights with LED Bulb (VLED-100)
- 1 Y-fitting (SY44-6)
- Integral mounting bracket

### **KIT-TD150H**

- 1 TD150 exhaust fan
- 2 Vent Lights with Halogen Bulb (VLH-100)
- 1 Y-fitting (SY44-6)
- Integral mounting bracket

### **KIT-TD150F**

- 1 TD150 exhaust fan
- 2 Vent Lights with Fluorescent Bulb (VLF-100)
- 1 Y-fitting (SY44-6)
- Integral mounting bracket

# PV-POWERVENT Bathroom Exhaust Kits

S&P PV-POWERVENT Series fans are also available as easy-to-install kits. This ultra powerful bathroom fan offers a choice of single or dual vent exhaust. These kits are used for installations that require long or complicated duct runs.

**All PV kits have standard 8-year warranty.**



## Standard Exhaust Kits



\*PV 150x and larger are ENERGY STAR® qualified.

### **KIT-PV100**

- 1 PV100 exhaust fan
- 1 plastic round grille (PG-100)
- Mounting bracket

### **KIT-PV100x**

- 1 PV100x exhaust fan
- 1 plastic round grille (PG-100)
- Mounting bracket

### **KIT-PV150**

- 1 PV150 exhaust fan
- 1 plastic round grille (PG-150)
- Mounting Bracket

# PV-POWERVENT Bathroom Exhaust Kits

## PV Deluxe Exhaust Kits



\*PV 150x and larger are ENERGY STAR® qualified.

### **KIT-PV100x-DV**

- 1 PV100x exhaust fan
- 2 plastic round grilles (PG-100)
- 1 Y-fitting (SY-4)
- Mounting Bracket

### **KIT-PV150-DV**

- 1 PV150 exhaust fan
- 2 plastic round grilles (PG-150)
- 1 Y-fitting (SY-6)
- Mounting Bracket

### **KIT-PV200-DV**

- 1 PV200 exhaust fan
- 2 plastic round grilles (BOR-200)
- 1 Y-fitting (SY-8)
- Mounting Bracket



# Also Available from S&P

## TD-SILENT Fans

As the name suggests these fans are extremely quiet, low profile “Mixed-flow” fans. Manufactured in plastic material with an external connection box, the body is easily dismantled with a two speed controllable 115V 60Hz motor. Sound waves are directed through the perforated inner skin and absorbed by a layer of sound-absorbent insulation. Plus the TD-SILENT is fitted with rubber gaskets on the inlet and outlet to absorb vibrations.



---

## PV-100XPS - Clothes Dryer Boosting

If you have a dryer with long or complicated duct runs, S&P offers the perfect solution to increase dryer efficiency: the PV100x Dryer Booster Fan. The PV-100x offers a fully enclosed motor with **Class F insulation** which ensures a long, trouble free life; thus making it the right choice for enhancing the performance of your clothes dryer.

S&P's PV-100XPS utilizes a compact pressure sensor and run timer enclosed within the junction box and mounted to the fan housing. The pressure sensor is also available as an accessory.





**S&P USA Ventilation Systems, LLC**

6393 Powers Avenue  
Jacksonville, FL 32217  
P. 904-731-4711 · F. 904-737-8322  
[www.spvg-northamerica.com](http://www.spvg-northamerica.com)

**S&P Canada Ventilation Products, Inc.**

5600 Ambler Drive  
Mississauga, ON L4W 2K9 - Canada  
Tel. 416-744-1217 · Fax 416-744-0887  
[www.solerpalaucanada.com](http://www.solerpalaucanada.com)

