

It can be installed on all
TYPES OF BUILDINGS



Its unique storm-proof deflector system makes it safer.

*Patent: Can : 2467956
USA : 6932690



SLOPED ROOF VENTILATORS

Manufactured by :

Ventilation Maximum Ltd
9229, Pierre Bonne
R.D.P., Montreal, Qc
H1E 7J6

www.ventilation-maximum.com

The Maximum ventilator

HOW IT WORKS

The Maximum Ventilator is a static ventilator which is used to replace stale, moist air within the attic space with fresh outside air which is being drawn in by the ventilator through the soffit air intake located on the underside of the eaves of the building and homes. The ventilator functions with the combined effects of wind and pressure differentials creating a chimney effect, thus drawing out the stale air out of the attic space. Both the Turbine and Maximum ventilators function the same, except now, the Maximum ventilator does not have to turn to prevent rain or snow infiltrations due to it's unique storm proof deflector built within.

That's right, the only reason the turbine is turning is to prevent rain and snow infiltrations into the attic.

Refer to a chimney with a fireplace or wood stove, do you see anything on top of the chimney that is turning to draw out the smoke ?, of course not. This is being done the same way as the ventilator, wind and pressure, and if you notice, as the velocity of the wind becomes stronger, the draw also becomes greater, thus forcing you to close the damper of the chimney flue so that you do not lose all your heat. The velocity of the wind is what activates these ventilators, but when comparing the Maximum ventilator with the turbine, there is another flaw with the turbine, the turning of the head of the turbine is also preventing the full effect of the wind, thus reducing the drawing power and capacity of ventilation area. The Maximum ventilator has no moving parts, and because of the design, it captures the full effect of the wind, producing a greater drawing power, thus a larger capacity of area to ventilate. The Maximum ventilator model 301 is capable of ventilating 1200 ft², as for the 12 in. turbine ventilator is capable of only 400 ft².

ADVANTAGES

- Protects your home from rain & snow infiltrations even in high gust of winds.
- Has no moving parts, uses no electricity, and requires no maintenance.
- Rodent resistant (birds, squirrels, etc.)
- Due to the height, it can withstand several snowstorms without being covered.
- Reduces the premature wear and rot of the building components.
- Reduces risk of ice damming, moisture condensation, mold & mildew.
- A constant and exceptional drawing power eliminates moisture accumulations within the attic space.
- Requires less holes in the roof.
- Applications for all types of buildings and roofing membrane including metal roofs, whether it be residential, commercial, institutional, or agriculture.

SPECIFICATIONS

- A static vertical ventilator working on the combined effects of wind and pressure differentials, thus, creating a chimney effect so that excess humidity can be diffused outside.
- The Maximum ventilators have no equivalent due to their unique stormproof deflector system proven efficient against possible infiltrations of rain or snow.
- Built from 24 and 26 gauge galvanized steel sheets and soldered galvanize steel mesh (mesh of 3.25 x 3.25 mm), all of which are treated to hold the final coats of paint according to specifications. Thicker gauge of steel are available on demand.

6 models for SLOPED ROOF

Secure and functional year long, this ventilator will allow you a peace of mind.



Model VMAX-302-8

Ajustable sloped flashing
from : 2/12 to 7/12
Ventilation area : 50 to 250 ft.²
Net Free Evacuation : 64 in.²



Model VMAX-302-12

Ajustable sloped flashing
from : 2/12 to 15/12
Ventilation area : 400 to 500 ft.²
Net Free Evacuation : 96 in.²



Model VMAX-303-12

Ajustable sloped flashing
from : 2/12 to 15/12
Ventilation area : 700 to 800 ft.²
Net Free Evacuation : 105 in.²



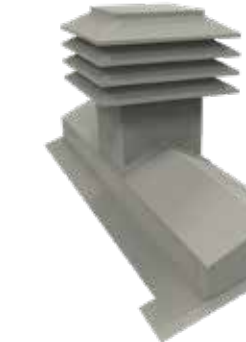
Model VMAX-301-12

Ajustable sloped flashing
from : 2/12 to 15/12
Ventilation area : 1000 to 1200 ft.²
Net Free Evacuation : 144 in.²



Model VMAX-401-12

Replacement head for any
12 in. round ventilator.
Adaptor : Sold separately for
10 & 14 in. units
Ventilation area : 800 to 1000
ft.²
Net Free Evacuation : 113 in.²



Model Cathedral System

Special order : Custom made to
the slope of the roof.
An insulated duct is installed on
the ridge of the roof, to assure
an efficient ventilation between
the joists of the roof.

Warranty

Limited lifetime
warranty on all
manufacturing
defects, 5 years on
paint and corrosion

Features

- Unique storm proof deflector.
- Exceptional drawing power.
- Built-in wire screen mesh.
- Adjustable flashing for slopes from 2/12 to 15/12.
- Finish : Interior and exterior powder coated polyester baked paint with UV protection.
- Colours : Black, brown and grey.

In compliance with:

- National Buildings Code of Canada
- National Air Flow Ventilator (CAN-3-A930M82) standards.
- CSA Standards
- ICC-ES Standards
- Miami Dade