

It can be installed on all  
TYPES OF BUILDINGS



Its unique shield deflector system makes it safer.

ROOF EXHAUST TRAP



Manufactured by :

Ventilation Maximum Ltd  
9229, Pierre Bonne  
R.D.P., Montreal, Qc  
H1E 7J6

[www.ventilation-maximum.com](http://www.ventilation-maximum.com)

# The Maximum roof exhaust traps

## HOW IT WORKS

### Ventilation Maximum Roof Exhaust traps

The Maximum Roof Exhaust Traps are mounted onto the roof to allow the discharge of washroom fans, kitchen hood ranges, air exchangers and clothes dryers.

It is common to see these exhaust units being discharged into attic roof vents, or down the soffits area and even straight into the attic space. A practice which is not recommended for it is only allowing the discharge from these exhausts to build up moisture condensation within the attic space. This will eventually cause problems such as mold & mildew, rot, loss of R value to the insulation, ice damming, water infiltrations, shingle deterioration as well as structural damages. (Imagine a washroom fan with an exhaust rate of 110 CFM, which translates to; 110 cubic feet per minute of moist air that is being discharged into the attic. Imagine if you have a combination of two or more!)

N.B. The soffits are the fresh air intake for attic air circulation and should not be used for discharging moisture. This exhaust will only re-enter the attic and defeat the purpose of ventilation and moisture control.

Other problems you may encounter are the intrusion of rodents. Why? Well why not! The exhaust is warm; the attic is infested with all the smell from the interior of the home, especially when cooking food. What animal would not want to get into the attic for just these reasons alone! This is why Ventilation Maximum designed and engineered the Roof Exhaust Traps using a thick gauge steel and provided a removable grill, thus discouraging these rodents from even trying!

Another advantage is the height of the exhaust trap. It is design and built high off the roof ( 5 3/4 in) allowing the wind to pick up the exhaust, rather than discharge directly onto the roof membrane where the smell can be absorbed, and in time, attract these rodents. Being at this height also reduces any risk of infiltrations of any kind!

The CT Roof Exhaust traps also have a built-in deflector which has three functions;

- Prevents back drafts and the clapping of the damper
- Deflect the exhaust out the sides rather than directly below, thus reducing the risks of melting the snow and causing ice dams that can eventually back up under the shingles and cause leaks.
- So that it may function, even when buried under snow!

The exhaust traps also have a built-in damper, which will open to release the exhaust and close when fans are shut off, thus reducing your energy bills! A small opening has also been designed within the damper of our CT models to release excess moisture within the ducts, between the fan unit and the exhaust trap, thus preventing any chances of moisture condensation from freezing up the damper, open or closed!

A built-in collar of the same dimension as the fan units, will allow the flow of the exhaust to continue up and out the exit of our CT models, without any restriction, thus reducing any risk of condensation from occurring within the unit itself.

For specific dimensions or special colours please visit our web site [www.ventilation-maximum.com](http://www.ventilation-maximum.com).

# 6 models for ROOF EXHAUST TRAPS

#### Model VMAX-CT-4

Sloped roof exhaust trap

Exhaust diameter : Built in 4 in. round diameter pipe.  
Height : 5 3/4 in. from roof deck to exhaust.  
Slope : From 2/12 to 15/12  
Colours : Black, brown, grey



#### Model VMAX-CT-AD-12

Slope or flat roof exhaust trap with one exit

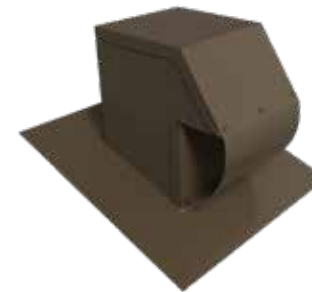
Exhaust diameter : For 4,5,6 in. exhaust.  
Height : 18 in. from roof deck to exhaust.  
Slope : Adjustable flashing for slope varying 2/12 to 15/12.  
Colours : Black, brown, grey



#### Model VMAX-CT-6

Sloped roof exhaust trap

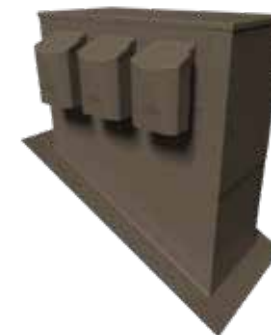
Exhaust diameter : Built in 6 in. round diameter pipe.  
Height : 5 3/4 in. from roof deck to exhaust.  
Slope : From 2/12 to 15/12  
Colours : Black, brown, grey



#### Model Multiple roof exhaust trap

Slope or flat roof exhaust trap

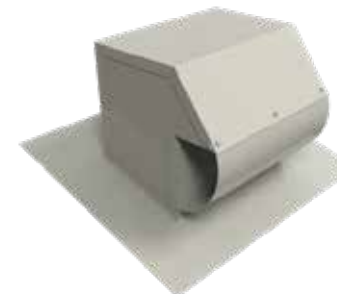
Exhaust diameter : For 3,4,5,6 in. and 3 1/4 x 10 in.  
Height : Per your specifications  
Base : Customized made to your specifications for slope or flat roofs.  
Colours : Black, brown, grey



#### Model VMAX-CT-10

Sloped roof exhaust trap

Exhaust diameter : Built in 3 1/4 x 10 in. rectangular collar.  
Height : 5 3/4 in. from roof deck to exhaust.  
Slope : From 2/12 to 15/12  
Colours : Black, brown, grey



Steel : Structural galvanized steel ZF75  
Gauge : 24 & 26  
Storm proof : Anti gust deflector  
Rodent proof : Built-in wire mesh screen  
Finish : Interior and exterior powder coated polyester baked paint with UV protection.  
Warranty : Limited Lifetime Warranty on all manufacturing defects, 5 years on paint & corrosion.