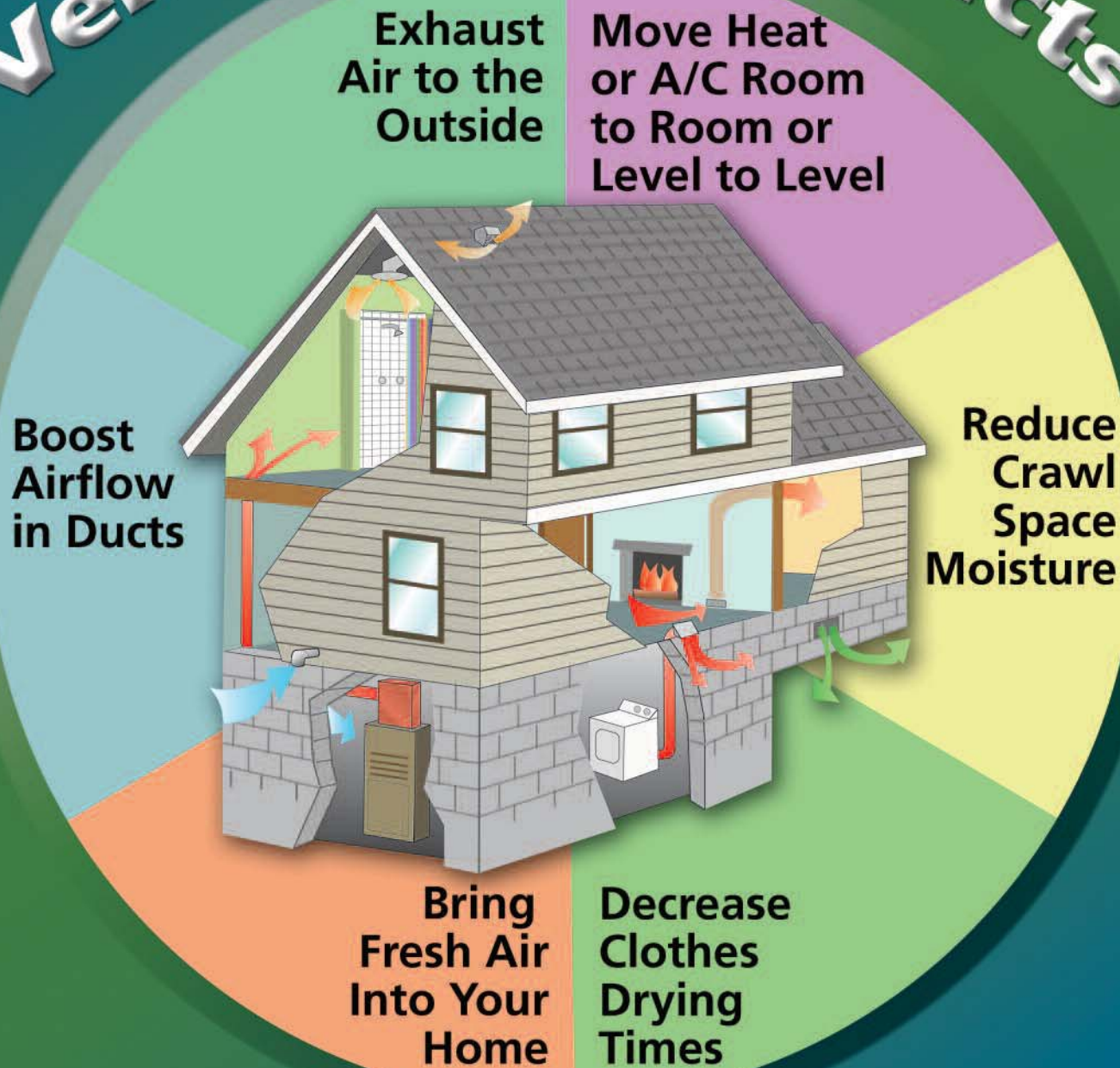




# Tjernlund

## Ventilation Products



*Innovative solutions for common ventilation problems*



Share Air Room To Room  
or Level to Level

Tjernlund's AireShare Ventilators move air to rooms that are too hot or cold. Quiet and low-profile, conditioned air moves through the wall or ceiling/floor to provide comfort.

- Blends with any décor
  - Classic grille and sleek diffuser
  - No exposed electrical cords
- Whisper quiet operation
  - Low sonic cross flow blower
- Easy to install
  - Quickly installs in interior finished walls or ceilings/floors



50% Quieter  
than any other  
Transfer Fan

Make hot or cold rooms more comfortable!

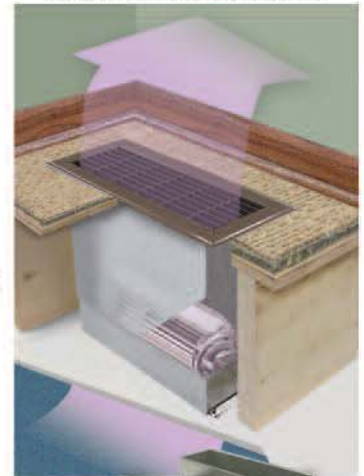
**Room to Room**

Perfect Companions for Homes with:

- Split Systems, Window A/C or PTACs
- Space Heaters, Fireplaces, Stoves or Electric Baseboard
- Hard to heat rooms or cool lower levels

Choose Room to Room hard wired model AS1 or concealed power cord model AS1P

**Level to Level**



**Specifications:**

Volts: 120	CFM: 75
Hertz: 60	RPM: 1800
Amps: 0.50 Maximum	Sound: AS1= 42dB (1.15 Sones)
Watts: 25	AS1P= 45dB (1.42 Sones)
	ASLL= 42dB (1.15 Sones)



Reduce drying times up to 50% in long or convoluted duct runs with the Dryer Duct Booster®

Clothes dryers are often installed in areas of homes where they cannot work effectively leading to long drying times, high energy use and lint build-up in ductwork. If a dryer's exhaust duct run is over 25 equivalent feet\* moist air cannot effectively exit the dryer and exhaust to the outside—bogging down the entire drying process.

The Dryer Duct Booster® surpasses all existing dryer duct fans with features including:

- The Lint Blitzer blower wheel. Unlike traditional in-line fans which can clog with lint, the Lint Blitzer blower wheel is designed to repel lint while providing optimum velocity
- 5 year warranty and no-clog guarantee
- Save energy by reducing drying times up to 50%
- Easy installation and automatic operation

The Dryer Duct Booster maintains proper exhaust velocities in duct runs up to 100 equivalent feet, optimizing dryer performance.

\* For equivalent feet 90° elbows equal 5 feet and 45° elbows equal 2.5 feet.

Automatic actuation control features self-cleaning dryer duct pressure sensing tube.

Rubber isolated mounting bracket eliminates vibration transfer. Rotates 360° to accommodate any mounting orientation.



PSC, permanently lubricated ball bearing motor is not exposed to heat, lint or moisture. Uses less power than a 50 watt light bulb.

4" long dryer duct connections for easy duct attachment.

See why the Lint Blitzer™ blower wheel has a 5 year no clog guarantee

Go to [www.dryerboosters.com](http://www.dryerboosters.com)

to see for yourself how our Dryer Duct Booster outperforms typical in-line fans in a lint build-up test.



**Specifications:**

Model	Volts	Watts	Amps	CFM
LB1	120	50	0.5	160

## Ventilates excess moisture -- a cause of mold, mildew and wood rot

Helps vent radon, treated wood off-gassing and odors that might otherwise migrate into living areas. UnderAire fans are the only crawl space ventilators with a special "suitable for damp locations" ETL listing.



Tjernlund  
**UnderAire™**  
Crawl Space Ventilators

### Three Models to Select from:



#### Model V1

One fan and small faceplate. Includes freeze protection thermostat. Requires switch or dehumidistat to activate. Multiple ventilators may be controlled by a single switch or dehumidistat.



#### Model V1D

One fan and large faceplate. Includes freeze protection thermostat, dehumidistat and pre-wired 6' power cord.



#### Model V2D

Two fans and large faceplate. Includes freeze protection thermostat, dehumidistat and pre-wired 6' power cord.

### How to determine the number of UnderAire™ Ventilators needed:

Calculate the cubic area of the crawl space by multiplying the length x width x height. Divide this number by 15 to determine the minimum CFM necessary to fully ventilate the space in 15 minutes. Example: 20' long x 40' wide x 3' high crawl space = 2,400 cubic ft. 2400 cubic ft. ÷ 15 minutes = 160 CFM of ventilation. Choose two V1 or V1D ventilators or one V2D ventilator.

### Specifications:

Model	V1	V1D	V2D
Performance	110 CFM	110 CFM	220 CFM
Motor	120/1/60 0.30 amps	120/1/60 0.30 amps	2 @ 120/1/60 0.60 amps
Dehumidistat	Optional Model DH10 dehumidistat available separately	OFF/ON or 20-80% RH	OFF/ON or 20-80% RH
Thermostat	Opens at 40°F	Opens at 40°F	Opens at 40°F
Dimensions	14 3/8" x 6 7/8" x 2"	18" x 9" x 2"	18" x 9" x 2"

## Your best value for boosting air flow in ducts or for powered air intakes and exhausts

- Boost air flow in hard to heat or cool rooms
- Model DB-2 features motor outside of air stream and fits in round or rectangular ducts
- Easy installation in both metal and flex duct (EF-Series only)
- Optional speed and Duct Airstat operating controls (see back page)
- Quiet, smooth operation



### Applications:

- Duct Booster® Fan
- Outdoor Air Supply
- Spot Ventilation
- Bathroom Exhaust
- Warehouse/Pole Barn Exhaust

### The Difference:

- Heavy gauge housing
- Stronger motor than the competition
- Better performance, higher velocity (works against higher pressure drops)
- Higher temperature rating (150°)
- Quieter (lower RPM, same performance)
- Rated for heated & cooled air

### Specifications:

Model	Motor Specifications			Duct Length in Feet				Maximum Air Temp Degrees F
				Free Air CFM	25 Feet CFM	50 Feet CFM	75 Feet CFM	
DB-2, 6" Duct	120V	1/70 HP	.51A	200	150	100	95	200°F
DB-2, 8" Duct				275	250	220	180	
EA-5	120V	30 Watt	.40A	180	150	100	90	150°F
EF-6	120V	30 Watt	.40A	180	150	100	90	150°F
EF-8	120V	56 Watt	1.10A	325	300	250	200	150°F
EF-10	120V	1/100 HP	.60A	475	400	325	275	150°F
EF-12	120V	1/25 HP	1.30A	875	800	700	600	150°F
EF-14	120V	1/15 HP	2.17A	1200	1100	1000	900	150°F

# High Performance In-Line Duct Booster® Fans

Versatile and durable Tjernlund M and P-Series exhaust fans feature high pressure air handling performance with low noise and extremely low power usage.

These fans are ideal for long runs or air supply and exhaust applications requiring exacting performance. All M-Series models come with standard power cord. P-Series models must be hard-wired.



### Applications:

- Duct Booster® Fan
- Outdoor Air Supply
- Spot Ventilation
- Bathroom Exhaust
- Warehouse/Pole Barn Exhaust

Model	Max Amps	Max Watts	Volts	Nom. RPM	CFM 0"	Duct Dia.	Weight
M-4	0.9	100	120	3000	200	4"	9 Lbs
M-6	1.1	125	120	3000	500	6"	14 Lbs
M-8	1.8	210	120	3000	700	8"	16 Lbs

Model	Max Amps	Max Watts	Volts	Nom. RPM	CFM 0"	Duct Dia.	Weight
P-4	.72	80	120	2900	167	4"	5 Lbs
P-6	.77	90	120	2700	243	6"	7 Lbs
P-8	1.10	122	120	2750	408	8"	9 Lbs

## Fresh Air IN-FORCER™

The IN-FORCER mechanically draws outside air indoors on demand to provide fresh air for better indoor air quality. Helps replace air exhausted by kitchen and bath fans.

- Automatic clock/timer accommodates various air change requirements and lifestyles
- Replaces air vented by exhaust fans, fireplaces, etc.
- Reduces moisture, mold and mildew buildup
- Interlocked combustion air models also available

### Specifications:

Model	Volts	RPM	Watts	Max CFM
PAI-1T	120	1600	80	59
PAI-2T	120	1600	80	80



## Accessories



### Duct Airstat Model PS1503

Tjernlund Duct Airstats are used to automatically activate Duct Booster fans by sensing positive pressure in a forced air heating and/or cooling system. The switch is activated by a diaphragm with a factory installed sampling probe inserted directly into the duct or plenum.

### Specifications:

**Electrical Rating:**  
15 Amps non-inductive to 277 Volts AC

**Electrical Switch:**  
SPST, N/O, Snap Action Contacts, Non-adjustable

**Operating Pressure/Position:**  
On pressure rise  $+0.05 \pm .02$ " W.C. (Diaphragm Vertical)

**Maximum Pressure:** 1/2 PSI

**Operating Temperature Range:** -40°F to 190°F



### SC-1 Speed Control

Speed control turns duct fans on and off and can vary motor RPM. SC-1 is compatible with Duct Airstat (model PS1503) and can be used with Duct Booster fan models EA-5, EF-6 and EF-8. (Face plate fits model EF-6 and EF-8 electrical boxes.)

### Tjernlund Also Offers:

- Grilles
- Dampers

See [tjernlund.com](http://tjernlund.com) for more information

Available From:



## TJERNLUND PRODUCTS, INC.

1601 Ninth Street White Bear Lake, MN 55110-6794  
Phone: 651.426.2993 800.255.4208 Fax: 651.426.9547  
Visit our web site: [www.tjernlund.com](http://www.tjernlund.com)