

Art of Airflow™

Design + Efficiency: HVAC Registers for Contemporary Elegance

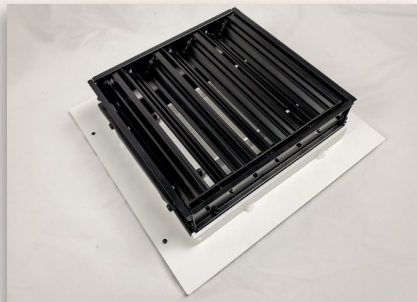
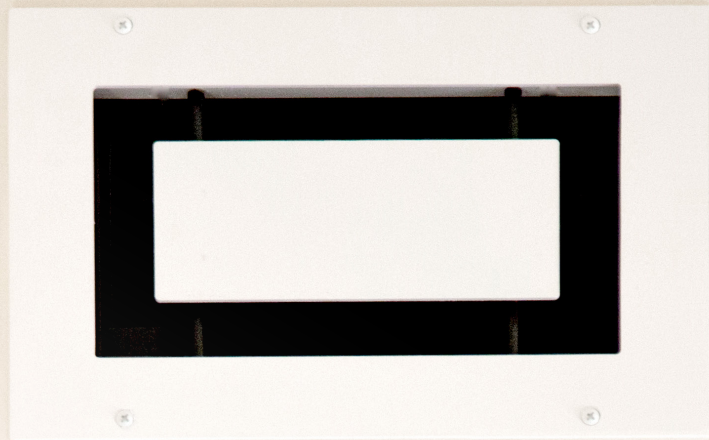
Invision™ Series

Optimized Airflow for Modern Living

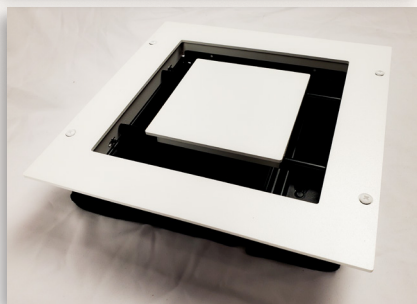
The Invision Series from SteelCrest isn't just about looks—it's about performance.

Unlike similar products, Invision delivers superior airflow, ensuring that contractors install with confidence and homeowners live in comfort.

Designed to complement contemporary styles, Invision is the choice for today's modern builds.



Available in return (non-filtered) or supply (with damper).



Durability You Can Count On

Invision Series stands up to the demands of construction and the expectations of homeowners. From the robust 1/8-inch steel to the precision airflow design, Invision performs as beautifully as it looks.

Modern Sophistication, Straightforward Fit

With sleek lines and a floating centerpiece, this register captures the essence of modern design.

In stainless steel or aluminum with powder coat finishes, Invision enhances the spaces of today and tomorrow.

Guaranteed Quality for Every Home

Built to exacting standards and backed by a limited lifetime warranty, these registers are exclusively designed for sidewall and ceiling applications. It is ideal for builders who value quality and homeowners who appreciate an elevated aesthetic.

Invision™ by SteelCrest — a promise of quality, function, and flair.

To place an order or for custom quotes, please call: 602-437-2900.

View all of our products at steelcrestonline.com

