



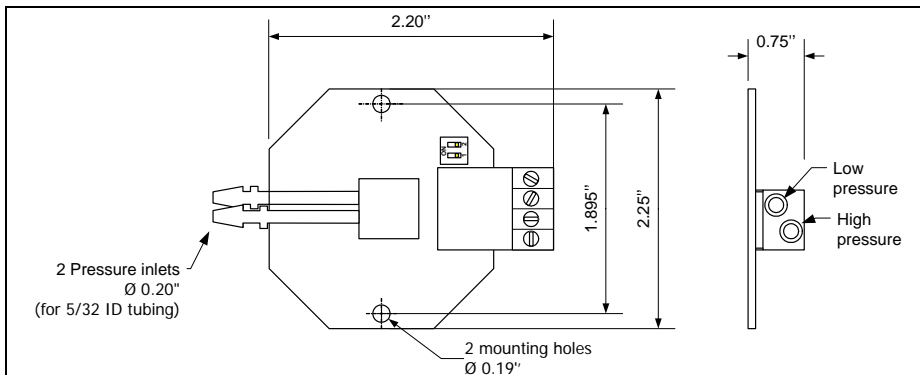
### Features:

- Small footprint
- Simple and easy to install
- Output signal selectable
- High flow impedance in the range of tens to hundreds of kPa

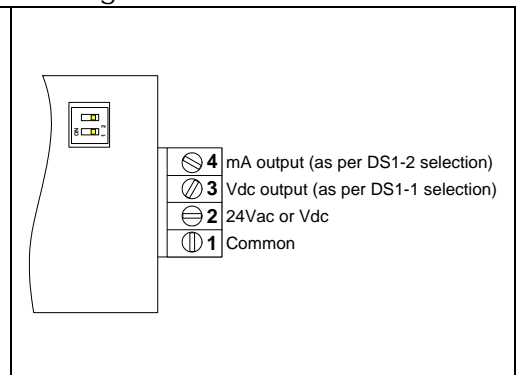
SPD70-010  
SPD70-020  
SPD70-050

Technical Data	SPD70-010	SPD70-020	SPD70-050
<b>Power supply</b>	24 Vac or Vdc $\pm 10\%$		
<b>Power consumption</b>	1 VA		
<b>Electrical connection</b>	18 AWG minimum		
<b>Signal outputs</b>	0-10 or 2-10 Vdc & 4-20 or 0-20 mA selectable with dip switch		
<b>Measurement range</b>	0-1" WC	0-2" WC	0-5" WC
<b>Differential pressure resolution</b>	0.1% of full scale		0.2% of full scale
<b>Pressure non-linearity</b>	Less than $\pm 1.5\%$ of full scale		0-20% full scale = $\pm 2\%$ 20% - 100% full scale = $\pm 5\%$
<b>Total error (not including long term stability)</b>	Max. $\pm 3.0\%$ of full scale (from 5 to 55°C) Max. $\pm 5.0\%$ of full scale (from 0 to 70°C)		0-20% full scale = $\pm 3\%$ (5 à 55°C) 20-100% full scale = $\pm 5\%$ (à 23°C)
<b>Long term stability</b>	Max. $\pm 1.5\%$ of full scale		Max. $\pm 5\%$ of full scale
<b>Burst pressure</b>	Greater than 5 atmospheres		
<b>Sensitivity shift over temperature</b>	Typ. $\pm 1\%$ , Max. $\pm 1.5\%$ (from 0 to 55°C) Typ. $\pm 1.5\%$ , Max. $\pm 2.25\%$ (from 0 to 70°C)		$\pm 15\%$ full scale output (5 à 50°C)
<b>Operating temperature</b>	0°C to 40°C [32°F to 104°F] Compensated: 5°C to 55°C [41°F to 131°F]		
<b>Storage temperature</b>	-40°C to 80°C [-40°F to 176°F]		
<b>Humidity</b>	0 to 85%RH (non condensing)		
<b>Weight</b>	0.22lb [101g]		

### Dimensions



### Wiring



### Dipswitch setting

<p>DS1 at OFF position</p>	<p>DS1 at ON position</p>
----------------------------	---------------------------

### Recycling at end of life

At end of life, please return the sensor to your Neptronic® local distributor for recycling. If you need to find the nearest Neptronic® authorized distributor, please consult [www.neptronic.com](http://www.neptronic.com).