



Project Name:

# IN / ON Wall Dehumidifier with Bi-Polar Ion Generator

## Model - IW25-5

### Specifications

Base Unit.....	27.625" (27 5/8") x 14.25" (14 1/4") x 5.75" (5 3/4")
IN Wall Rough Opening.....	28" x 14.5" (14 1/2") x 5.75" (5 3/4")
Base Unit & IN Wall Cover.....	30.375"(30 3/8")x17.25"(17 1/4")x7.25"(7 1/4")
Base Unit & ON Wall Cover.....	27.625"(27 5/8")x14.25"(14 1/4")x7.25"(7 1/4")
Weight.....	39 lbs
Second Pressure Level (at 3 MTS in Free Field).....	47 dBA
Drain Connection.....	10', 3/4" O.D.
Refrigerant R32.....	155G

### Operation Performance

	(@80°F/60% RH)	(65°F/60% RH)
Water Removal.....	33PPD	21PPD
Energy Factor.....	1.92 L/kWh	1.65 L/kWh
Air Flow (with Clean Air Filter).....	120 CFM	
Operating Temperature Range.....	46-95°F	
Functioning Relative Humidity Range.....	36-90% R.H.	
Sizing.....	up to 1,500 sq. ft.	
Test Condition.....	20 Cm (from Ionizer); Wind Speed 1m/s	
Ion Type.....	Positive and Negative Ions	
Ion Output.....	3,000,000/ cc	

### Power & Electrical

Rated Average Power Consumption (@ 80°F/60% RH).....	300 Watts
Max Power consumption (@ 90°F/ 95% RH).....	440 Watts
Max Absorbed Current (@ 80°F/60% RH) F.L.A.....	2.8 Amps
Locked Rotor Current L.R.A.....	14 Amps
Defrosting Control System.....	Electrical
Input Voltage.....	DC 24. OV±0. 1V
Supply Voltage.....	120 VAC-60Hz
Power Cord.....	8', Ground or Hardwired

### Shipping

Shipping Dimensions.....	17.12"W x 30.55"D x 8.46"H
Shipping Weight.....	48 lbs
Pallet Quantity.....	20 Per Pallet
Shipping Options.....	UPS or LTL

ASHREA standard- @80°F/60% RH

Energy Star Standard- @65°F/60% RH

Specifications subject to change without notice

\* Layout and moisture conditions vary in every apartment and home; in typical conditions, the IW-25 can maintain the RH of 59% or less but is not guaranteed.

Moisture removal will vary in relation to unit's power, temperature, and relative humidity. Amp draw varies at different climate conditions.

\*\* dBA is tested in a controlled environment; levels may vary due to install and install location.

\*\*\* Does not apply to subterranean spaces.

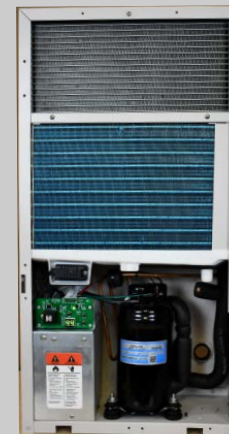
### Quiet | Sleek | Tankless

The IW25-5 Wall Dehumidifier is the solution to lowering relative humidity and removing excess moisture in apartments, hotels, basements, student housing, and other properties where dehumidification is needed.

The built-in dehumidifier's versatility allows for easy installation in any application. The unit recesses inside a 2 x6 interior wall, fits through a 2 x4 interior wall, or hangs directly on the wall.



In Wall Cover



Base Unit



ON Wall Cover

### Features

- Washable MERV Air Filter
- Automatic Restart
- Integral Humidity Sensor
- LED Maintenance Reminder Light
- Drain into hub-drain or existing plumbing
- 110v Outlet or Hardwire

### Accessories

- Exterior Sleeve - partial recesses install
- Internal Condensate Pump



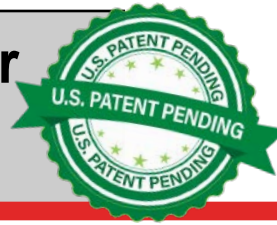
HumidityHappens.com

6260 Ocean Hwy West  
Ocean Isle Beach, NC 28469

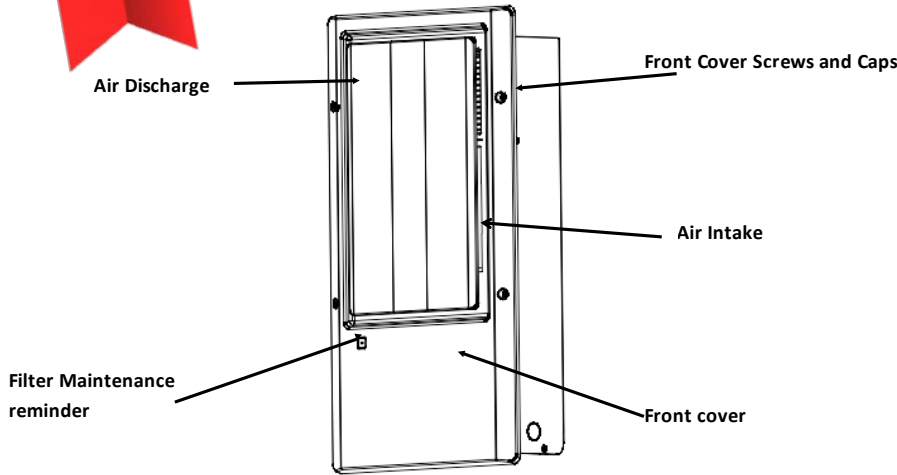
(910) 579-3348



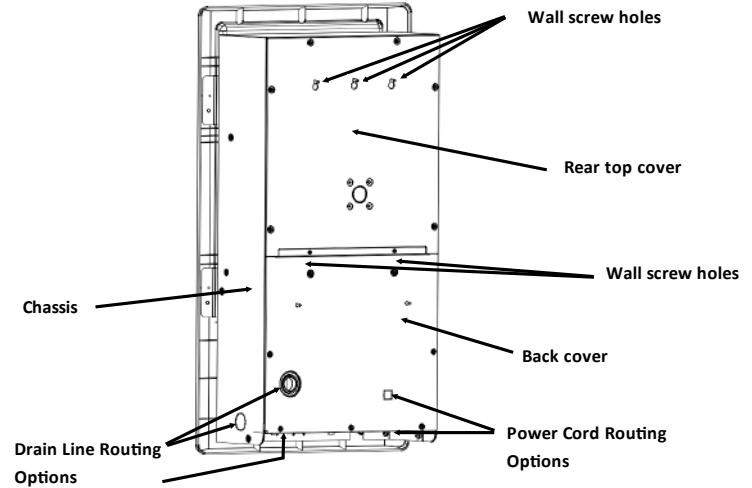
# IW25-5 IN / ON Wall Dehumidifier with Bi-Polar Ion Generator



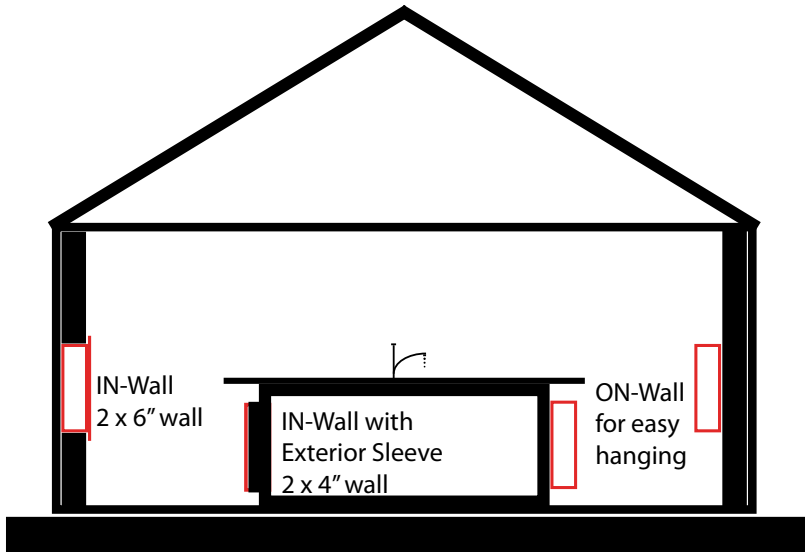
Front View



Back View

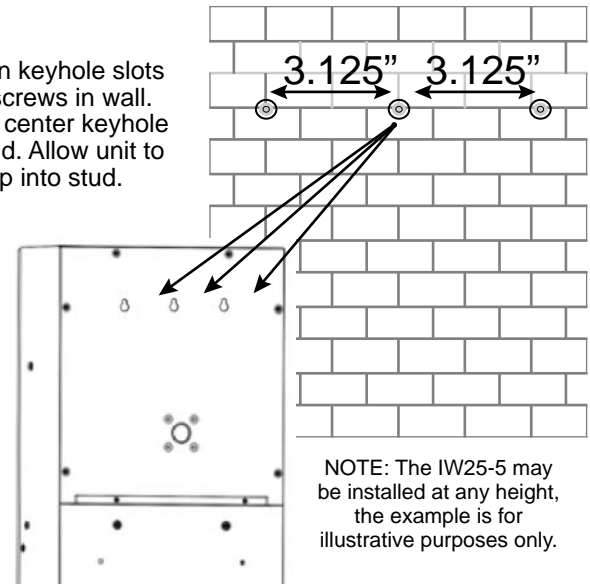


## Example of Dehumidifier Placement



## Hanging the unit on the wall

Position keyhole slots over screws in wall. Ensure center keyhole hits stud. Allow unit to drop into stud.



NOTE: The IW25-5 may be installed at any height, the example is for illustrative purposes only.

## IW25-5 Optional Accessories:

### Integrated Condensate Pump Built for IW25-5



The Integrated Condensate Pump was designed for automatic collection and removal of condensate when gravity drainage is not possible or practical. Pump mounts directly into dehumidifier for tamper-proof control.

Dimensions: 7 1/8" x 3" x 2 3/4"

### Exterior Sleeve for IN Wall Dehumidifier



The Exterior Sleeve allows the IW25-5 IN Wall Dehumidifier to be semi-recessed into the wall. Includes punch out holes on side and bottom for versatile drain and power routing. The Exterior Sleeve frames the dehumidifier for a clean fit.

Dimensions: 17 1/2" x 30 1/2" x 2 1/5"

The IW25-5 Dehumidifier utilizes its integral humidistat to monitor the environmental conditions. When the relative humidity goes above the selected set point, the dehumidifier will energize. Air is drawn across an evaporator coil, which is cooler than the dew point of air. This means moisture will condense out of the air. The air is then reheated through the condenser coil and distributed back into the room. The IN Wall dehumidifier is designed for recessed wall mounting. For semi-recessed applications an IDS Exterior Sleeve (sold separately) shall be used. The ON Wall dehumidifier is designed for direct surface wall mounting on surfaces including drywall, cmu block, masonry, concrete, stucco, etc.



For Complete Installation Instructions Visit: [HumidityHappens.com](http://HumidityHappens.com)

(910) 579-3348 | [info@innovatedehu.com](mailto:info@innovatedehu.com)