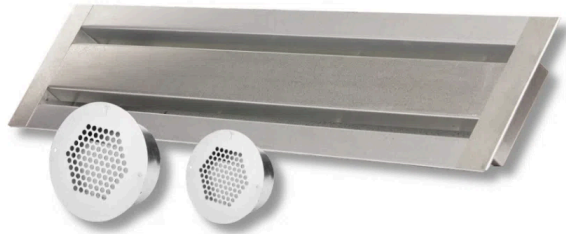




## **BRANDGUARD'S PATENTED TRIPLE PROTECTION**



- 🔥 **OVERLAPPING BAFFLES** TO KEEP OUT EMBERS, RODENTS, BIRDS, INSECTS, DRIVING RAIN AND SNOW
- 🔥 **INTUMESCENT QUICK EXPANDING STRIPS** TO SEAL OFF THE VENTS IN CASE OF EXTREME FLAMES AND HEAT
- 🔥 **1/16" FINE MESH** ON THE BACK SIDE OF THE VENTS

### **OVERLAPPING BAFFLES**

Brandguard's baffle design features an overlapping technique to allows air to move freely, but trap embers in the event of a wildfire.

### **INTUMESCENT STRIPS**

Brandguard propriety intumescent material, which expand only if high heat and extreme flames are reaching the vents.

### **1/16" FINE MESH**

Brandguard's non combustible metal vents are high-quality and resist heat and flames. They hold 1/16" of fine mesh on the back side of the vents.

**These three combined technologies, help protecting your home, in case of a wildfire, increasing the survivability ratio of the structures.**



**TENMAT'S INTUMESCENT  
TECHNOLOGY EARNED THE  
"INNOVATION" AWARD AT THE  
QUEEN'S AWARDS FOR  
TECHNOLOGY IN 2019**



## **NOT ALL INTUMESCENTS ARE THE SAME...**

An intumescent is a substance that swells as a result of heat exposure, thus sealing off the open cavity. We manufacture intumescent materials in-house which means they are unique to us.

-Intercalated Graphite is used as the active element.

-Rock Mineral Fibres are used as scaffolding/matrix structures and

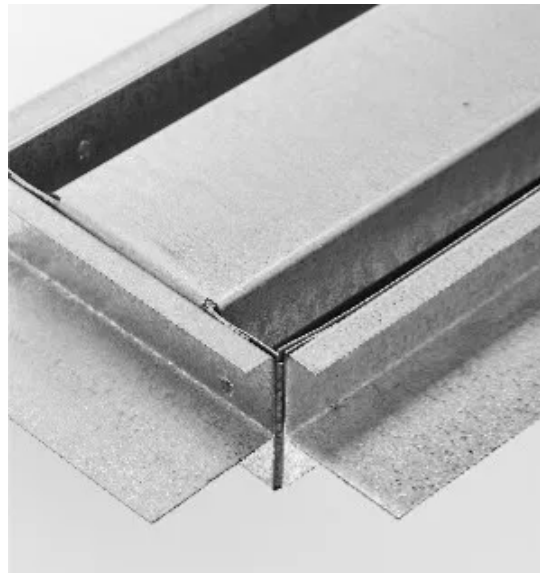
-Our strips feature high temp & organic binders.

Our intumescent formula offers market leading fire protection solutions. Used globally in Military Defense products, we have a reputation for protection that is unsurpassed

**MORE ON OUR INTUMESCENTS**  
**(<https://www.brandguardvents.com/intumescent-technology-info/>)**

# **NEW CONSTRUCTION AND RETROFIT FLANGES**

NEW CONSTRUCTION and RETROFIT flanges : PG (plaster ground, stucco), H (cement board), EB (ears back), EF (ears front), and FB (flange back), FF (nail flange front).



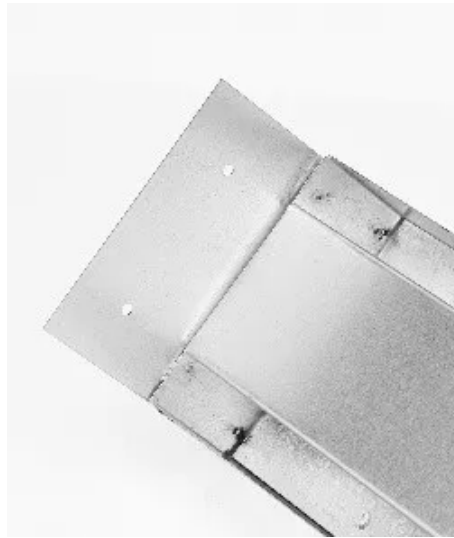
STUCCO, PLASTER GROUND (PG)



**HARDIE FLANGE (H)**



**EARS BACK (EB)**



**EARS FRONT (EF)**



**NAIL FLANGE FRONT (FF)**