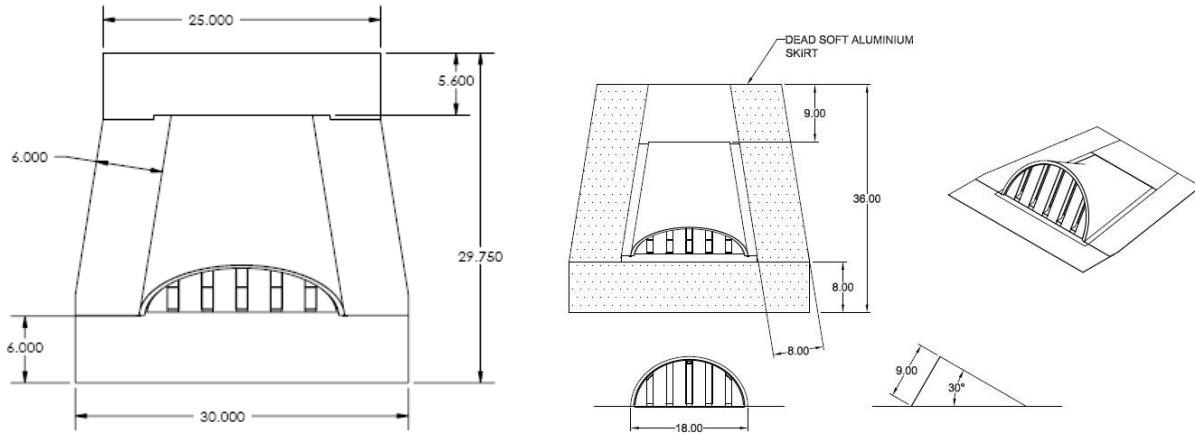




## DORMER VENTS MODEL # DV2011 AND DV2031



Under Eave/Soffit Vents	Model	Size W x H	NFVA Provided	Flanges Available	Flange Definition	Weight
	DV2011	9" x 18"	56	Standard	As Shown	7lbs
	DV2031	9" x 18"	56	Soft Aluminum	For "s" tiles	7lbs
CUSTOM SIZES and materials AVAILABLE						

### BENEFITS:

- Safety vents that are used in areas prone to wildfires, wind driven rain, or winddriven snow.
- Overlapping Baffle Protection (Patented)
  - Air Flows through normally
  - Resists the intrusion of Flame and Embers, Wind Driven Rain and Wind Driven Snow
- WUI Compliant and with California Ch7a Building Code
- Anti -Clogging Overlapping Baffles plus 1/8" mesh on back side of vent
- Passed Miami Dade Driving Rain Test @ 140mph with no rain penetration
- Prevents Rodent Entry
- 20 Year FULL Warranty
- Easy to Install, Retrofit and Paint

### STANDARD MATERIALS

1/8" mesh on back side of Overlapping baffles

ASTM A653/A653M- G90 hot dipped galvanized steel, 26GA

ASTM D9092- mill phosphatized coating for painting. IF BONDERIZED ASTM b370- Sheet Copper, 16oz and 20oz IF GALVANIZED

.025 x.025 hot dipped galvanized 23ga wire mesh

### Installation:

Install like any other similar Ventilator Product on the market.