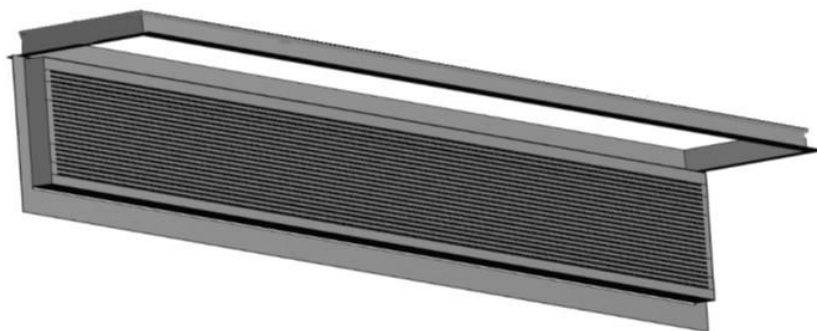


## 4" x 60" Balcony Inspection Vent Model # CS2011-FF-Removable

4" Wide opening frame with 3.5" removable vent



1" Deep

\*Vent shown in open position, Close vent with appropriate fasteners (min. 3) along the front nail flange

Model	Opening Size	Actual Vent Size	NFVA Provided	Flanges Available	Flange Definition	Weight
CS2011-FF-Removable	4" x 60"	3.5" x 59.5"	59 Sq In	Flange Front	Flange Front	4 lbs
Custom sizes/materials AVAILABLE						

### BENEFITS:

- Easy Hinged Inspection Access to comply with **SB721 & SB326**
- Overlapping Baffle Protection (Patent Pending)
  - Air Flows through normally to help prevent rot
  - Resists the intrusion of Flames, Embers, Radiant Heat
- ASTM E119 1-HOUR FIRE RATED
- Ch 7A WUI Fire/**ASTM E2886** Approved California **BML Listing # 8165-2232:0502**
- **TRIPLE PROTECTION:** Anti -Clogging Overlapping Baffles, 1- hour fire rated Intumescent strips, plus 1/16" mesh on back side of vent.
- Prevents Rodent Entry
- 30 Year Warranty
- Easy to Install and Paint, also available in Stainless Steel

### STANDARD MATERIALS

1/16" mesh standard unless otherwise requested

Astm A653/A653M- G90 hot dipped galvanized steel, 26 GA

Intumescent adhesive strips(1-2 hr fire rated) installed on internal baffles to provide extreme radiant heat/flame protection

ASTM D9092- mill phosphatized coating for painting.- If bonderized

ASTM b370- Sheet Copper, 16oz and 20oz- if copper

**Installation:** Installed into pre-cut Opening of 4.25"w x 60.25"l. Attaches onto the Exterior material joists on the underside of the balcony, deck or walkway as needed to comply with local building codes.