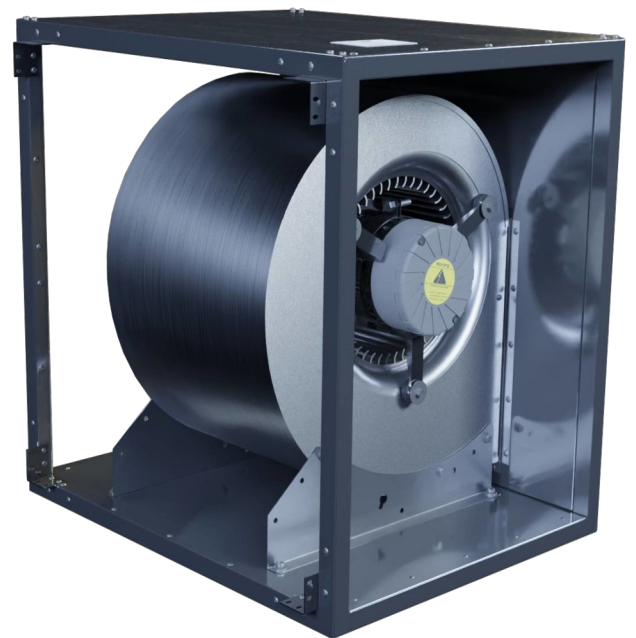
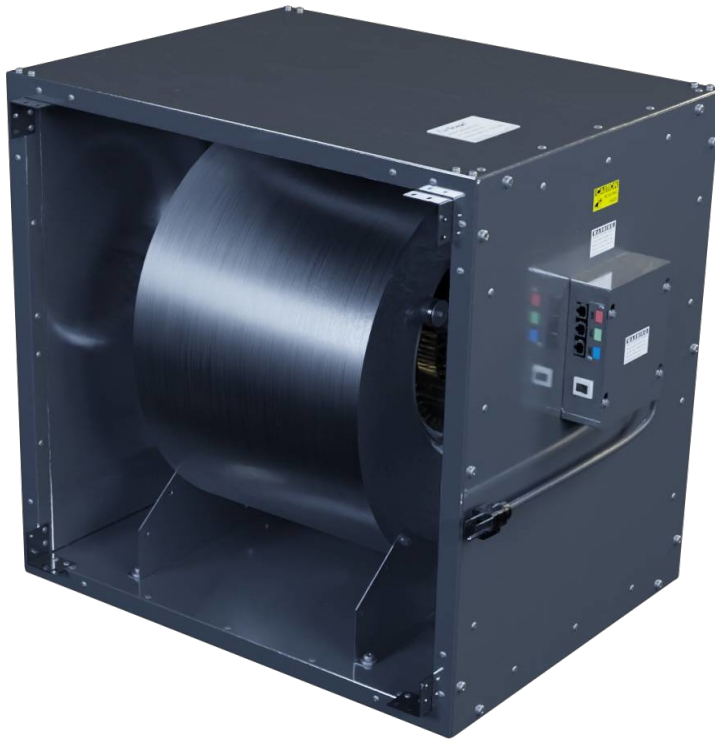


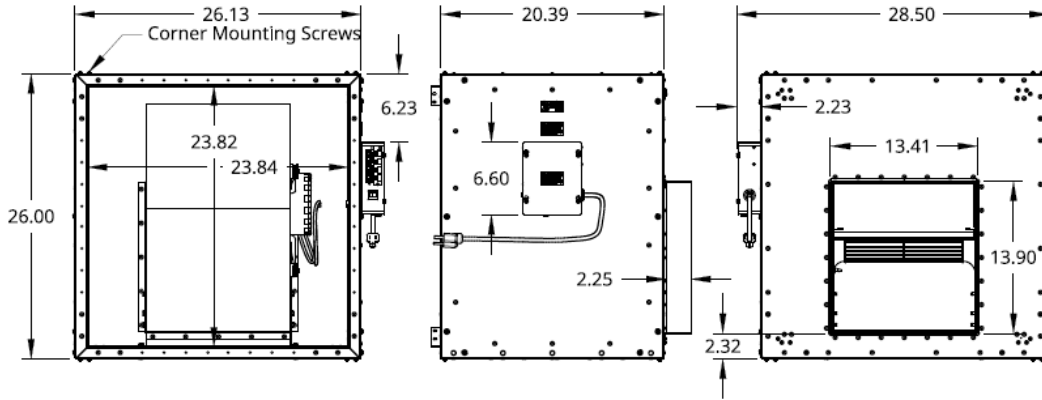
AH4-Cabinet Fan Module**Features:**

- The AH4 Cabinet Fan Module is part of a series of modules that can be combined to form a custom multi-functional Air-Handler.
- This Modular approach allows for an adaptive installation as each module can be rotated, minimizing installation cost by adapting to installation needs.
- The AH4-CF is double wall constructed Aluminum, making it light (72 **lbs**) yet strong and includes corner mounting screws.
- The Fan Assembly is Fiber Glass insulated (R4).
- The AH4-Cabinet Fan Module has an efficient yet powerful ECMotor with a 20 foot power cord*
- Depending on the custom CF Module ordered it comes with a 10
- speed controller or a make-up air controller.
- Screw-on Access Panel on two sides of the unit.
- Round and Square Custom Intake and Exhaust Duct adapters are available**;

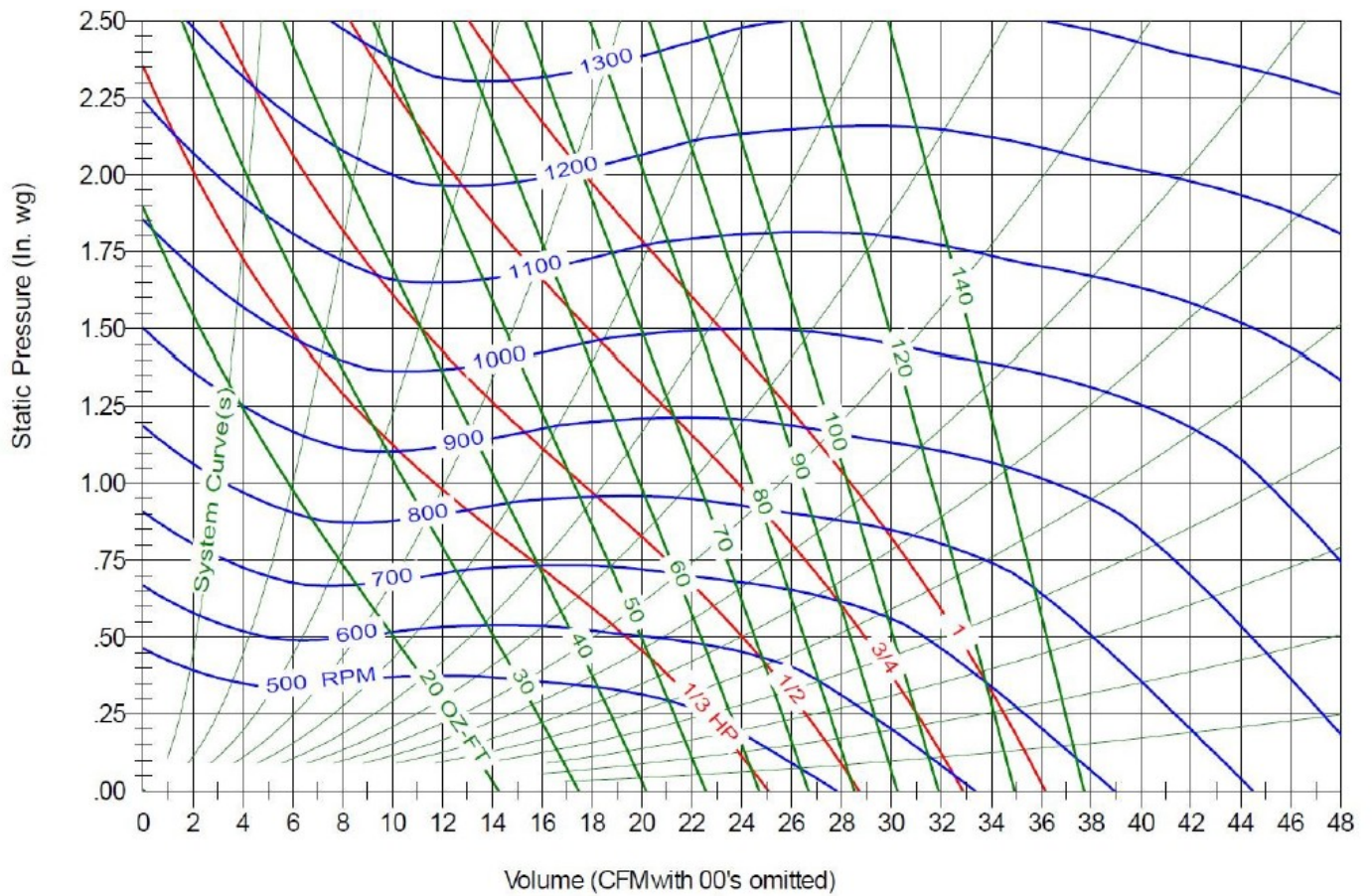
Call HVACQuick.com @ 888-855-7229 or team@hvacquick.com.



AH4-Cabinet Fan Module



FAN CURVE (fan only):



| Motor | Max RPM | Power VAC | Watts | Hz | Phase | CFM @ 0.001" W.C. | CFM @ 0.6" W.C. | CFM @ 0.8" W.C. | CFM @ 1.0" W.C. | CFM @ 1.2" W.C. | MAX CFM @ MAX Pressure Drop (max rpm) |
|--------|---------|-----------|--------|-------|-------|-------------------|-----------------|-----------------|-----------------|-----------------|---------------------------------------|
| 1/2 HP | 1050 | 115/230 | 25-500 | 50/60 | 1 | 2850 | 2325 | 2050 | 1975 | 1450 | 1100 @ 1.5" W.C. |
| 1 HP | 1050 | 115/230 | 40-750 | 50/60 | 1 | 3600 | 3200 | 3025 | 2825 | 2625 | 2150 @ 1.62" W.C. |

Units are in inches, CFM is from the curve chart and is approximate.

* Can be Changed to 220VAC with a simple field conversion, Motor is capable of 60hz as well.

** The Adapters with a 20" duct (round or square-height) protrudes 0.75 BELOW the fan case bottom.