



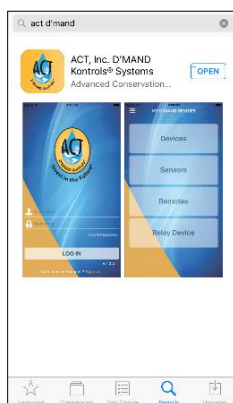
Bluetooth Instructions Ver. 1

iPhone/Android

The ACT Inc. App allows you to sync, manage, and control several ACT Inc. Bluetooth wireless devices. It is critical that you do not work ahead and to execute all the instructions in an expedited manner. In some cases, it may require the user to repeat a step(s) to ensure success. **Let's get started!**

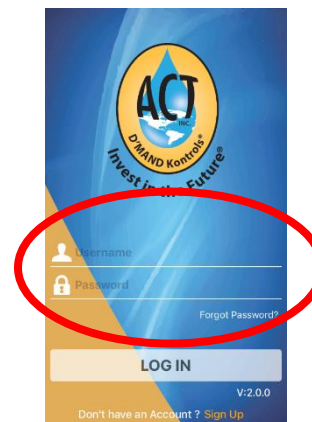
How to Download the ACT Inc., D'MAND Kontrols® Systems App

1. Open the App store or Play store (see below).
2. Search by entering: *ACT Inc. D'MAND Kontrols® Systems.*
3. Download the App for free.



Launch the ACT D'MAND Kontrols® App by tapping the application icon. You will see a login / sign up screen.

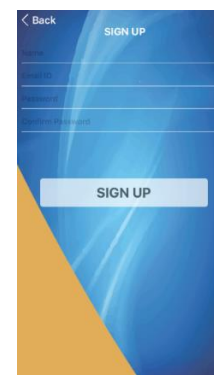
How to Set Up Your Bluetooth Kontrols®



Option 1: If your wireless kit came with a username and password you can enter it here.

Option 2: If you do not have a user name or password, *NO PROBLEM!* We can easily create a new account by clicking on the "Sign Up" button on the bottom right of the page.

Sign up is simple. Enter a user name (no spaces), valid email address, and Password. The Password needs to contain letters, special characters and numbers. Minimum of 6 characters (I.e. *a@1234*). Once entered, click "SIGN UP".



How to Start Managing Your Devices

To add or program your new Bluetooth devices you will need to cycle power, this will start the programming mode. You will need to unplug and plug the controller one time for the receiver, and relay devices. Wireless Transmitters and Motion Sensors will require the batteries to be installed, so let's get started!

Open up the Transmitters and Sensors, unplug the D'MAND System from the wall and then wire the Receiver to the controller. Please follow the color codes, **Green to Green**, **Red to Red**, and **Black to Black**. Do not plug it in to the power source yet!

Adding a Receiver/Hub

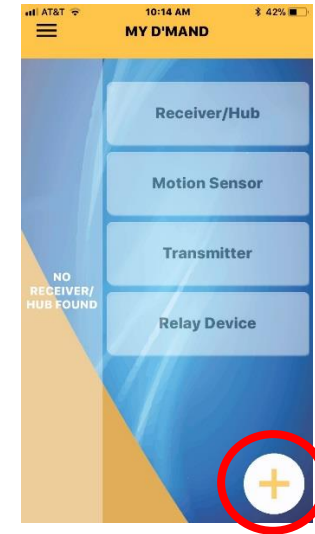
1. Lay out all the parts in your new Bluetooth Kit (batteries uninstalled).
2. Wire the color coded wires together.



3. Plug in power for the controller.




4. Go to the phone App and tap the "+" add symbol on the bottom right of screen.



5. Follow the screen instructions, and make sure you have power to the Receiver.

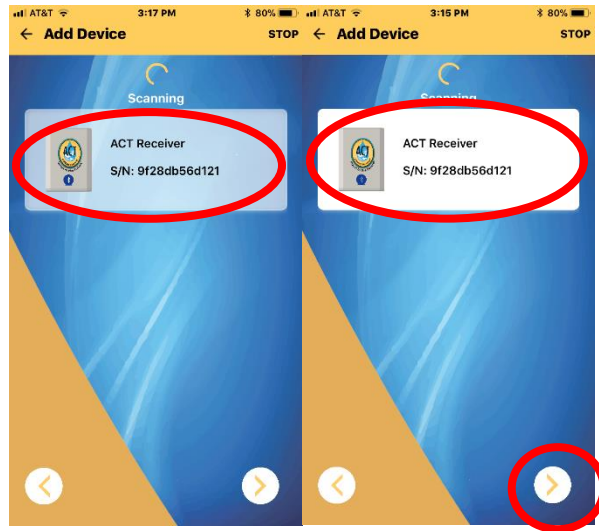
NOTE: You have approx. 30 seconds to complete the Receiver pairing, so do not hesitate.

Then press the  button.

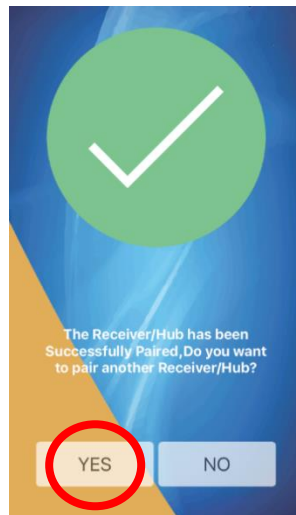


6. Tap the Receiver tab, the background will turn solid white after it is selected.

6a. Then tap the ">" next arrow on the bottom right of the screen.

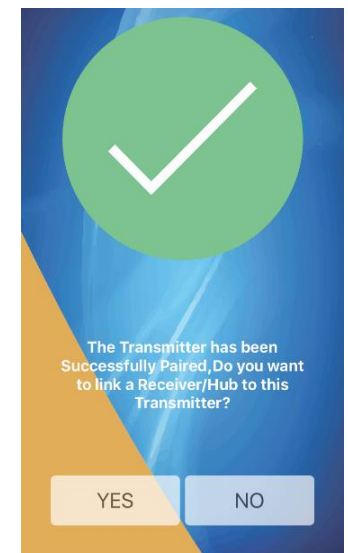


7. Tap "YES", this will then take you back to Step 5 above to pair the first Transmitter.

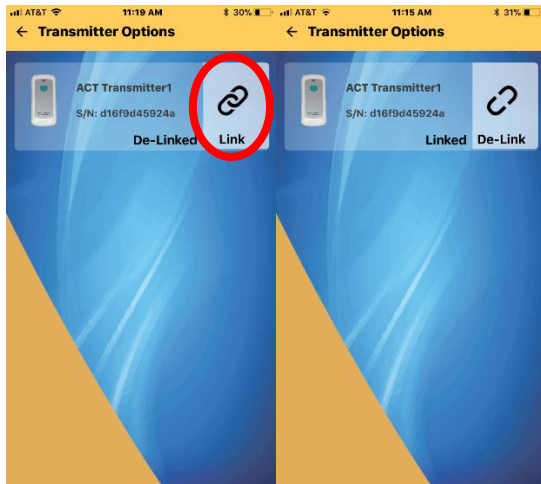


Note: If at any point the phone App does not find the device you can restart the process until it does. Just make sure to interrupt power before your next attempt.

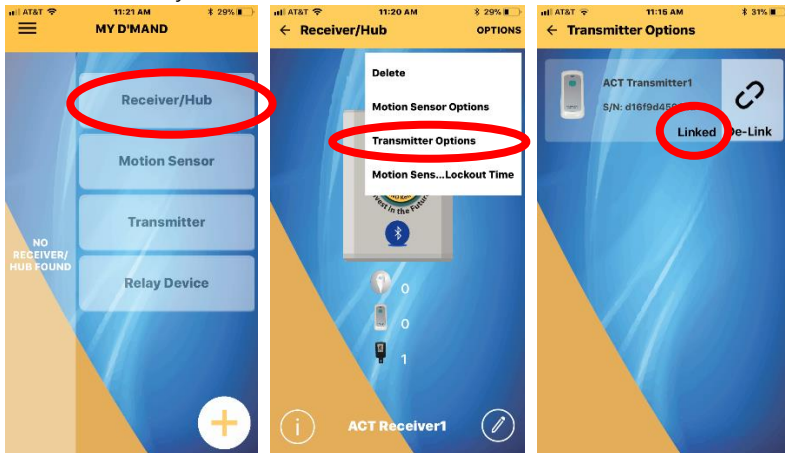
8. When pairing a Transmitter, depress the button and then insert the battery. If you are pairing a Motion Sensor, insert the battery then place it face down. If you are pairing a Repeater then just plug it in.



9. Once confirmed you can now link the Receiver to the Transmitter by hitting the link button which will then show that the system is now linked together. You may also de-link the devices on this screen as well. Once the devices are linked you can then hit "Back" and return to the main menu.



10. From the main menu you can check the status of all of your devices. To verify the pairing, tap the "Receiver/Hub" button, then tap the "Transmitter Options" button. This will show you the Transmitters linked to your Receiver. Make sure all of the Transmitter(s) are shown on this screen and that they all are "Linked" as shown below.

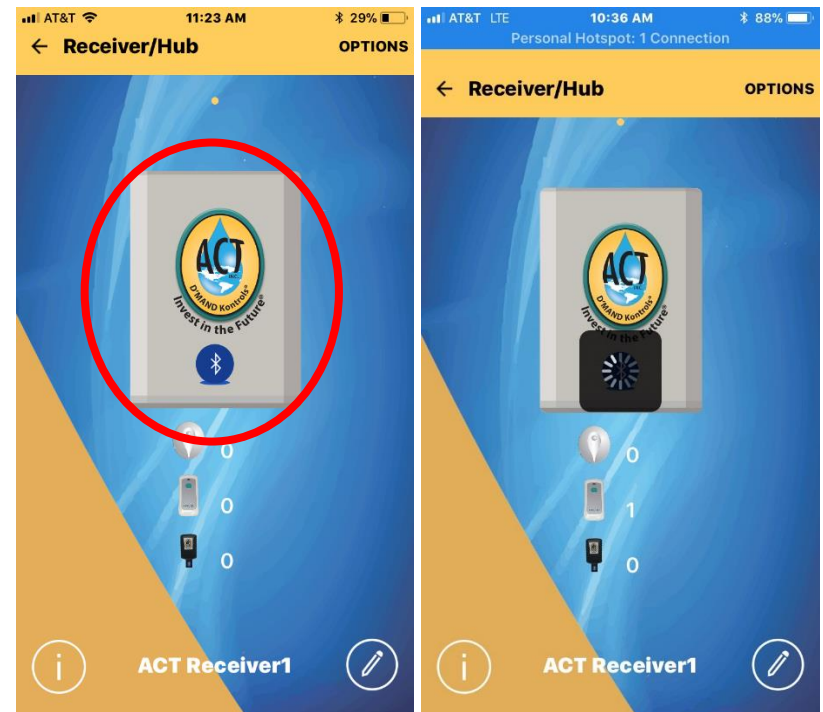


11. You can add up to 15 devices, these can be any mix of Transmitters, Motion Sensors or Repeaters, just repeat steps 8-10.

12. You are now ready to use your new Bluetooth Wireless Kit!

Continued Activation

You can now activate your ACT D'MAND Kontrols® System by pressing any of the linked Transmitters. You can also activate your system using any smart phone or tablet by entering your user name and password. To use a phone or tablet simply go to the main screen, and tap Receiver/Hub. Once tapped, the pump will activate.



Please consult your ACT Inc. D'MAND instructions with any questions on the pump operation, other remote devices or activators.

Contact us at: ACT Inc. D'MAND® Systems, 3176 Pullman Street, Suite 119, Costa Mesa, CA 92626

Phone: (714) 668-1200 or (800) 200-1956, or Fax: 714-668-1927

Please refer to our website at www.gothotwater.com for warranty and indemnification information.