



Accessories



S&P Residential/Light Commercial Product Line

The World's Leading Producer of Air Movement Products



ASHRAE 62.2 Accessories for TD Fans

CVC - Continuous Ventilation Control



S&P's CVC allow a new or existing bath fan to run continuously on a low speed. In conjunction with an S&P TD fan a CVC will immediately improve the air quality in the home and reduce the damaging effects of moisture and mold.

The CVCs are designed to meet the requirements of ASHRAE 62.2 and the International Residential Code. In areas where ASHRAE 62.2 is not a requirement the CVC is still an economical choice to improve indoor air quality.

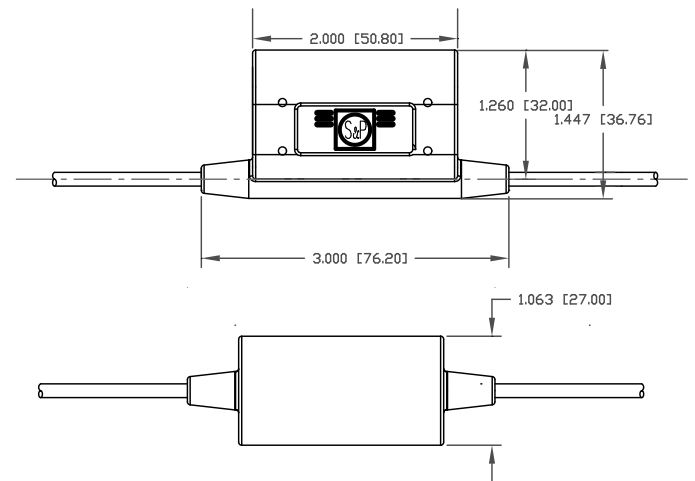
CVC Model	TD Fan Size	Application	Max. Flow	Continuous Flow @ .25"SP
CVC-100	100	Single Inlet	101 CFM	20 CFM
CVC-100x	100x	Single Inlet	135 CFM	20 CFM
CVC-150	150	Single Inlet	218 CFM	20 CFM
		Dual Inlet	293 CFM	40 CFM



Features

- Reduces remodeling costs, helps meet ASHRAE 62.2 requirements
- Perfect for homes, apartments, dorms, hotels and elderly housing
- Economical and easy to install in your existing wall box
- Works with most fan controls, i.e. motion sensors, timers, speed controllers.
- Improves the indoor air quality in your home
- Undetectable, efficient and effective
- Operates with any standard switch
- No programming required
- 120V, 60 Hz, 3A Maximum

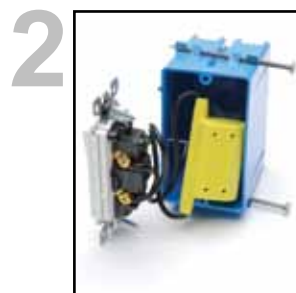
Dimensions in Inches (mm)



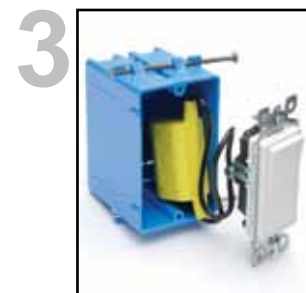
Easy Installation. . .



1 Attaches to any standard wall switch.



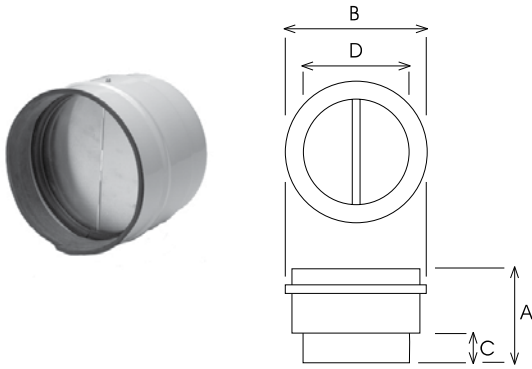
2 Simple 2 wire connection across the wall switch and fits into most standard wall/ junction boxes.



3 Completely installed in minutes!

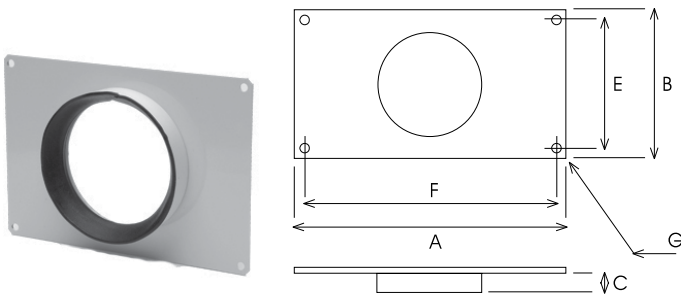
TD Exclusive Accessories

TD Twin Direct Connection Backdraft Shutters



Model	A	B	C	D
MCA-100	4 ^{3/16} 107	4 ^{3/8} 111	1 ^{1/4} 31	3 ^{11/16} 94
MCA-125	4 ^{3/16} 107	5 ^{3/8} 136	1 ^{1/4} 31	4 ^{11/16} 119
MCA-150	4 ^{3/4} 121	6 ^{7/16} 163	1 ^{3/8} 35	5 ^{13/16} 147
MCA-200	5 ^{3/16} 131	8 ^{7/16} 214	1 ^{3/8} 35	7 ^{3/4} 197
MCA-250	6 ^{3/16} 164	10 ^{3/8} 264	1 ^{5/8} 42	9 ^{3/4} 248
MCA-315	8 ^{1/16} 205	13 330	1 ^{15/16} 50	12 ^{5/16} 312

TD Fan Circular to Rectangular Flange



Model	A	B	C	E	F	G
MAR-100	10 ^{3/8} 264	7 ^{1/16} 180	1 ^{5/16} 33	6 ^{5/16} 160	9 ^{5/8} 244	^{3/8} 9
MAR-125	10 ^{3/8} 264	7 ^{1/16} 180	1 ^{5/16} 33	6 ^{5/16} 160	9 ^{5/8} 244	^{3/8} 9
MAR-150	12 ^{5/8} 320	8 ^{11/16} 220	1 ^{7/16} 37	7 ^{7/8} 200	11 ^{13/16} 300	^{3/8} 9
MAR-200	14 355	9 ^{7/16} 240	1 ^{7/16} 37	8 ^{11/16} 220	13 ^{3/16} 335	^{3/8} 9
MAR-250	17 ^{5/16} 440	11 ^{7/16} 290	1 ^{5/8} 42	10 ^{5/8} 270	16 ^{9/16} 420	^{3/8} 9
MAR-315	21 ^{1/4} 540	14 355	2 ^{1/16} 52	14 355	20 ^{1/2} 520	^{3/8} 9

TD Circular Fan/Duct Connectors



Part #	Description
MBR-125	5" TD circular fan duct connector
MBR-150	6" TD circular fan duct connector
MBR-200	8" TD circular fan duct connector
MBR-250	10" TD circular fan duct connector

S&P Fans with Timer Control - ASHRAE 62.2



FT622 - ASHRAE 62.2 Bath Fan Ventilation Control

The FT622 is designed to replace bathroom fan and light switches and provide both functions with one easy operation. By using a microprocessor to monitor and control operation, the FT622 delivers a precise amount of ventilation, and is a simple solution to meet ASHRAE 62.2 in conjunction with an S&P fan, specifically a TD-MIXVENT or PC Premium Choice Fan.

There are only two settings on the FT622: VENTILATION and DELAY. The VENTILATION setting allows the user to set the number of minutes per hour the fan should run. The DELAY setting allows the user to set the number of minutes the fan should run after the bathroom light has been turned off. The DELAY setting provides additional run time for the fan to complete the remaining necessary ventilation after use.

How to Set the FT622 Run Time Requirements to meet ASHRAE 62.2

- Using the CFM requirement chart for ASHRAE 62.2 below determine the necessary ventilation rate.
- Divide the required ventilation air by the tested air flow rate of the installed fan.
- For example, a three bedroom, 2500 square foot home requires 60 CFM of ventilation air.
- A TD-100x fan is rated to provide 90 CFM. $60/90=.66$
- To determine the number of minutes the fan needs to run per hour multiply $.66 \times 60 = 39.6$
- This means the FT622 needs to be set to run for 40 minutes per hour.
- Any manual fan operation and DELAY operation will be subtracted from the pre-set VENTILATION time for that hour. If manual fan operation and DELAY operation exceed pre-set VENTILATION time, the excess time will be subtracted from the next hour's total VENTILATION time.

ASHRAE 62.2 Standard chart

Floor Area (ft ²)	Bedrooms				
	0-1	2-3	4-5	6-7	>7
<1500	30	45	60	75	90
1501-3000	45	60	75	90	105
3001-4500	60	75	90	105	120
4501-6000	75	90	105	120	135
6001-7500	90	105	120	135	150
>7500	105	120	135	150	165

S&P Fans with Timer Control - ASHRAE 62.2 Cont.



FT247 - Programmable Fan Timer

S&P offers the FT247 with easy programming for your bathroom fan ventilation needs. Simply set what time you want the fan to turn on and off and what day or days you want the fan to run. S&P recommends using the FT247 with a TD-MIVENT Fan or PC Premium Choice Fan

- Provides 7 ON and 7 OFF events per day
- LCD display
- Rechargeable battery back-up
- Push button activation
- **Note:** Do not use with fluorescent lamp ballasts

How to set the FT247 Run Time Requirements to meet ASHRAE 62.2

- Using the CFM requirement chart for ASHRAE 62.2 below determine the necessary ventilation rate.
- Divide the required ventilation air by the tested air flow rate of the installed fan to determine the amount of run time required in an hour.
- For example, a 3200 square foot 3 bedroom home requires 75 CFM of ventilation air and a TD-150 fan is rated to provide 150 CFM, so $75/150 = .5$ hour
- Now multiple that number by 24 hours to determine how many hours a day the fan should run at full speed.
- $(.5 \text{ hour}) \times (24 \text{ hours}) = 12 \text{ Hours per day of operation.}$

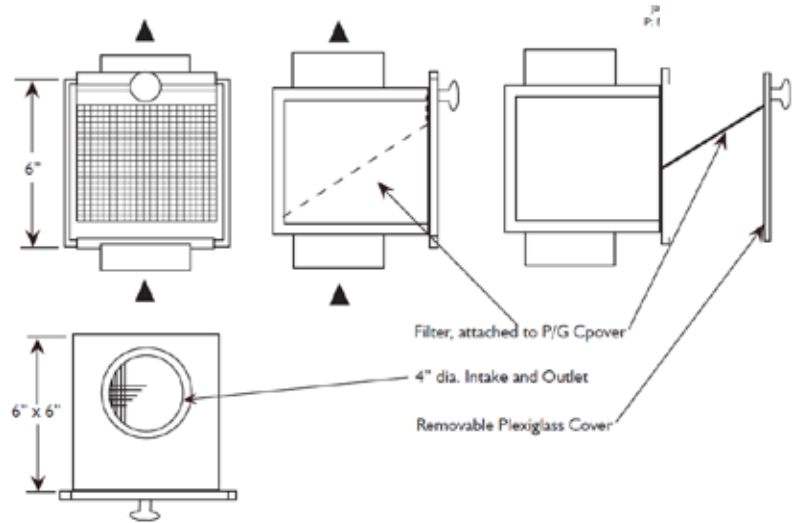
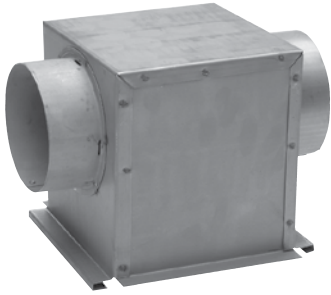
You now know the fan needs to run 12 hours per day but it is up to the installer to decide when the fan is active. S&P suggests the fan run 6 hours in the morning and 6 hours in the evening, times when the bathroom is used most. So 4 am to 10 am and 5 pm to 11 pm would be a great way to exchange air during high activity times. The FT247 can set up to 7 on and off events per day, so there are multiple options for setting the fan to run.

ASHRAE 62.2 Standard chart

Floor Area (ft ²)	Bedrooms				
	0-1	2-3	4-5	6-7	>7
<1500	30	45	60	75	90
1501-3000	45	60	75	90	105
3001-4500	60	75	90	105	120
4501-6000	75	90	105	120	135
6001-7500	90	105	120	135	150
>7500	105	120	135	150	165

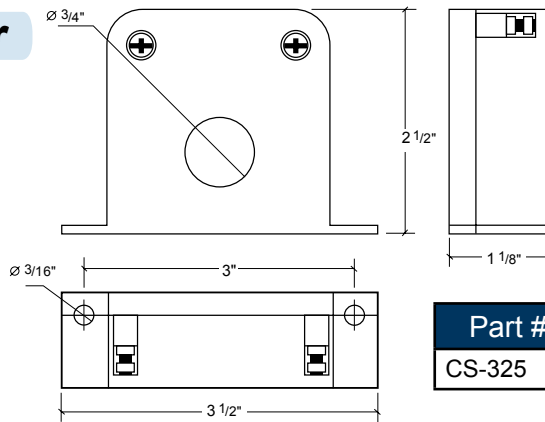
Dryer Booster Accessories

Lint Trap



Part #	Description
LT-100	Lint Trap

Current Sensor



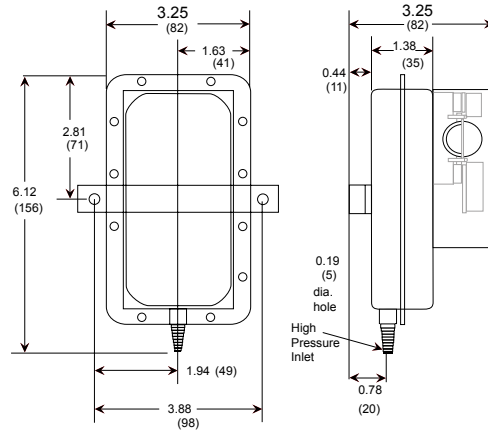
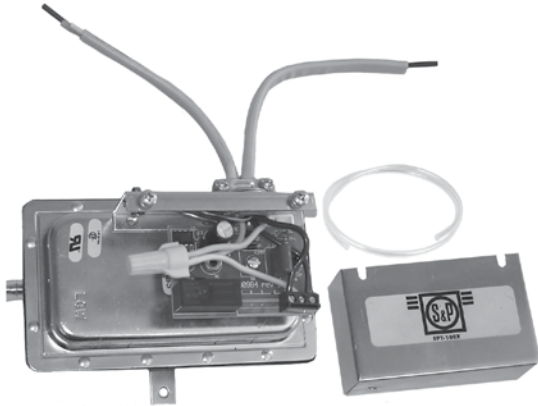
Part #	Description
CS-325	High Current Sensor

Specifications

Operating Temperature	23 ~ 104 °F (-5 ~ +40 °C)
Action Current Range	1.20 - 60 Amp-turns
H x W x D	2.75" x 3.5" x 1.1" (70 x 89 x 28 mm)
AC Conductor Hole	0.75" (19 mm) Diameter
Trip Set-Point	Factory preset at approximately 1.2 Amps
Operating Humidity	0 - 99%
Switch Rating	120 Vac @ 3.5 Amps Max
Mounting Holes	2 x 0.19" holes spaced 3" on base (2 x 5 mm holes spaced 76 mm on base)
Output Type	Triac with volts surge protected design
Leakage Current	< 1mA
Manufacturing Process	ISO 9001 Certified

Dryer Booster Accessories

Pressure Switch



Part #	Description
SPT-100x	Pressure Switch with tubing and probe

Specifications:

Integral recycling delay timer with 10 minute ON, 15 seconds OFF cycle, 120 volt input.

Power: 120 V AC +10%/-15%, 50/60 Hz.

Timing Range: 10 minutes (600 seconds) 10%

Output: SPST NO relay rated for 8 amps (resistive) @ 250 V AC or 1/8 hp @ 250 V AC.

Electrical Connections: Terminal block with clamp-type screw connector suitable for 12-26 AWG.

Temperature Range: -40 to 140 °F (-40 to 60 °C)

Lights & Grilles

Premium Grilles

PG



S&P's premium grilles come standard with steel collars for easy mounting and installation.

Model	Description
PG-100	4" Plastic Grille with 4" Steel Collar
PG-150	6" Plastic Grille with 6" Steel Collar

Grille Dimensions (in inches)



Grille	Dia.	Height	Duct Dia.	Fits Collars
PG-150G	8 1/8	1 5/8	6	PG-150D
PG-100G	4 5/8	1 1/2	4	PG-100D

Collar Dimensions (in inches)



Collar	Diameter	Length
PG-100D	3 3/4	3 1/4
PG-150D	5 3/4	4 5/8

PG Collar

Lights & Grilles

Featuring Vent Lights and Premium Grilles

S&P's Grille Options give you the choice of seven (7) aesthetically pleasing grilles designed to match any bathroom decor. You can choose from our Vent Lights, Premium Grilles or Adjustable Grilles to fit your needs.

These grilles are designed to be used exclusively with one of S&P's remotely mounted inline fans (TD, PV, SWF) for virtually silent bathroom ventilation. Inline fans give you the option to mount your grille over the shower, toilet, tub, or in multiple locations (dual vent).

With S&P's Grille Options the choice is yours!

Vent Lights

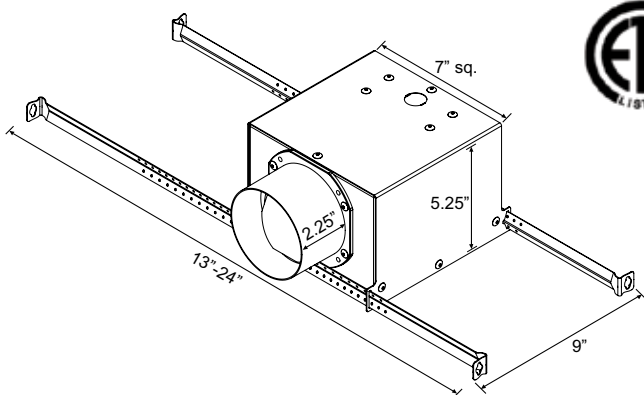
Available with LED Bulbs



S&P's Vent Lights give you ventilation that is "Out-of-Sight and Out-of-Mind"! The Vent Lights appear to be a regular can light, and when combined with a remotely mounted fan, the noise and unsightly look of the traditional bathroom fan are gone! The Vent Lights are aesthetically pleasing grilles with lights that will match any bathroom decor.

Part #	Description
VLED-100	Vent Light with PAR30 LED Bulb
VLH-100	Vent Light with PAR30 Halogen Bulb
VLF-100	Vent Light with Energy Star Rated Compact Fluorescent Bulb

Dimensions (inches)



Features:

- Longer duct collar for 4" duct
- Extendable hanger bars up to 24"
- 7.5" grille
- Built-in backdraft damper
- 3 bulb options

Why Choose the Vent Light with LED Bulbs?

S&P's respect for the environment extends to its Vent Lights with the optional LED Bulb. The benefits to the LED Bulbs include:

- Built to last a minimum of 60,000 hours, plus the LED's use a fraction of the energy that a traditional incandescent or halogen lamp uses
- LED's contain no mercury so they are easy to dispose of, unlike other energy efficient bulbs
- The LED lamps run cool and are shock resistant, making them safer for use in your home

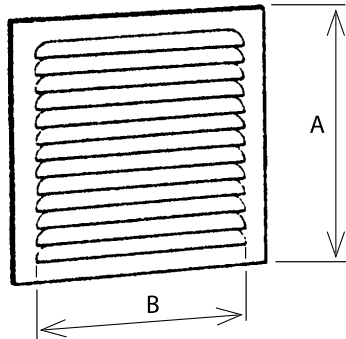
Lights & Grilles

GR Plastic Exterior Fixed Grilles



Part #	Description
GR-100	4" Plastic exterior fixed grille

GRA Aluminum Exterior Fixed Grilles

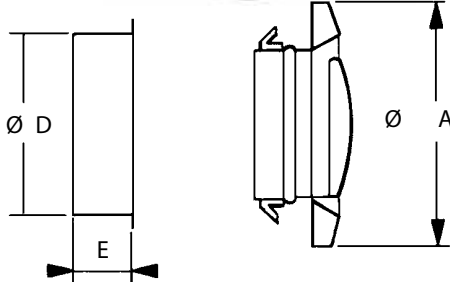


Dimensions inches/mm

Model	A (External Dimensions)	B (Grill Area)
GR-100	5.12 x 5.12 130 x 130	3.94 x 3.94 100 x 100
GR-125	6.50 x 6.50 165 x 165	4.92 x 4.92 125 x 125
GR-150	7.48 x 7.48 190 x 190	5.91 x 5.91 150 x 150
GR-200	9.45 x 9.45 240 x 240	7.87 x 7.87 200 x 200

Adjustable Grilles

BOR/BOC
Plastic/metal

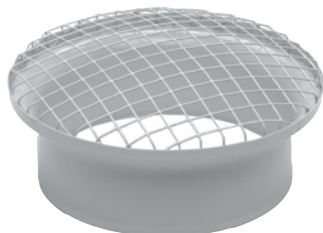


Exhaust grilles for bathrooms, toilets and other small rooms. All models offer an adjustable central valve to regulate the airflow.

Dimensions (in inches)

Part #	A	D	E	Size	Weight (lbs)
BOR/BOC-100	5 ⁷ / ₁₀	4	2	4	1
BOR/BOC-125	5 ⁷ / ₁₀	5	2	5	1
BOR/BOC-150	8	6 ³ / ₁₀	2	6	1
BOR/BOC-200	9 ³ / ₅	7 ⁴ / ₅	2	8	1

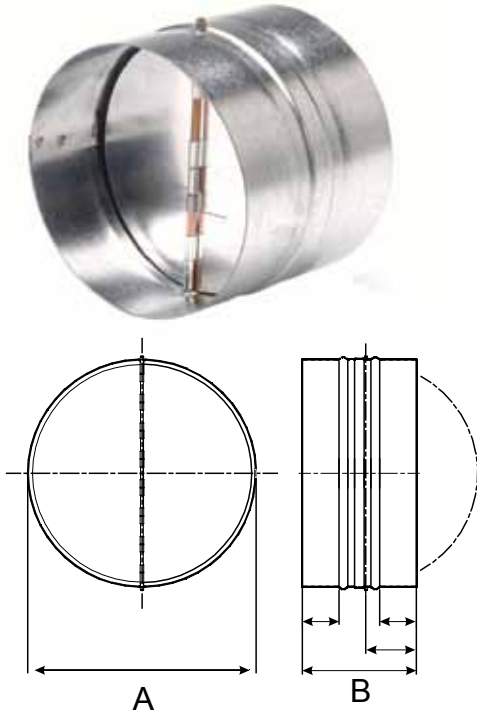
MRJ Mesh Type Grilles TD



Part #	Description
MRJ100	4" TD plastic mesh grille
MRJ125	5" TD plastic mesh grille
MRJ150	6" TD plastic mesh grille
MRJ200	8" TD plastic mesh grille
MRJ250	10" TD plastic mesh grille
MRJ315	12.4" TD plastic mesh grille

Lights & Grilles

CAR-Backdraft Damper



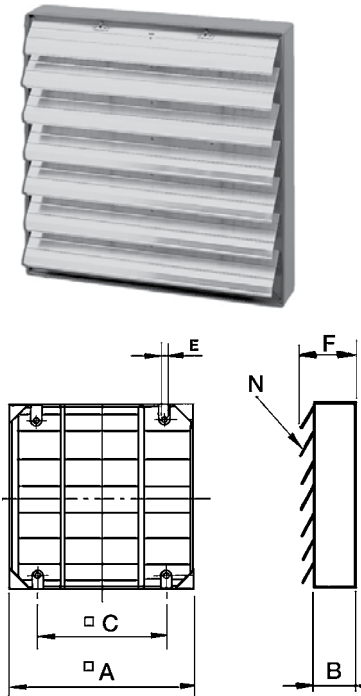
Backdraft dampers are designed with galvanized steel collars and have lightweight aluminum damper blades. They are spring loaded for positive closure.

Dimensions in mm/inches

Model	A	B	Wgt. (lbs)
CAR-100	100 3 15/16	80 3 1/8	1
CAR-125	125 4 15/16	100 3 15/16	1
CAR-150	150 5 7/8	120 4 3/4	1
CAR-200	200 7 7/8	140 5 1/2	1
CAR-250	250 9 13/16	140 5 1/2	2
CAR-315	315 12 3/8	140 5 1/2	2

Shutters

PER-CN Aluminum Louvered Shutters



Dimensions in inches/mm

Model	A	B	C	E	F	N
PER-355CN	15.67 398	1.57 40	13.86 352	.31 8	4.09 104	.24 6
PER-400CN	17.76 451	1.57 40	15.94 405	.31 8	4.09 104	.31 8
PER-450CN	19.84 504	1.57 40	18.03 458	.31 8	4.09 104	.35 9
PER-500CN	21.93 557	1.57 40	20.12 511	.31 8	4.09 104	.39 10

Shutters

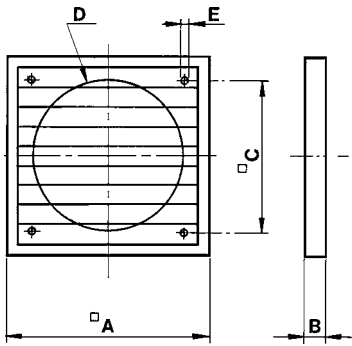
PER-W-Plastic Louvered Shutter



Louvered backdraft shutters manufactured totally from UV stabilized plastic material.

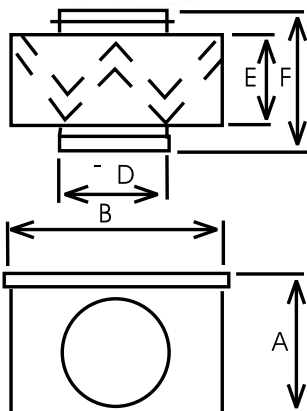
Dimensions in inches/mm

Model	A	B	C	D	E
PER-100W	5 ^{15/16} 151	5/8 16	5 ^{1/2} 140	4 ^{3/16} 106	3/16 5
PER-125W	8 203	9/16 14	7 ^{1/2} 191	5 127	3/16 5
PER-150W	8 203	9/16 14	7 ^{1/2} 191	6 152	3/16 5
PER-200W	9 ^{9/16} 243	13/16 21	7 ^{1/4} 184	8 ^{1/16} 205	3/16 5
PER-250W	11 ^{9/16} 294	1 26	9 ^{3/16} 233	10 ^{1/4} 260	3/16 5
PER-355W	15 ^{1/2} 394	1 26	12 ^{3/16} 310	14 ^{3/16} 360	3/16 5
PER-400W	18 457	1 26	14 ^{3/8} 365	16 ^{9/16} 420	3/16 5
PER-450W	19 ^{5/8} 499	1 ^{1/4} 31	15 ^{9/16} 395	18 ^{1/8} 460	3/16 5



General Accessories

MFL Filter Boxes



Dimensions inches/mm

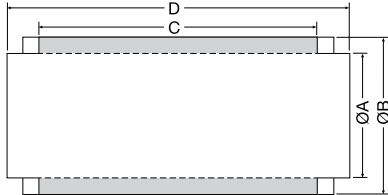
Part #	A	B	D	E	F
MFL-100	7 ^{7/8} 200	7 ^{7/8} 200	3 ^{15/16} 100	6 ^{1/16} 154	7 ^{11/16} 196
MFL-125	7 ^{7/8} 200	7 ^{7/8} 200	4 ^{15/16} 125	6 ^{1/16} 154	7 ^{11/16} 196
MFL-150	8 ^{11/16} 220	8 ^{11/16} 220	6 ^{5/16} 160	6 ^{1/16} 154	7 ^{11/16} 196
MFL-200	9 ^{9/16} 243	9 ^{5/8} 244	7 ^{7/8} 200	6 ^{1/16} 154	7 ^{15/16} 202
MFL-250	11 ^{9/16} 293	11 ^{7/8} 294	9 ^{13/16} 250	6 ^{1/16} 154	8 ^{1/8} 206
MFL-315	13 ^{7/16} 342	13 ^{1/2} 343	12 ^{3/8} 315	6 ^{1/16} 154	8 ^{1/8} 206

General Accessories

SIL-Sound Attenuator



The galvanized steel silencer is used for kitchen range hood ventilation and other applications where noise is a concern. The S&P silencer reduces the “actual” sound level of the kitchen ventilation system by 50% or more. They feature rubber seals on inlet and outlet.



Dimensions in inches/mm

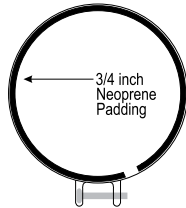
Model	A	B	C	D	Wgt. (lbs)
SIL-200	7 7/8 200	12 3/8 315	27 9/16 700	35 7/16 900	21

ACOP-Vent Mounting Clamp



Manufactured from galvanized steel with an insulated rubber duct seal. These clamps facilitate the connection and disconnection of round ventilation ducts. All models incorporate internal

hanging tabs for suspending the ducting / fan when horizontally mounted.

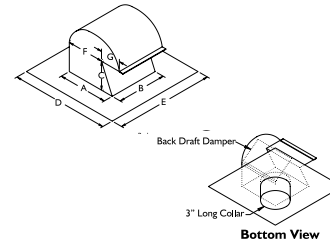


Part #	Description
ACOP-V100	4" Connector clamps (2 ea., sold in pairs)
ACOP-V125	5" Connector clamps (2 ea., sold in pairs)
ACOP-V150	6" Connector clamps (2 ea., sold in pairs)
ACOP-V200	8" Connector clamps (2 ea., sold in pairs)
ACOP-V250	10" Connector clamps (2 ea., sold in pairs)
ACOP-V315	12.4" Connector clamps (2 ea., sold in pairs)

RC-Roof Cap



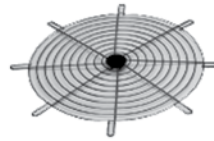
Galvanized steel roof caps with damper flap closure. Duct sizes from 4" to 10".



Dimensions in inches/mm

Model	A	B	C	D	E	F	G	Wgt. (lbs)
RC-4	6 150	6 150	3 1/2 90	12 300	12 300	4 1/2 115	2 1/2 60	1
RC-6	8 200	8 200	4 100	14 355	14 355	5 125	4 100	1
RC-8	8 200	8 200	4 100	14 355	14 355	5 125	4 100	1
RC-10	11 280	11 280	5 125	17 430	17 430	7 175	4 100	1

IG Inlet Guard



Part #	Description
IG-4	4" Inlet wire guard
IG-5	5" Inlet wire guard
IG-6	6" Inlet wire guard
IG-8	8" Inlet wire guard
IG-10	10" Inlet wire guard
IG-12	12.4" Inlet wire guard

General Accessories

Duct Connector



Part #	Description
DC-4	4" Duct Connector
DC-6	6" Duct Connector
DC-8	8" Duct Connector

Worm Clamp



Part #	Description
WC-4	4" Worm Clamp
WC-6	6" Worm Clamp
WC-8	8" Worm Clamp

Flexible Insulated Round Duct



Part #	Description
ID-4	4" Flexible insulated round duct (25')
ID-6	6" Flexible insulated round duct (25')
ID-8	8" Flexible insulated round duct (25')
ID-10	10" Flexible insulated round duct (25')

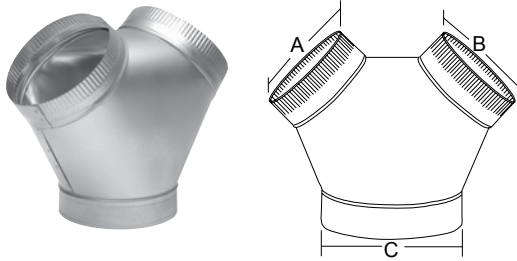
Flexible Round Duct



Part #	Description
FD-4	4" Flexible round duct (25')
FD-6	6" Flexible round duct (25')
FD-8	8" Flexible round duct (25')

General Accessories

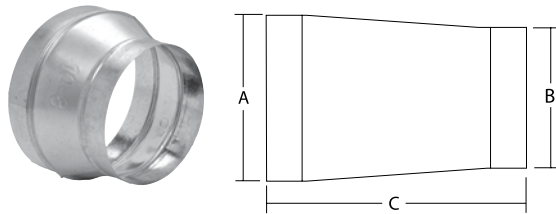
Y Sheet Metal Adapter



Dimensions in inches/mm

Model	A	B	C
SY-4	4 102	4 102	4 102
SY-6	6 152	6 152	6 152
SY-8	8 203	8 203	8 203
SY66-8	6 152	6 152	8 203
SY88-10	8 203	8 203	10 254

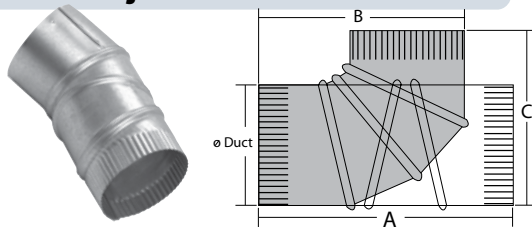
Increaser/Reducer



Dimensions in inches/mm

Model	A	B	C
SR10-8	10 254	8 203	7 178
SR8-6	8 203	6 152	7 1/4 191
SR6-4	6 152	4 102	8 5/8 219
SR315-12	12 2/5 315	12 305	8 1/2 216

Round Adjustable Metal Elbow



Dimensions in inches/mm

Model	ø Duct	A	B	C
ME-4	4 102	8 1/2 216	7 178	7 178
ME-6	6 152	10 5/8 270	9 1/4 235	9 1/4 235

Energy Recovery Controls (Series TR)



SPTL - Percentage Timer Control

- Primary control for TR70, TR130, TR200 and TR300
- Runs unit an adjustable amount of time each hour
- Two wire, low voltage connection to TR
- Meets ASHRAE 62.2 continuous ventilation standards



SPBL - Push Button Point-of-Use Control

- Push button control turns on unit from bathrooms or other intermittent exhaust locations
- 20 minute run-time with one touch
- Push 2x for 40 or 3x for 60 minutes
- Two wire, low voltage connection to SPTL

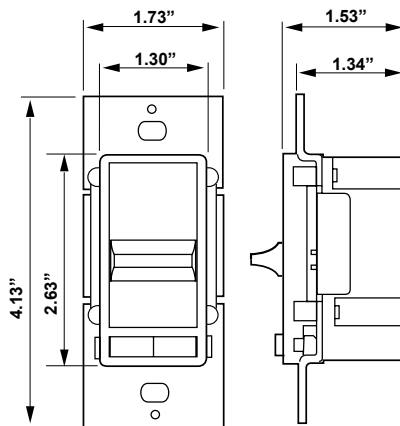


SFM - Percentage Timer Control with Furnace Interlock

- Alternate primary control for TR70, TR130, TR200 and TR300
- Wires to TR unit and either thermostat or furnace control to turn on furnace blower
- Six wire, low voltage connection
- Meets ASHRAE 62.2 continuous ventilation standards

Electrical Controls

SCS



Features:

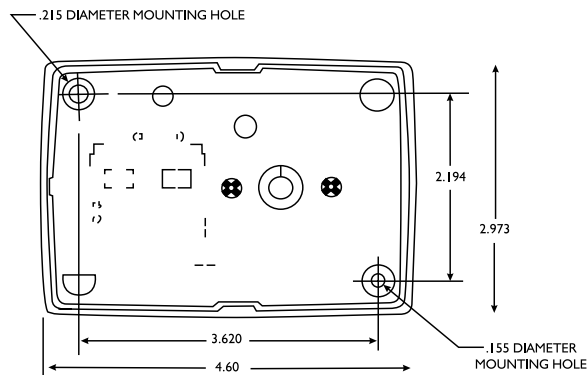
Switch Type: Single-Pole
 Timer Type: SureSlide
 Type: Electro-Mechanical
 Load Type: Incandescent

Load Rating: 600W
 Voltage: 120 Volt AC 60Hz
 Action: Standard ON/OFF
 Protection: Radio/TV Filter
 Color: White

Part #	Description
SCS5	Speed control slide type (5 Amp)

Electrical Controls Cont.

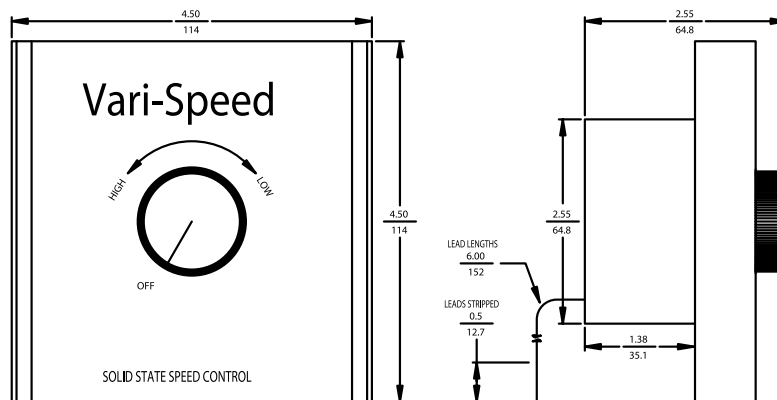
SHW-20 - Dehumidistat



- Rotary dial dehumidistat
- Turn the dial to set desired humidity level
- Designed for convenient installation in bathrooms, kitchen or laundry room
- Dehumidifies when inside air is more humid than the set point
- **Caution:** the outside air must be less humid than the indoor air for this to work.

Part #	Description
SHW-20	Wall mounted dehumidistat

SCR



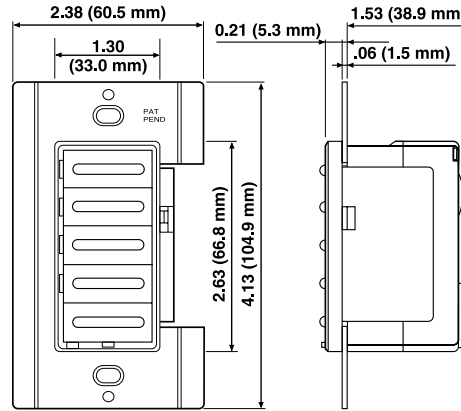
Electrical Ratings

Part #	AC Line Input Voltage (Volts AC - 50/60 Hz)	Maximum Current Rating (Amps RMS)	Ambient Temperature (°F / °C)
SCR-10	115	10	104 / 40
SCR-15	115	15	77 / 25
SCR-210	230	10	104 / 40

Mounting Kit: Includes individual packaging with dial plate, knob, mounting screws, wire connectors, and instructions.

Electrical Controls Cont.

EPBT



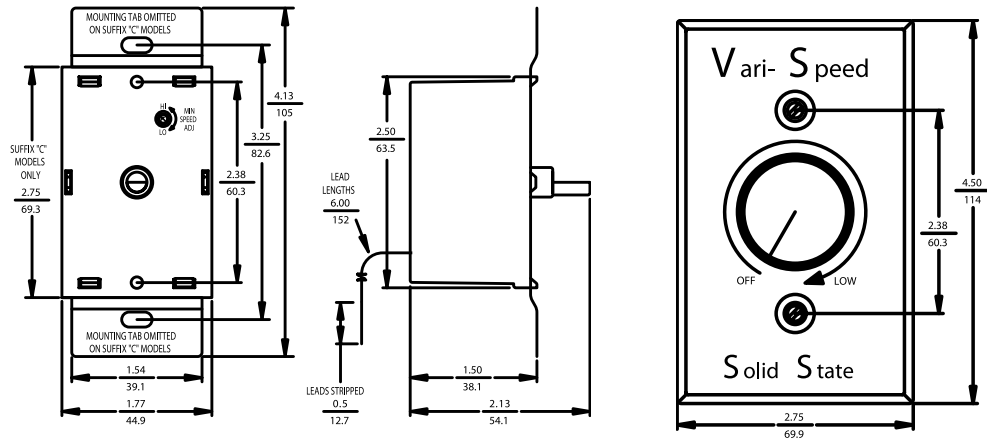
Features:

- Switch Type: Single-Pole
- Timer Type: Four Preset
- Style: Decora
- Type: Electronic
- Time Range: 10-20-30-60 Minutes
- Load Type: Incandescent / Inductive

- Load Rating: 1000W / 20A 1HP-120V
- Voltage: 120 Volt AC 60Hz
- Wire: 3
- Neutral: Required
- Color: White

Part #	Description
EPBT-60	Electronic push button timer (10-20-30-60 min)

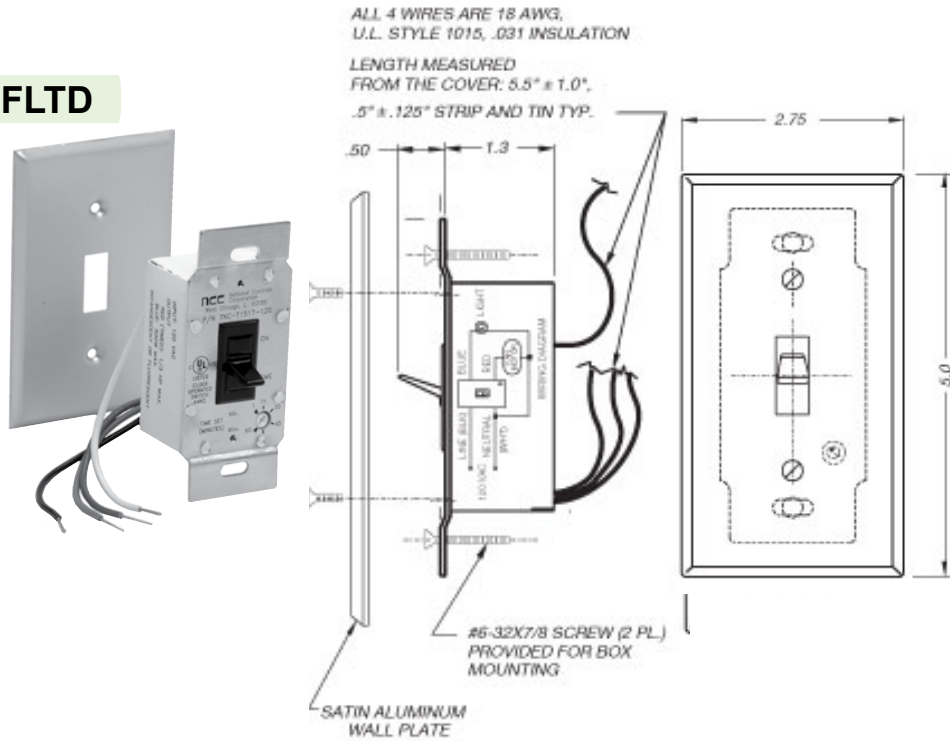
SC



Model No.	AC Line Input Voltage (Volts AC - 50/60 Hz)	Maximum Current Rating (Amps RMS)	Ambient Temperature (°F / °C)
SC-15	115	5	104 / 40
SC-25	115	10	104 / 40

Electrical Controls Cont.

FLTD



Features:

- One switch controls fan and light
- Digital timing circuit
- Saves energy by automatically turning exhaust fan off
- Adjustable fan turn off time
- Fits single switch outlet box
- Simple wire nut hook-up
- Cover plate and hardware provided

Part #	Description
FLTD-60	Fan/light delay timer switch

SRT



Part #	Description
SRT-30	Rotary spring wound timer



S&P USA Ventilation Systems, LLC **S&P Canada Ventilation Products, Inc.**

6393 Powers Avenue
Jacksonville, FL 32217
P. 904-731-4711 · F. 904-737-8322
www.spvg-northamerica.com

5600 Ambler Drive
Mississauga, ON L4W 2K9 - Canada
Tel. 416-744-1217 · Fax 416-744-0887
www.solerpalaucanada.com

