

# Volume Adjustable Round Grilles

Model: **JRC/JRA**  
**DK-M/DK-M3**

**SEIHO**  
www.seiho.com

Seiho's Volume Adjustable Round Grilles offer excellent architectural styling for supply, return and exhaust applications. Designed for ceiling or wall mounting, they provide a readily-accessible air flow adjustment. The high density plastic (JRA, DK-M and DK-M3) and anodized aluminum (JRC) construction are virtually corrosion-proof and are ideal for use in high humidity indoor installations, such as bathrooms, showers, and dish washing areas.

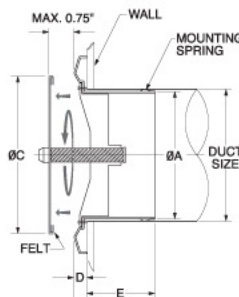
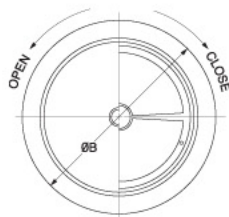
## FEATURES

- Contemporary Design Goes with All Decor
- Low Silhouette, Unobtrusive Profile
- Ceiling or Wall Mountable \*
- Infinite Adjustable Core for Volume Control
- Positive Sealing Core-to-Body Mount
- 360° Diffusion Air Pattern
- Concealed, Spring Clip, Fastening Mechanism
- Available for Standard Duct Sizes in 4" and 6" Round.

\*Recommended use of (3) No.8 screws through body into duct wall to ensure positive connection in ceiling application



Model: **JRC**



### MATERIAL

- Aluminum

### FINISH

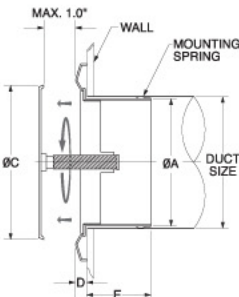
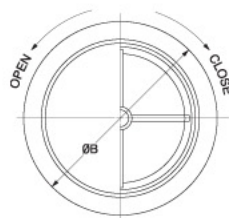
- Clear Anodized
- Custom Colors Available

MODEL	DUCT SIZE	A	B	C	D	E
JRC 4	4	3 3/4	6 5/16	5 1/8	19/32	2 3/16
JRC 6	6	5 11/16	8 3/4	7 5/16	19/32	2 3/8

Product information is subject to change without notice. All dimensions in inches.



Model: **JRA**



### MATERIAL

- ABS Resin

### FINISH

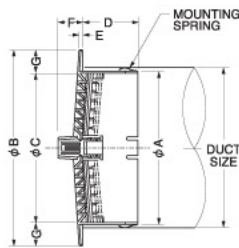
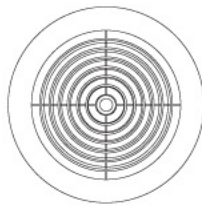
- Off White

MODEL	DUCT SIZE	A	B	C	D	E
JRA 4	4	3 25/32	5 29/32	5 11/32	1/2	1 31/32
JRA 6	6	5 23/32	7 7/8	6 7/32	1/2	1 31/32

Product information is subject to change without notice. All dimensions in inches.



Model: **DK-M3**



### MATERIAL

- ABS Resin

### FINISH

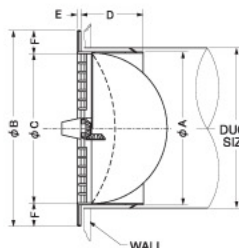
- White

MODEL	DUCT SIZE	A	B	C	D	E	F	FREE AREA
DK 3M3	3	2 29/32	4 1/4	3 1/8	1 15/16	3/16	9/16	0.02sq.ft
DK 4M3	4	3 7/8	5 1/8	4	1 15/16	3/16	1/2	0.04sq.ft
DK 6M3	6	5 7/8	7 1/16	5 15/16	1 15/16	3/16	9/16	0.08sq.ft

Product information is subject to change without notice. All dimensions in inches.



Model: **DK-M**



### MATERIAL

- ABS Resin

### FINISH

- White

MODEL	DUCT SIZE	A	B	C	D	E	F	FREE AREA
DK 3M	3	2 29/32	3 29/32	2 23/32	1 9/16	3/16	5/8	0.02sq.ft
DK 4M	4	3 29/32	5 3/32	3 21/32	2 1/8	3/16	23/32	0.04sq.ft
DK 6M	6	5 13/16	7 1/16	5 11/32	2 1/8	3/16	27/32	0.10sq.ft

Product information is subject to change without notice. All dimensions in inches.