



THE ORIGINAL

- ▶ The Original Slant Back Design
- ▶ The Original Weather Proof Design
- ▶ The Original Bird Proof Design
- ▶ The Original Upward Discharging Louver Design

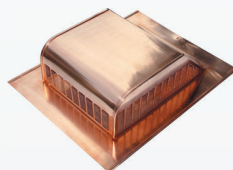
FIELD TESTED & PROVEN

- ▶ Field Tested & Proven for Over 60 Years
- ▶ Field Tested & Proven to Prevent Roof Discoloration
- ▶ Field Tested & Proven Stack Effect for Enhanced Airflow
- ▶ Field Tested & Proven Customer Satisfaction

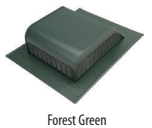
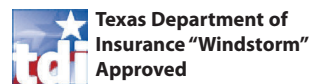
**OFTEN IMITATED
NEVER DUPLICATED**

North American Contractors' "Roof Vent of Choice" for over 60 years!

Model	Overall Size (in.)	Opening Size (in.)	NFA (in. ²)
750	16 x 20 ⁵ / ₁₆ x 5	8	50
750-G Galvanized Steel	16 x 20 ⁵ / ₁₆ x 5	8	50
750-E	23 x 27 ¹ / ₄ x 5	8	50
750-S	16 x 20 ⁵ / ₁₆ x 5	8	50
750-GS Galvanized Steel	16 x 20 ⁵ / ₁₆ x 5	8	50



The 750 is also available in Copper on special order.

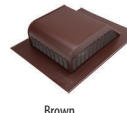


Want more info?
Scan this QR
code with your
smartphone.

Colors Available:



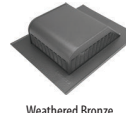
Mill Finish



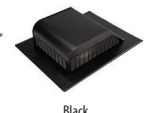
Brown



White



Weathered Bronze



Black

LO405-0312

Find us on
Facebook



Follow us on
Twitter



1.800.643.5596 • Lomanco, Inc. • www.lomanco.com

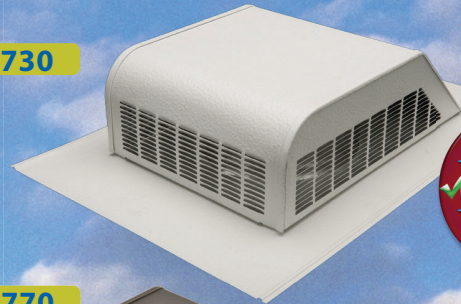
VENTS 700 SERIES

Lomanco 700 Series Roof Louvers are built with three outward and upward discharging side vents to prevent unsightly roof streaking that is so common with ordinary roof louvers. This exclusive Lomanco design also prevents the problem of bird and animal infiltration while providing maximum attic exhaust air flow and weather protection.

FEATURES

- ▶ Designed to prevent roof discoloration.
- ▶ Three sides louvered for greater air flow.
- ▶ Embossed aluminum finishes for added strength, extended paint life, and blending appearance with shingles.
- ▶ 700 has neoprene damper for use as kitchen/bathroom exhaust vent.
- ▶ 730 is a smaller version of a 750 and included in the EVA Combo vent package.
- ▶ **750 is the ORIGINAL slant back vent. See reverse for full details.**
- ▶ 750-E is a 750 with an extended flange size.
- ▶ 750-G; heavy duty galvanized steel construction.
- ▶ 750-S & 750-GS; metal screen insert for enhanced weather protection.
- ▶ 770 is a larger version of a 750.
- ▶ 770-D is a twin 770; off-ridge vent.

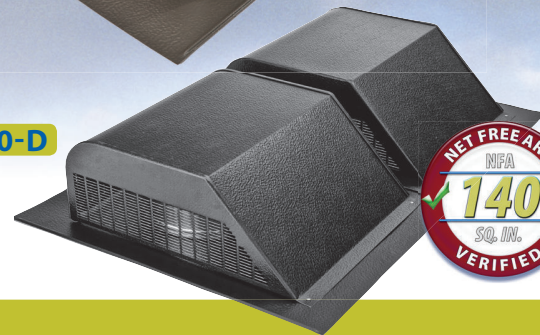
730



770



770-D



PREVENTS UNSIGHTLY ROOF DISCOLORATION!

Model	Overall Size (in.)	Opening Size (in.)	NFA (in. ²)
730*	12 ³ / ₁₆ x 17 ³ / ₄ x 4	6 1/4	30
750*	16 x 20 ⁵ / ₁₆ x 5	8	50
750-G* Galvanized Steel	16 x 20 ⁵ / ₁₆ x 5	8	50
750-E	23 x 27 ¹ / ₄ x 5	8	50
770*	16 ⁵ / ₈ x 22 ³ / ₈ x 6	9 ¹ / ₂	70
770-D*	32 ¹ / ₂ x 22 ³ / ₈ x 6	Two 9 ¹ / ₂	140
700	16 x 20 ⁵ / ₁₆ x 5	8	—
750-S	16 x 20 ⁵ / ₁₆ x 5	8	50
750-GS Galvanized Steel	16 x 20 ⁵ / ₁₆ x 5	8	50

730,750,770,770-D

MIAMI-DADE COUNTY
APPROVED



CSA-approved
(750) 83070



Texas Department of
Insurance "Windstorm"
Approved

Colors Available:



How many Roof Vents do you need?

Your attic floor space to be ventilated in square feet.

1000 1500 2000 2500 3000 3500

ROOF VENT SYSTEM

730	8	12	16	20	24	28
750	5	8	10	12	15	17
770	4	6	7	9	11	12

ROOF VENT SYSTEM

C416	10	16	20	24	30	34
C616	8	10	14	18	20	24
C816	4	6	8	10	12	14
105/190	4	6	8	10	10	12
140	4	6	6	8	10	10
SV-10	4	6	8	10	12	14

LO405-0512

Find us on
Facebook

Follow us on
Twitter



1.800.643.5596 • Lomanco, Inc. • www.lomanco.com

