

# SD-XPF SERIES

Explosion proof standard wall exhaust fans. Efficient, low maintenance and easy to install.



Canarm LFI's explosion proof fans follow a tradition of quality in design, materials and construction. Using our quality "Standard Fan" housing and motor mount as the basis for design, we have developed an efficient, economically priced Explosion Proof Fan. All Explosion Proof Fans have a single speed, dual voltage explosion proof motor that meets and conforms to all the standards that are listed below.

**Class I, Group C** Atmospheres containing ethyl ether, ethylene, gases or vapors of equivalent hazard.

**Class I, Group D** Atmospheres such as acetone, ammonia, benzene, butane, cyclopropane, ethanol, gasoline, hexane, methane, natural gas, naphtha, propane, or gasses or vapors of equivalent hazard.

**Class II Group F** Atmospheres containing carbonaceous dust, including carbon black, charcoal, coal, or coke dusts that have more than 8% total entrapped volatiles, or dusts that have been sensitized by other materials so that they present an explosion hazard.

**Class II Group G** Atmospheres containing combustible dusts not included in group E or F, including flour, grain, wood, plastic and chemicals.

## FEATURES

- Totally enclosed, ball bearing motor with thermal overload protection.
- The fan blades are well-balanced, heavy gauge aluminum.
- The rugged steel welded box housing has a durable powder coated finish.
- Aluminum louver shutters are supported by long life nylon bushings.
- Heavy wire chrome plated OSHA guards on intake side of fan.
- All fans are shipped completely assembled.

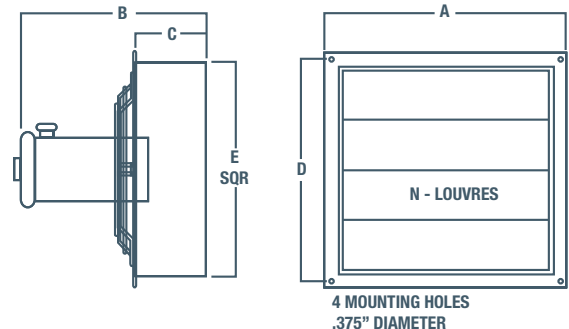
## SPECIFICATIONS

MODEL	FAN SIZE	HP	VOLTS	AMPS	SPEED	RPM	AIRFLOW CAPACITY - CFM				FRAMING DIMENSIONS	WEIGHT (LBS)
							0" SP	.05" SP	.10" SP	.25" SP		
SD08-XPF	8"	1/3	115/230	6.6/3.3	Single	1725	320	280	240	-	11" X 11"	38
SD10-XPF	10"	1/3	115/230	6.6/3.3	Single	1725	620	575	530	-	13" X 13"	39
SD12-XPF	12"	1/3	115/230	6.6/3.3	Single	1725	1640	1600	1540	1390	15" x 15"	42
SD18-XPF	18"	1/3	115/230	6.6/3.3	Single	1725	3200	3150	3090	2920	21" x 21"	60
SD24-XPF	24"	1/3	115/230	6.6/3.3	Single	1725	5500	5400	5310	5100	27" x 27"	72

NOTE: RPM Min (Minimum) is determined when louvers are opened one inch.  
 Note: Wind has a significant effect on exhaust fans. A 10 mph wind creates a 0.05" pressure against the fan. A 20 mph wind creates 0.20" pressure and 30 mph a 0.45" pressure. These pressures are in addition to the static pressure in the building. Wind blocks or hoods should be included in all designs where fans will be subjected to winds above 10 mph.

## DIMENSIONS

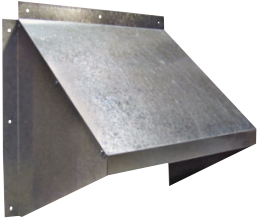
FAN SIZE	A X A SQUARE	B	C	D c/c	E	N
8"	13 1/4"	17 1/2"	4"	12"	10 3/4"	2
10"	15 1/4"	17 1/2"	4"	14"	12 3/4"	2
12"	17 1/4"	20 1/2"	6"	16"	14 3/4"	3
18"	23 1/4"	20 1/2"	6"	22"	20 3/4"	4
24"	29 1/4"	20 1/2"	6"	28"	26 3/4"	5



## ACCESSORIES

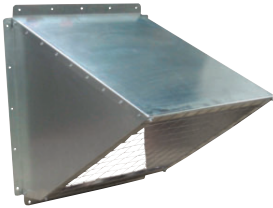
- Hoods
- For a complete listing of all available hoods, see Hoods page.

# HOODS



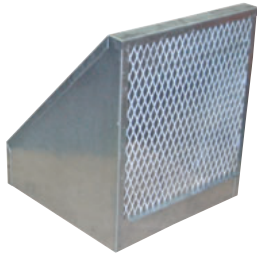
## GH GALVANIZED HOODS

- Economical shipping.
- Easy to assemble, galvanized hood.
- No screens.



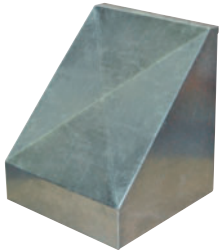
## GH KNOCK DOWN HOODS

- Easy to assemble, galvanized hood.
- Includes bird screen.



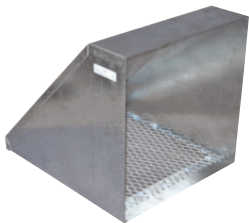
## WHA HOODS

- For AX fans.
- Shipped fully assembled.
- 18 gauge galvanized weather hoods complete with bird screen.
- Optional insect screen available. Consult factory.



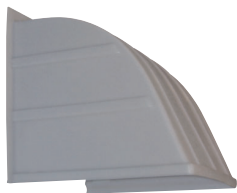
## WHP HOODS

- For Panel fans.
- 18 gauge galvanized weather hoods complete with bird screen.
- Optional insect screen available. Consult factory.



## INTAKE & EXHAUST HOODS

- Shipped fully assembled.
- 18 gauge galvanized weather hoods complete with bird screen.



## PLASTIC HOODS

- Rugged, grey plastic hood.
- No screens.

HOOD MODEL	DIMENSIONS		APPROX. WEIGHT (LBS)	FANS THAT WILL FIT
	INSIDE DIMENSIONS	OUTSIDE DIMENSIONS		
<b>GH GALVANIZED HOODS</b>				
GH-XF12-M	14.75"W X 14.0"H	18"W X 15.75"H	4	XF12 / XB12 / SD8 / SD10 / AX8 / AX10 / AX12
GH-XF16-M	18.75"W X 17.75"H	22"W X 19.75"H	7	XF16 / XB12 / HV12 / HVA12 / ADD12 / DDP12 / DDS12 / SD12-14 / AX14-16
GH-XF20-M	22.75"W X 22"H	26"W X 23.75"H	9	XF20 / XB14 / XB16 / HV14-16 / HVA14-16 / ADD14-16 / DDP14-16 / DDS14-16 / SD16-18 / AX18-20
GH-XF24-M	26.75"W X 26"H	29"W X 27.25"H	12	XFS24
<b>GH KNOCKDOWN HOODS</b>				
GH-KD24	31.65"W X 31.66"H	34.65"W X 34.69"H	31	XB24 / HV24 / HVA24 / ADD24 / DDP24 / DDS24 / SD24 / AX24
GH-KD36	43.62"W X 43.93"H	46.62"W X 46.82"H	75	XB30-36 / HV30-36 / HVA30-36 / ADD30-36 / DDS30-36 / SD30-36 / AX30-36 / AX42
GH-KD48	55.62"W X 55.25"H	58.62"W X 58.82"H	TBA	XB42-48 / HV42-48 / HVA42-48 / ADD42-48 / DDS42-48 / SD42 / AX42
GH-KD60	69.76"W X 69.92"H	72.76"W X 72.95"H	TBA	XB54-60 / HV54-60 / HVA54-60 / ADD54-60
<b>WHA HOODS</b>				
WHA8-10	12.11"W X 12.11"H	-	13	AX08-10, SD8
WHA12	14.05"W X 14.05"H	-	16	AX12, SD10
WHA14	16.11"W X 16.11"H	-	22	AX14, SD12
WHA16	18.11"W X 18.11"H	-	26	AX16, SD14
WHA18	20.11"W X 20.11"H	-	29	AX18, SD16
WHA20	22.05"W X 22.05"H	-	31	AX20, SD18
WHA24	26.05"W X 26.05"H	-	47	AX24
WHA30	33.05"W X 33.05"H	-	59	AX30
WHA36	39.11"W X 39.11"H	-	76	AX36
<b>WHP HOODS</b>				
WH8-10P	14.45"W X 14.45"H	-	20	P08 / P10
WH12P	17.40"W X 17.40"H	-	16	P12
WH14P	19.20"W X 19.20"H	-	24	P14
WH16P	21.20"W X 21.20"H	-	26	P16
WH18P	23.20"W X 23.20"H	-	29	P18
WH20P	25.20"W X 25.20"H	-	44	P20
WH24P	29.15"W X 29.15"H	-	44	P24
WH30P	35.65"W X 35.65"H	-	60	P30
WH36P	41.65"W X 41.65"H	-	77	P36
<b>EXHAUST / INTAKE / WEATHER HOODS</b>				
EH12	16.55"W X 16.55"H	-	9	XF12 / SD8-12 / AX8-14 / XB12 / HV12 / HVA12 / ADD12 / DDP12 / DDS12
EH14	18.60"W X 18.60"H	-	15	XB14 / HV14 / HVA14 / ADD14 / DDP14 / DDS14 / SD14 / XF16 / AX16
EH16	20.60"W X 20.60"H	-	20	AX18 / SD16 / XB16 / HV16 / HVA16 / ADD16 / DDP16 / DDS16
EH18	22.55"W X 22.55"H	-	31	SD18 / XB18 / HV18 / HVA18 / ADD18 / DDP18 / DDS18 / XF20 / AX20
EH20	24.55"W X 24.55"H	-	44	SD20 / XB20 / XF24 / HV20 / HVA20 / ADD20 / DDP20 / DDS20
EH24	30.05"W X 30.05"H	-	60	SD24 / AX24 / XB24 / ADD24 / HV24 / HVA24 / DDP24 / DDS24
EH30	36.35"W X 36.35"H	-	72	SD30 / AX30 / XB30 / HV30 / HVA30 / ADD30 / DDS30 / JFHVA24
EH36	42.30"W X 42.30"H	-	104	SD36 / AX36 / XB36 / HV36 / HVA36 / ADD36 / DDS36 / JFHVA30
EH42	48.63"W X 48.63"H	-	163	XB42 / HV42 / HVA42 / ADD42 / DDS42 / JFHVA36 / SD42 / AX42
EH48	54.64"W X 54.64"H	-	TBA	XB48 / HV48 / HVA48 / ADD48 / DDS48 / JFHVA42
EH54	61.20"W X 61.20"H	-	TBA	XB54 / HV54 / HVA54 / ADD54 / JFHVA48
EH60	69.39"W X 69.39"H	-	TBA	XB60 / HV60 / HVA60 / ADD60
<b>PLASTIC HOODS</b>				
HFP-18G	21.50"W X 21.75"H	-	9	S8 / S10 / S12 / S14 / S16 / S18V / AX08 / AX10 / AX12 / AX14 / AX16 / AX18
HFP-24G	27.50"W X 27.75"H	-	13	S20 / S24 AX20 / AX24