

# P SERIES EXHAUST FANS

Panel mounted fans designed for industrial, commercial & farming applications.



The P series exhaust fan is a sturdily constructed, direct drive, horizontal discharge fan that is typically used for industrial, commercial and farming applications. The P fans are available in single-speed variations as well as two-speed and variable speed models.

## SPECIFICATIONS

SINGLE PHASE	THREE PHASE ***	BLADE DIAMETER	RPM	HP (SINGLE PHASE)	VOLTAGE (SINGLE PHASE)	AMPS (FLA) (SINGLE PHASE)	WEIGHT (LBS)	dB(A) @5 ft	CFM @ STATIC PRESSURE					
									0.00"	0.10"	0.125"	0.25"		
<b>SINGLE SPEED - VARIABLE SPEED FANS</b>														
P12-1V	P12-1*	12"	1700	1/3	115/230	3.8/1.9	26	63	1650	1560	1525	1400		
P12-1VHE	--	12"	1450	1/15	115	1.0	22	60	1350	1290	1275	1150		
P14-1V	P14-1*	14"	1700	1/3	115/230	3.8/1.9	29	67	2170	2030	1950	1900		
P14-1VHE	--	14"	1450	1/15	115	1.0	25	64	1600	1525	1500	1300		
P16-1V	P16-1*	16"	1700	1/3	115/230	3.8/1.9	30	68	2570	2470	2410	2260		
P16-1VHE	--	16"	1450	1/15	115	1.0	26	63	1850	1750	1700	1550		
P18-1V	P18-1*	18"	1700	1/3	115/230	3.8/1.9	36	71	3150	3000	2900	2575		
P20-1V	P20-1*	20"	1700	1/3	115/230	3.8/1.9	39	77	3620	3420	3340	3120		
P24-1V	--	24"	1100	1/3	115/230	4.4/2.2	43	72	5500	5400	5310	5100		
--	P24-1*	24"	1700	1/3	--	--	57	77	5520	5410	5330	5130		
<b>SINGLE SPEED FANS</b>														
P12-2	--	12"	1625	1/4	115	2.7	27	63	1640	1540	1510	1390		
P14-2	--	14"	1625	1/4	115	2.7	30	67	2170	2070	2030	1860		
P16-2	--	16"	1625	1/4	115	2.7	31	68	2370	2270	2210	2060		
P18-2	--	18"	1625	1/3	115	4.1	37	73	3200	3090	3040	2920		
P20-2	--	20"	1625	1/3	115	4.1	39	77	3420	3220	3170	2920		
P24-2	--	24"	1100	1/3	115	5.4	45	70	5000	4500	4300	3600		
P30-2	--	30"	1100	1/3	115/230	4.4/2.2	72	82	8000	7000	6000	5000		
P36-7	P36-7M**	36"	850	1/2	115/230	6.6/3.3	88	72	10000	8500	8000	6200		
<b>TWO SPEED FANS</b>														
<b>*NOTE: 8 &amp; 10" models feature a cord &amp; plug and pull chain control</b>														
*P08	--	8"	1600/1300	25W	115	0.2	14	48	360/292	270/150	230/110	--		
*P10	--	10"	1480/1150	60W	115	0.5	14	55	500/388	420/300	400/250	--		
P12-3	--	12"	1725/1140	1/4	115	3.4	27	64	1670/1100	1600/950	1575/900	1450/625		
P14-3	--	14"	1725/1140	1/4	115	3.4	31	67	2190/1440	2080/1325	2000/1300	1950/850		
P16-3	--	16"	1725/1140	1/4	115	3.4	34	69	2580/1770	2480/1620	2430/1560	2270/1020		
P18-3	--	18"	1725/1140	1/3	115	5.5/2.9	38	74	3200/2310	3050/2030	2950/1960	2625/1750		
P20-3	--	20"	1725/1140	1/3	115	5.5/2.9	41	77	3640/2420	3440/2270	3360/2210	3140/1890		

**SINGLE SPEED EXPLOSION PROOF FANS**  
(Explosion Proof Motors are DIVISION 1 - CLASS 1 - GROUP C & D and CLASS 2 - GROUP F & G)

**Class I, Group C** - Atmospheres containing ethyl ether, ethylene, gases or vapors of equivalent hazard.  
**Class I, Group D** - Atmospheres such as acetone, ammonia, benzene, butane, cyclopropane, ethanol, gasoline, hexane, methane, natural gas, naphtha, propane, or gases or vapors of equivalent hazard.  
**Class II Group F** - Atmospheres containing carbonaceous dust, including carbon black, charcoal, coal, or coke dusts that have more than 8% total entrapped volatiles, or dusts that have been sensitized by other materials so that they present an explosion hazard.  
**Class II Group G** - Atmospheres containing combustible dusts not included in group E or F, including flour, grain, wood, plastic and chemicals.

SINGLE PHASE	THREE PHASE ***	BLADE DIAMETER	RPM	HP (SINGLE PHASE)	VOLTAGE (SINGLE PHASE)	AMPS (FLA) (SINGLE PHASE)	WEIGHT (LBS)	dB(A) @5 ft	CFM @ STATIC PRESSURE			
P12-4	P12-4*	12"	1725	1/3	115/230	6.6/3.3	49	63	1670	1600	1575	1450
P14-4	P14-4*	14"	1725	1/3	115/230	6.6/3.3	49	67	2190	2080	2000	1950
P16-4	P16-4*	16"	1725	1/3	115/230	6.6/3.3	51	68	2580	2480	2430	2270
P18-4	P18-4*	18"	1725	1/3	115/230	6.6/3.3	56	73	3200	3050	2950	2625
P20-4	P20-4*	20"	1725	1/3	115/230	6.6/3.3	57	77	3640	3440	3360	3140
P24-4	P24-4*	24"	1725	1/3	115/230	6.6/3.3	57	77	5520	5410	5330	5130

For three phase motors, substitute "\*" with "M" for 230/460 volt or "P" for 575 volt  
\*\*NOTE: P36-7M is only available in 208-230/460 volt for three phase applications  
Other voltages in single or three phase are available. 50HZ voltages are available. Consult factory.  
\*\*\*These models are not cETLus certified.



## FEATURES

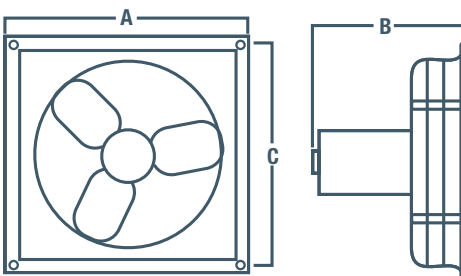
- Sturdily constructed direct drive, horizontal discharge fan.
- Durable powder coated finish.
- 8" - 24" models have heavy wire chrome plated OSHA guards on intake side of fan.
- 30" & 36" models have grey powder coated guards.
- Totally enclosed air over motor with overload protection.
- Ships fully assembled.
- Fans up to 24" can ship via UPS.

**8 & 10" models feature a cord & plug and pull chain control.**

## DIMENSIONS

MODEL	A X A SQUARE	B		C c/c
		P	P-4~	
P08	13 3/8"	5 1/4"	-	12"
P10	15 3/8"	5 1/2"	-	14"
P12	17 1/4"	11"	13 3/4"	16"
P14	19 1/4"	11"	13 3/4"	18"
P16	21 1/4"	11"	13 3/4"	20"
P18	23 1/4"	11 1/4"	14"	22"
P20	25 1/4"	11 1/4"	14"	24"
P24	29 1/4"	11"	13 3/4"	28"
P30	35 1/4"	13 1/4"	-	34"
P36	41 1/4"	13 1/2"	-	40"

~ Explosion Proof Motor, 50 Hz or 3 phase



## ACCESSORIES

- Front guards
- Wall sleeve
- Thermostats
- Backdraft dampers
- Weather hoods
- Controls

For a complete listing on all available accessories, see Accessories for AX & P Series page.  
For a complete listing of all available hoods, see Hoods page.  
For all available control options, see Controls & Thermostats section.

**Consult factory to have accessories installed.**



**8" & 10" MODELS FEATURE A CORD & PLUG AND PULL CHAIN CONTROL**



**P4 SERIES EXPLOSION PROOF MOTOR**

# ACCESSORIES FOR AX & P SERIES FANS

## FRONT GUARD FOR AX & P SERIES

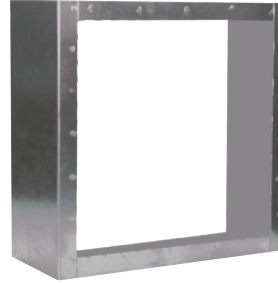
- 18 gauge galvanized 3/4" expanded metal screen, 6" deep.



FITS FAN	MODEL	WEIGHT (LBS)
8"	XFG8-10	6
10"	XFG8-10	6
12"	XFG12	6
14"	XFG14	8
16"	XFG16	9
18"	XFG18	10
20"	XFG20	10
24"	XFG24	13
30"	XFG30	TBA
36"	XFG36	TBA

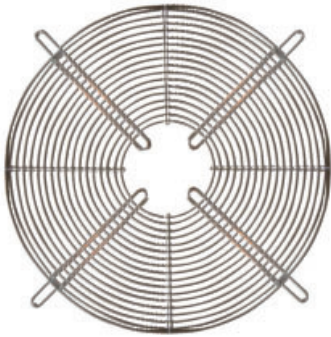
## PANEL SLEEVES FOR P SERIES

- Sleeves are 9 1/2" deep.



FITS FAN	MODEL	WEIGHT (LBS)
8"	PSL08	14
10"	PSL10	14
12"	PSL12	14
14"	PSL14	14
16"	PSL16	14
18"	PSL18	15
20"	PSL20	19
24"	PSL24	23
30"	PSL30	26
36"	PSL36	30

## REPLACEMENT GUARDS



FITS FAN	MODEL	DESCRIPTION	WEIGHT (LBS)
8"	R-2X115	8" - 10" OSHA motor mount	3
10"	R-2X115	8" - 10" OSHA motor mount	3
12"	R-2X116	12" OSHA motor mount	3
14"	R-2X117	14" - 16" OSHA motor mount	4
16"	R-2X117	14" - 16" OSHA motor mount	4
18"	R-2X118	18" - 20" OSHA motor mount	5
20"	R-2X118	18" - 20" OSHA motor mount	5
24"	R-2X119	24" OSHA motor mount	7
30"	R-2X113	30" OSHA motor mount	8
36"	R-2X114	36" OSHA motor mount	9

## MOTORIZED & GRAVITY DAMPERS FOR FRESH AIR INTAKE



MOTORIZED DAMPER

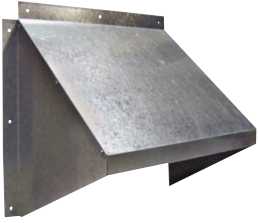
FITS FAN	MODEL #	
	MOTORIZED DAMPERS	BACK DRAFT DAMPERS
8"	SX3210X10	SR3210X10
10"	SX3210X10	SR3210X10
12"	SX3212X12	SR3212X12
14"	SX3214X14	SR3214X14
16"	SX3216X16	SR3216X16
18"	SX3218X18	SR3218X18
20"	SX3220X20	SR3220X20
24"	SX3224X24	SR3224X24
30"	SX3230X30	SR3230X30
36"	SX3236X36	SR3236X36

The Motorized dampers listed above are 110/230V.  
For 24V AC, replace X with Z.



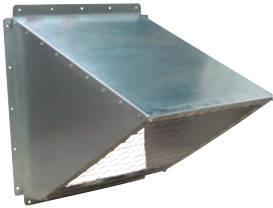
BACK DRAFT DAMPER

# HOODS



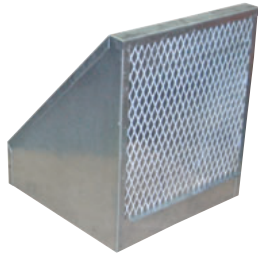
## GH GALVANIZED HOODS

- Economical shipping.
- Easy to assemble, galvanized hood.
- No screens.



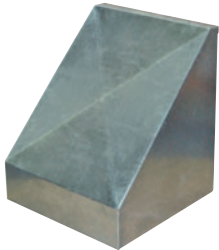
## GH KNOCK DOWN HOODS

- Easy to assemble, galvanized hood.
- Includes bird screen.



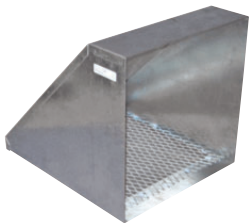
## WHA HOODS

- For AX fans.
- Shipped fully assembled.
- 18 gauge galvanized weather hoods complete with bird screen.
- Optional insect screen available. Consult factory.



## WHP HOODS

- For Panel fans.
- 18 gauge galvanized weather hoods complete with bird screen.
- Optional insect screen available. Consult factory.



## INTAKE & EXHAUST HOODS

- Shipped fully assembled.
- 18 gauge galvanized weather hoods complete with bird screen.



## PLASTIC HOODS

- Rugged, grey plastic hood.
- No screens.

HOOD MODEL	DIMENSIONS		APPROX. WEIGHT (LBS)	FANS THAT WILL FIT
	INSIDE DIMENSIONS	OUTSIDE DIMENSIONS		
<b>GH GALVANIZED HOODS</b>				
GH-XF12-M	14.75"W X 14.0"H	18"W X 15.75"H	4	XF12 / XB12 / SD8 / SD10 / AX8 / AX10 / AX12
GH-XF16-M	18.75"W X 17.75"H	22"W X 19.75"H	7	XF16 / XB12 / HV12 / HVA12 / ADD12 / DDP12 / DDS12 / SD12-14 / AX14-16
GH-XF20-M	22.75"W X 22"H	26"W X 23.75"H	9	XF20 / XB14 / XB16 / HV14-16 / HVA14-16 / ADD14-16 / DDP14-16 / DDS14-16 / SD16-18 / AX18-20
GH-XF24-M	26.75"W X 26"H	29"W X 27.25"H	12	XFS24
<b>GH KNOCKDOWN HOODS</b>				
GH-KD24	31.65"W X 31.66"H	34.65"W X 34.69"H	31	XB24 / HV24 / HVA24 / ADD24 / DDP24 / DDS24 / SD24 / AX24
GH-KD36	43.62"W X 43.93"H	46.62"W X 46.82"H	75	XB30-36 / HV30-36 / HVA30-36 / ADD30-36 / DDS30-36 / SD30-36 / AX30-36 / AX42
GH-KD48	55.62"W X 55.25"H	58.62"W X 58.82"H	TBA	XB42-48 / HV42-48 / HVA42-48 / ADD42-48 / DDS42-48 / SD42 / AX42
GH-KD60	69.76"W X 69.92"H	72.76"W X 72.95"H	TBA	XB54-60 / HV54-60 / HVA54-60 / ADD54-60
<b>WHA HOODS</b>				
WHA8-10	12.11"W X 12.11"H	-	13	AX08-10, SD8
WHA12	14.05"W X 14.05"H	-	16	AX12, SD10
WHA14	16.11"W X 16.11"H	-	22	AX14, SD12
WHA16	18.11"W X 18.11"H	-	26	AX16, SD14
WHA18	20.11"W X 20.11"H	-	29	AX18, SD16
WHA20	22.05"W X 22.05"H	-	31	AX20, SD18
WHA24	26.05"W X 26.05"H	-	47	AX24
WHA30	33.05"W X 33.05"H	-	59	AX30
WHA36	39.11"W X 39.11"H	-	76	AX36
<b>WHP HOODS</b>				
WH8-10P	14.45"W X 14.45"H	-	20	P08 / P10
WH12P	17.40"W X 17.40"H	-	16	P12
WH14P	19.20"W X 19.20"H	-	24	P14
WH16P	21.20"W X 21.20"H	-	26	P16
WH18P	23.20"W X 23.20"H	-	29	P18
WH20P	25.20"W X 25.20"H	-	44	P20
WH24P	29.15"W X 29.15"H	-	44	P24
WH30P	35.65"W X 35.65"H	-	60	P30
WH36P	41.65"W X 41.65"H	-	77	P36
<b>EXHAUST / INTAKE / WEATHER HOODS</b>				
EH12	16.55"W X 16.55"H	-	9	XF12 / SD8-12 / AX8-14 / XB12 / HV12 / HVA12 / ADD12 / DDP12 / DDS12
EH14	18.60"W X 18.60"H	-	15	XB14 / HV14 / HVA14 / ADD14 / DDP14 / DDS14 / SD14 / XF16 / AX16
EH16	20.60"W X 20.60"H	-	20	AX18 / SD16 / XB16 / HV16 / HVA16 / ADD16 / DDP16 / DDS16
EH18	22.55"W X 22.55"H	-	31	SD18 / XB18 / HV18 / HVA18 / ADD18 / DDP18 / DDS18 / XF20 / AX20
EH20	24.55"W X 24.55"H	-	44	SD20 / XB20 / XF24 / HV20 / HVA20 / ADD20 / DDP20 / DDS20
EH24	30.05"W X 30.05"H	-	60	SD24 / AX24 / XB24 / ADD24 / HV24 / HVA24 / DDP24 / DDS24
EH30	36.35"W X 36.35"H	-	72	SD30 / AX30 / XB30 / HV30 / HVA30 / ADD30 / DDS30 / JFHVA24
EH36	42.30"W X 42.30"H	-	104	SD36 / AX36 / XB36 / HV36 / HVA36 / ADD36 / DDS36 / JFHVA30
EH42	48.63"W X 48.63"H	-	163	XB42 / HV42 / HVA42 / ADD42 / DDS42 / JFHVA36 / SD42 / AX42
EH48	54.64"W X 54.64"H	-	TBA	XB48 / HV48 / HVA48 / ADD48 / DDS48 / JFHVA42
EH54	61.20"W X 61.20"H	-	TBA	XB54 / HV54 / HVA54 / ADD54 / JFHVA48
EH60	69.39"W X 69.39"H	-	TBA	XB60 / HV60 / HVA60 / ADD60
<b>PLASTIC HOODS</b>				
HFP-18G	21.50"W X 21.75"H	-	9	S8 / S10 / S12 / S14 / S16 / S18V / AX08 / AX10 / AX12 / AX14 / AX16 / AX18
HFP-24G	27.50"W X 27.75"H	-	13	S20 / S24 AX20 / AX24