



## BATHROOM EXHAUST KIT INSTALLATION GUIDE

(covers all HVACQuick.com ASBI bathroom exhaust kits)

CONGRATULATIONS and thank you for your purchase of the HVACQuick.com Bathroom Ventilation Kit. Our systems are designed to give you many years of quiet, reliable and powerful operation when installed according to this guide.

**IMPORTANT:** Please take a few minutes to thoroughly read over the different sections of this installation guide and make sure you are fully prepared for the installation of your bathroom kit. Please save this guide to refer back to in the future and always be sure to follow local codes, ordinances and safety precautions before, during and after the installation. If you have any specific questions about specific codes, please refer to your local code authorities.

---

### INSTALLATION WARNINGS AND GENERAL TIPS *(please read thoroughly)*

#### Suitable Fan Environment

The TD-Mixvent units are suitable for the exhaust or supply of both conditioned and un-conditioned airstreams within the temperature ranges (inclusive of duct airstream temperature) of -40 degrees C, up to +40 degrees C for the model TD-100x; and -40 degrees C, up to +60 degrees C for models TD-150, 200.

#### Fan & Switch Electrical Warnings

**WARNING: TO REDUCE THE RISK OF FIRE OR ELECTRIC SHOCK, OR INJURY TO PERSONS, OBSERVE THE FOLLOWING:**

- (a) Use the fan and components only in the manner intended by the manufacturer. If you have any questions, please contact us.*
- (b) Before servicing or cleaning your fan, make sure you switch the power off at the service panel and lock the service disconnecting means to prevent power from being switched on accidentally. When the service disconnecting means cannot be locked, securely fasten a warning device such as a tag to the service panel.*
- (c) Installation work and electrical wiring must be done by qualified person(s) in accordance with all applicable codes and standards including fire-rated construction.*
- (d) Sufficient air is needed for proper combustion and exhausting of gases through the flue (chimney) of fuel burning equipment to prevent back drafting. Follow the heating equipment manufacturer's guideline and safety standards such as those published by the National Fire Protection Association (NFPA) and the American Society For Heating, Refrigeration and Air Conditioning Engineers (ASHRAE) and the local code authorities.*
- (e) When cutting or drilling into a wall or ceiling, be careful not to damage electrical wiring and other hidden utilities.*
- (f) Please remember that all ducted fans must be vented to the outside. (ALWAYS)*
- (g) If this unit is to be installed over a tub or shower, it must be marked as appropriate for the application and connected to a GFCI (Ground Fault Circuit Interrupter) - protected branch circuit.*
- (h) Never place a switch where it can be reached from a tub or shower.*

(fan & switch electrical warnings cont'd)

**(i) CAUTION:** The fan is for general ventilating use only. DO NOT USE to ventilate hazardous or explosive materials and vapors.

**(j) CAUTION:** MOUNT WITH THE LOWEST MOVING PARTS AT LEAST 8 FEET ABOVE THE FLOOR OR GRADE LEVEL.

\*\*\*\*\*All fans operate on a standard 120V, 60HZ, A/C electrical supply. Our fans incorporate two speed motors and the live supply must only be made either to the hi or lo terminal- NEVER BOTH.

## Fan Orientation & Typical Installation

The fans allow the flexibility to be mounted in any orientation (horizontal or vertical). See the illustration below (**FIGURE 1**) for a typical bathroom kit installation.

**Figure 1** (typical bathroom kit installation)



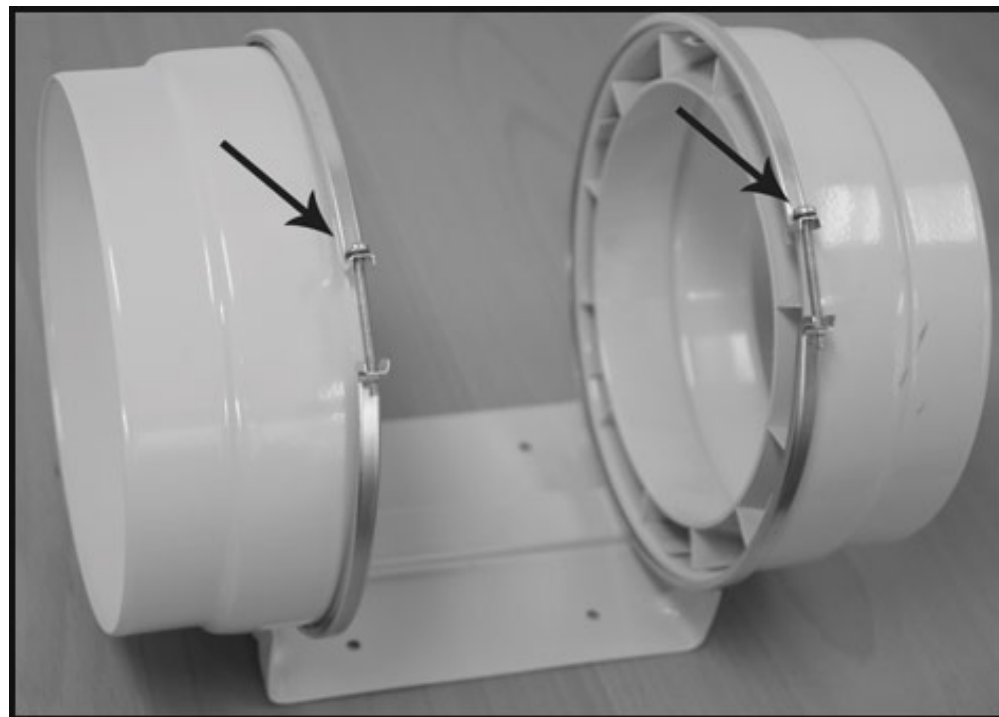
## Tips Concerning Ducting

HVACQuick.com Bathroom Kits rely on using flexible insulated ducting (when code permits) to keep sound levels to a minimum - a key feature of our Bathroom Kits. We recommend using the correct size ducting for the fan (typically the same size as the fan discharge or larger), and when using flexible insulated ducting, it should be stretched as tight and as straight as possible. If the ducting must bend at the discharge of the fan, make sure the bend radius is as large as possible. Failing to use insulated ductwork can result in excessive condensation buildup within the duct and sound levels outside of our acceptable noise standards. Ducting should be secured using plastic zip-ties (included) and/or heavy-duty duct sealing tape (not included).

We highly recommend a minimum of 8' of duct between the inlet grill and fan. Failure to meet this requirement can diminish the system's overall performance and possibly result in an increase in sound levels. For the ASBI, twin bathroom kits, it is good practice to place a couple of feet of ductwork between the fan and the y-splitter.

## FAN INSTALLATION

**STEP 1.** To install the fan, you must first remove the fan motor/wheel assembly. To do so, loosen the two spring clips around the casing and simply slide the main assembly out (FIGURE 3 - A)



(fan installation cont'd)

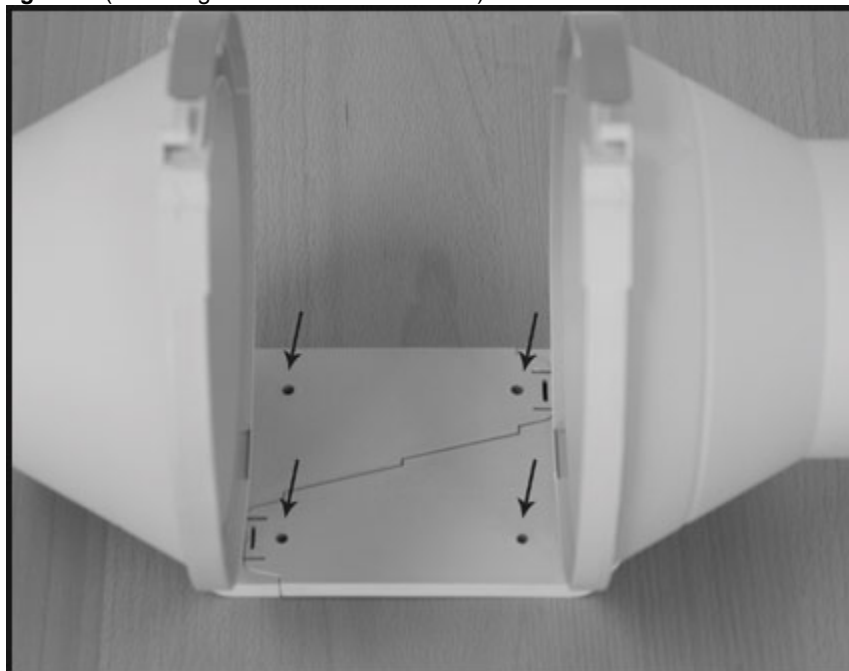
**FIGURE 4** shows the assembly removed.

**Figure 4** (removed fan body)



**STEP 2.** Secure the fan by way of the mounting bracket to a fixed structure. (**FIGURE 5**)

**Figure 5** (mounting bracket and screw holes)



(fan installation cont'd)

**STEP 3.** Replace the fan motor/wheel assembly.

**STEP 4.** Wire the wall switch to the fan.

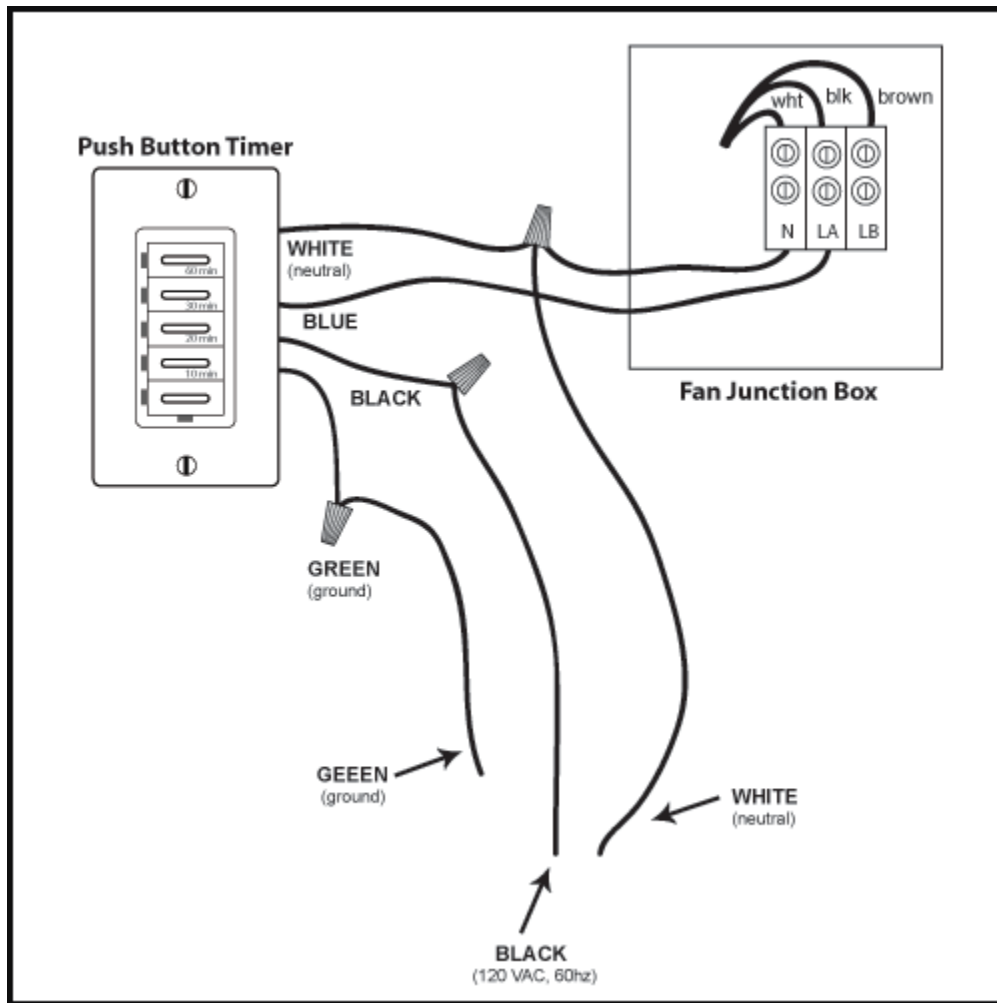


**WARNING: PLEASE MAKE SURE TO COMPLETE THE FOLLOWING STEPS SAFELY AND THAT YOU ADHERE TO LOCAL CODE REQUIREMENTS. KEEP THE MAIN POWER OFF UNTIL YOU HAVE FULLY COMPLETED WIRING THE FAN UNIT.**

This diagram (**FIGURE 6**) is for the following HVACQuick.com bath kits ONLY. Consult the following pages for the wiring diagram that corresponds to your bathroom kit.

\*\*\*ASBI- - \$ \*\*\*\*\* " " ASBI- & ) \$H" \*\*\*5 G6 4" ) \$H"

**Figure 6** (fan wiring)



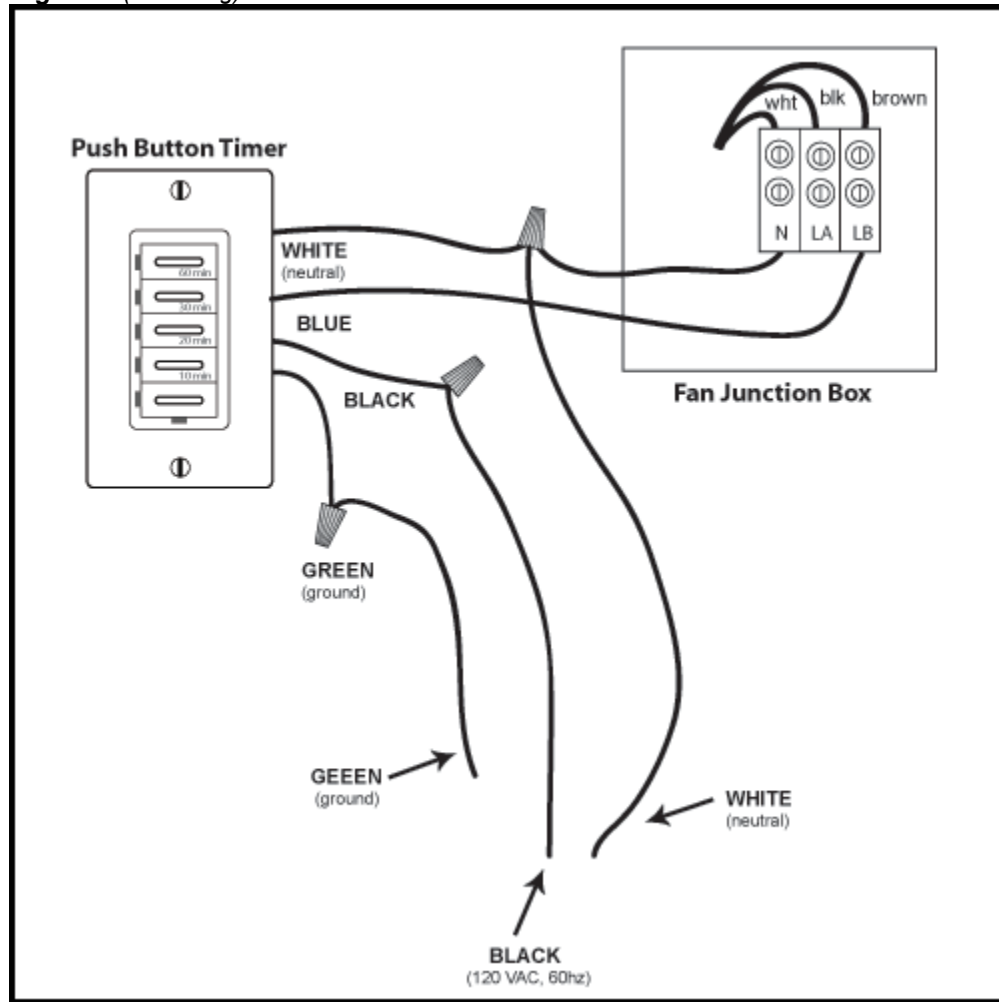
**EXPERT ADVICE**

- For the AUBI-250T/BH kit (when used to serve two bathrooms with a timer in each bathroom), wire each switch according to this diagram. : **YYX both timers are from the same electrical circuit.**

This diagram (**FIGURE 7**) is for the following ASBI bathroom kit wiring **ONLY**. Consult the following pages for the wiring diagram that corresponds to your bathroom kit.

- ASBI- 150

**Figure 7** (fan wiring)

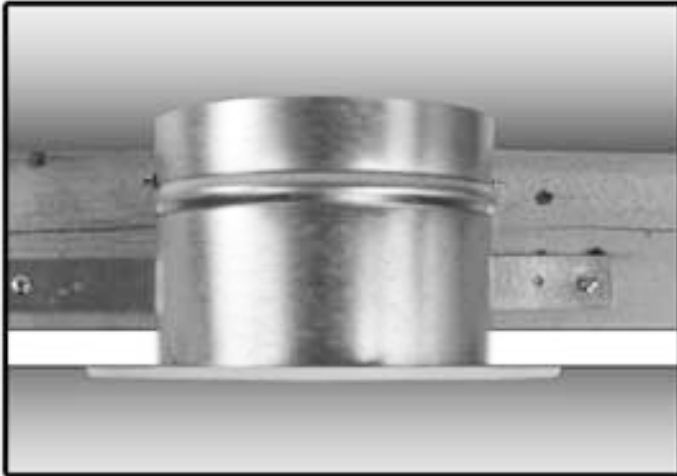


## GRILLE INSTALLATION

**STEP 1.** Select the location where you would like to place your grille(s) and remember to inspect the space within the walls or ceiling joists to make sure it truly is a good spot for the grille. The grille/damper has a mounting collar with a perforated hanging strap (**FIGURE 10**) for direct attachment to a beam or ceiling joist. Allow enough space of the collar/damper and the beam to attach the duct work. If the location is a difficult place to install the grille, you can use a cross-member mounted to the wall or ceiling framing.

**STEP 2.** Put the collar/damper in the location you wish to install it and trace a circle onto the surface. Cut the surface from the interior of the bathroom. *Please note: To help keep a smooth finish when mounting through sheet rock, use a razor knife to make your cut.*

**Figure 9** (mounted grille)



**Figure 10** (mounting collar)



**STEP 3.** Place the mounting collar into the hole (from the crawlspace or attic) until the edge of the collar is flush with the mounting surface. (**FIGURE 9**) Attach the mounting collar to the support beam with 2" wood screws (not provided), then attach your ductwork using a durable duct sealing tape. *NOTE: If an immediate elbow is necessary, make sure that the bend radius is as large as possible.*

**STEP 4.** Snap the grille tightly into the mounting collar/damper for an airtight fit. If there is a gap between the collar and the ceiling it should be caulked thoroughly to avoid air leakage. The grille can be pulled out at any time and is fully cleanable. (no abrasives)

### EXPERT ADVICE

- Make sure to place the grille (if using one) as central as possible within the bathroom.
- For kits using multiple grilles in one bathroom, make sure that you place the grilles near sources of moisture and odors (showers, saunas, toilets, sinks, etc.). A typical example is having one grille near the shower and the other near the toilet. We don't advise that you place a grille directly in the shower due to possible drafts.
- When installing a twin bathroom kit, remember to put a few feet of ductwork between the fan and the y-splitter.

## ROOFCAP INSTALLATION

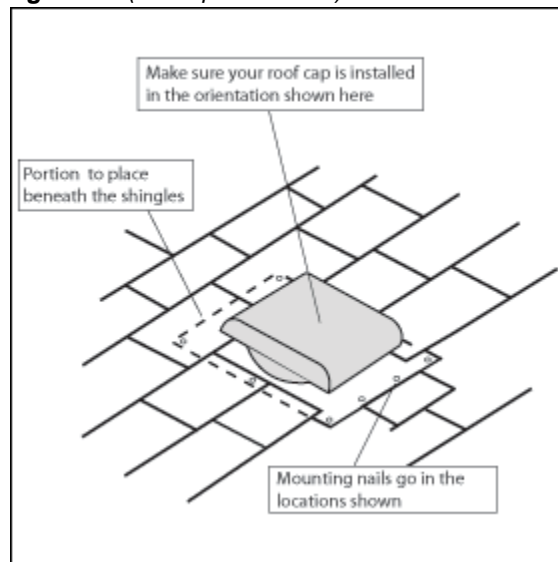
These are general instructions for installing the roof cap (if applicable) provided in HVACQuick.com Bathroom Kits on a shingle roof and may vary depending on your particular application, roofing material, code requirements and other factors. If you have any specific questions about installing your roof cap, please consult a roofing professional.

**STEP 1.** Cut a hole in your roof about a 1/2 inch larger than your duct.

**STEP 2.** Carefully lift shingles and slide the rear flange of the roof cap under the shingles. **(FIGURE 11)**

**STEP 3.** Use roof cement to seal shingles to the top and sides of the roof cap. Make sure to seal all nail heads thoroughly.

**Figure 11** (roofcap installation)



**STEP 4.** Attach your ducting to the roof cap starting collar from below.

### EXPERT ADVICE

- Make sure to use heavy-duty ties and/or professional duct sealing tape for all connections.
- Don't forget to seal up all seams (including the nail heads) thoroughly.



## WALL HOOD INSTALLATION

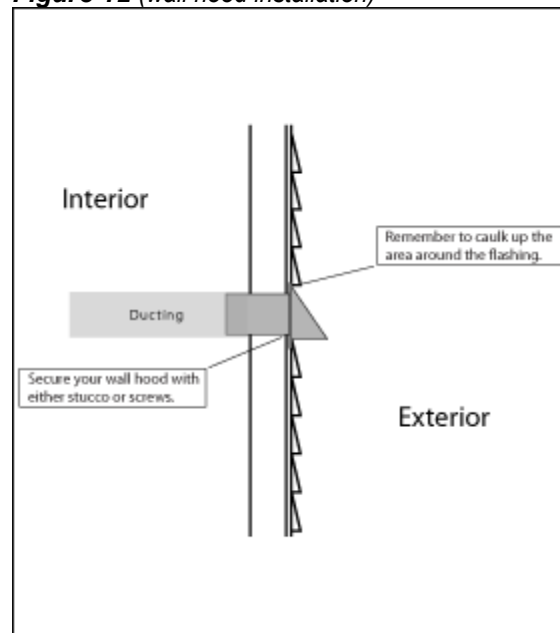
These are general instructions for installing the wall hood (if applicable) provided in HVACQuick.com Bathroom Kits and may vary depending on your particular application, siding material, code requirements and other factors. If you have any specific questions about installing your wall hood, please consult a building professional.

**STEP 1.** Cut a hole in the wall location to the size of your duct.

**STEP 2.** Feed your ducting through the wall. **(FIGURE 12)**

**STEP 3.** Connect your wall hood to the ducting using heavy-duty ductties and/or duct sealing tape.

**Figure 12** (wall hood installation)



**STEP 4.** Apply caulk to the back of the wall hood flashing and slide into place. Screw it to the wall if applicable.

### EXPERT ADVICE

- Make sure to use heavy-duty ties and/or professional duct sealing tape for all connections.

## LIMITED WARRANTY

HVACQuick.com (Distributor) warrants from the date of purchase that the product supplied by Distributor is free of defects in material and workmanship for a period of 3 years.

If a failure of the product occurs, contact the Distributor at 877-711-4822 and give the model number of the product, the purchase date, proof of purchase, and a description of the problem. The Distributor will cover shipping charges during the first 6 months of warranty. Customer is responsible for all inbound and outbound shipping charges after the initial 6 month period.

Once a problem is diagnosed, and proof of purchase is verified, the Distributor will have the option of shipping the necessary repair part(s) to the Customer or having the product returned to the Distributor for repair or replacement.

If the Distributor finds the returned product to be in operating condition, the product will be returned to the customer at customer's expense. Distributor reserves the right to obtain a credit card authorization for possible freight charges or non-return of defective parts/unit.

### *Specific warranty exclusions:*

Except as provided by this express warranty, the goods are sold without any implied warranties. This limited warranty does not cover labor or field diagnosis, nor does it cover failure of the installer to follow installation instructions, damage resulting from accident, misuse or abuse, lack of maintenance, improper installation. In no event, shall the Distributor be liable for any special, incidental, or consequential damages resulting from any defect in material or workmanship. It is expressly understood that Buyer's sole and exclusive remedy shall be repair or replacement of defective parts.

### **DISTRIBUTOR INFO:**

HVACQuick.com  
625 Charles Way  
Medford, OR 97520  
Office: 1.877.711.4822  
Fax: 541.245.2988  
email: sales@hvacquick.com  
web: hvacquick.com