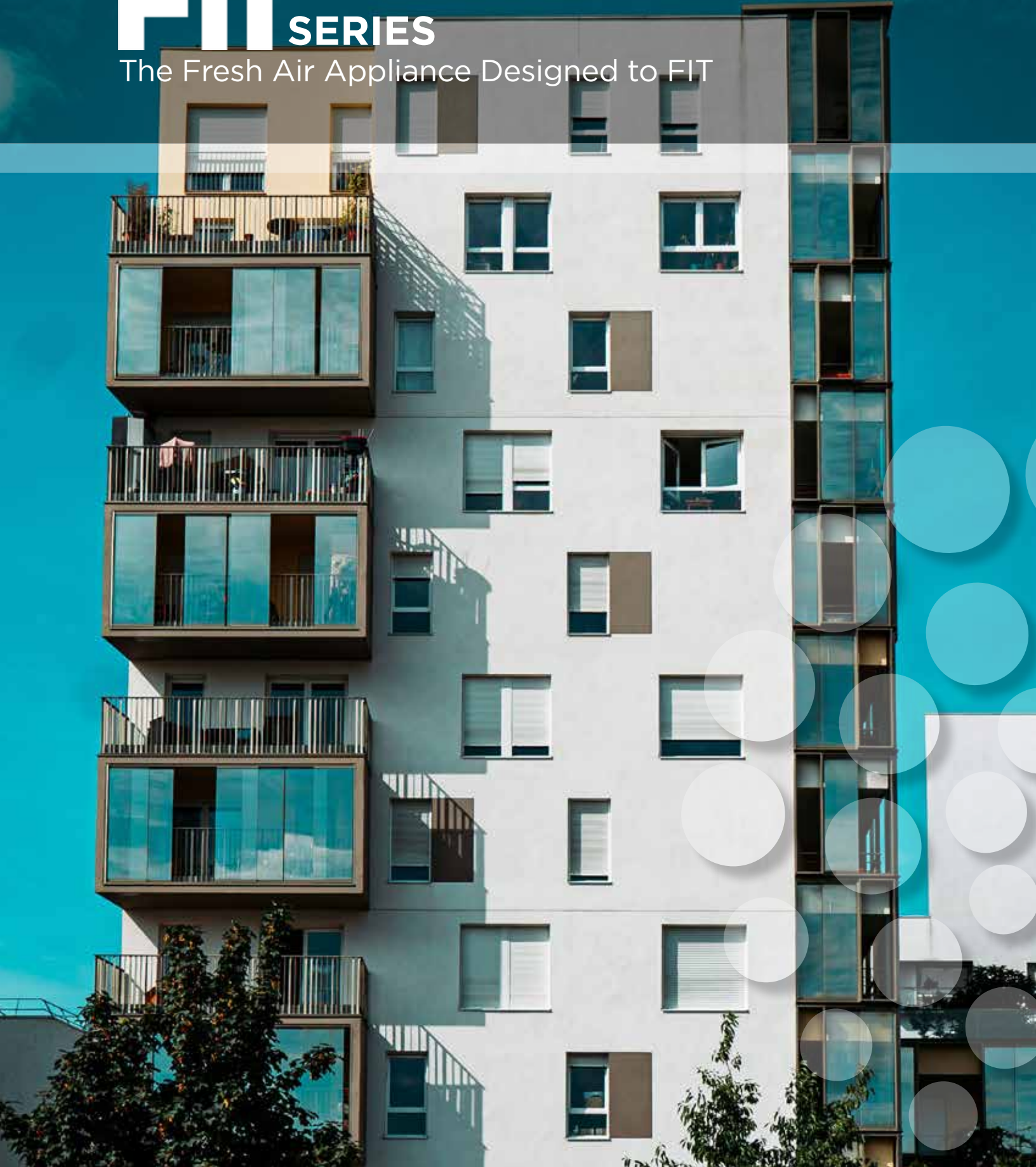


# FIT<sup>®</sup> SERIES

The Fresh Air Appliance Designed to FIT

 fantech<sup>®</sup>  
a systemair company



# FITS? YOU BET!

The low profile **FIT® Series** is a range of fresh air appliances with energy recovery ideally suited for condos, apartments and single family homes that have no mechanical room, where the appliance must be located within a false ceiling. FIT offers a slim profile, no drain and a means for quick installation. The easy access latches and slide-out components allow for easy maintenance.

- Ideal for multi-family homes
- False ceiling applications
- Superior performance
- Smaller package
- Energy recovery core
- 70cfm and 127 cfm models
- No drain required
- Ceiling bracket included
- Easy mounting
- Removable quick connect terminals
- Easy & convenient electrical connection
- Quiet operation



## FIT 70E

- Up to 70cfm
- Light-weight, 29 lbs.
- 4" side-duct connection

NEW

## FIT 120E

- Up to 127cfm
- Light-weight, 34 lbs.
- 5" side-duct connection

NEW

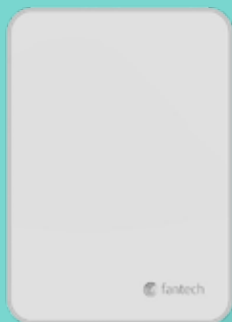
## FIT 120E-D

- Up to 127cfm
- Light-weight, 35 lbs.
- 5" side-duct connection
- Integrated shutoff damper

NEW

## FIT 120E-D-EC

- Up to 129 cfm
- Light-weight, 35 lbs.
- 5" side-duct connection
- Integrated shutoff damper
- With ECM fans



### ECO-Feel®

#### Auto IAQ Control

Multi-function controller with a Total Volatile Organic Compound (TVOC) sensor that allows the FIT Series to operate around resident's needs.

- Optimizes performance (IAQ, RH and temperature)
- Ventilation at RH level of 45%
- 20 minutes ON/40 minutes OFF per hour (low speed)
- VOC spike results in ventilation rate increase
- Screenless design
- Ideal for multi-family residential projects

## FIT SERIES PRODUCT LINE

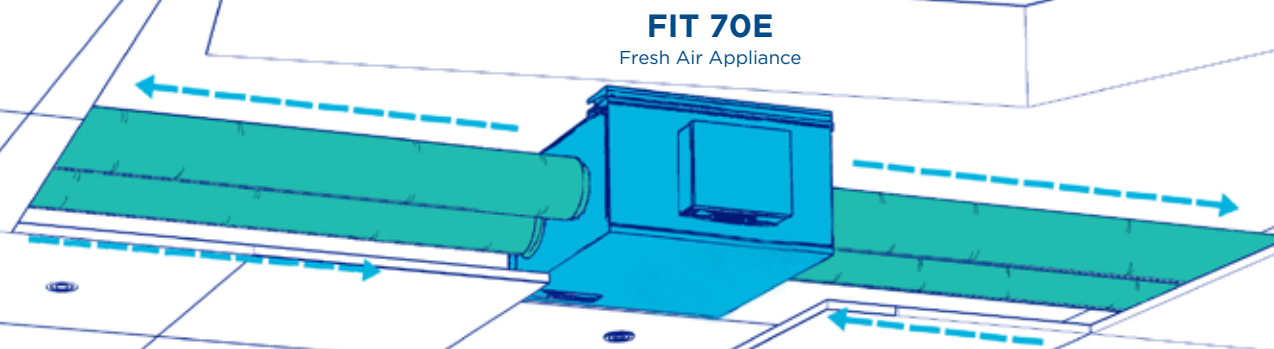
Model		FIT® 70E	FIT® 120E	FIT® 120E-D	FIT® 120E-D-EC
Airflow range (Low / High speed)	cfm @ 0.4" P <sub>s</sub>	35-70	40-127	40-127	40-129
Duct connection	inch	4	5	5	5
Voltage / Phase	V / ~	120/1	120/1	120/1	120/1
Duct type		Round	Round	Round	Round
Consumed power (Low / High speed)	W	40/58	55/104	55/104	23/74
Fan Efficacy @ 0°C/32°F	cfm/W	1.3	0.9	0.9	2.2
Apparent Sensible Recovery Efficiency @ 0°C/32°F	%	78	81	81	80
Sensible Recovery Efficiency @ 0°C/32°F	%	70	74	74	77
Sensible Recovery Efficacy @ -25°C/-13°F	%	34	61	61	61
Total Recovery Efficiency @ 35°C/95°F	%	40	64	64	70
Max current	A	0.6	1.4	1.4	2.3
Defrost cycle		Fan Shutdown	Fan Shutdown	Fan Shutdown	Fan Shutdown
Meets ENERGY STAR® Requirements		-	-	-	Yes
Depth	inch (mm)	19 5/8 (498)	23 5/8 (600)	23 5/8 (600)	23 5/8 (600)
Width	inch (mm)	21 1/2 (546)	24 5/8 (625)	25 (634)	25 (634)
Height	inch (mm)	10 3/8 (264)	10 (254)	10 (254)	10 (254)
Weight	lbs (Kg)	29 (13)	34 (15)	35 (16)	35 (16)

<sup>1</sup>Performance at low speed.

# 1

## SLIM PROFILE

The compact design allows for clean installation in tight spaces with minimal footprint.



# 2

## NO DRAIN

The **FIT Series** doesn't require a drain line in order for a quicker, simplified installation.

# 3

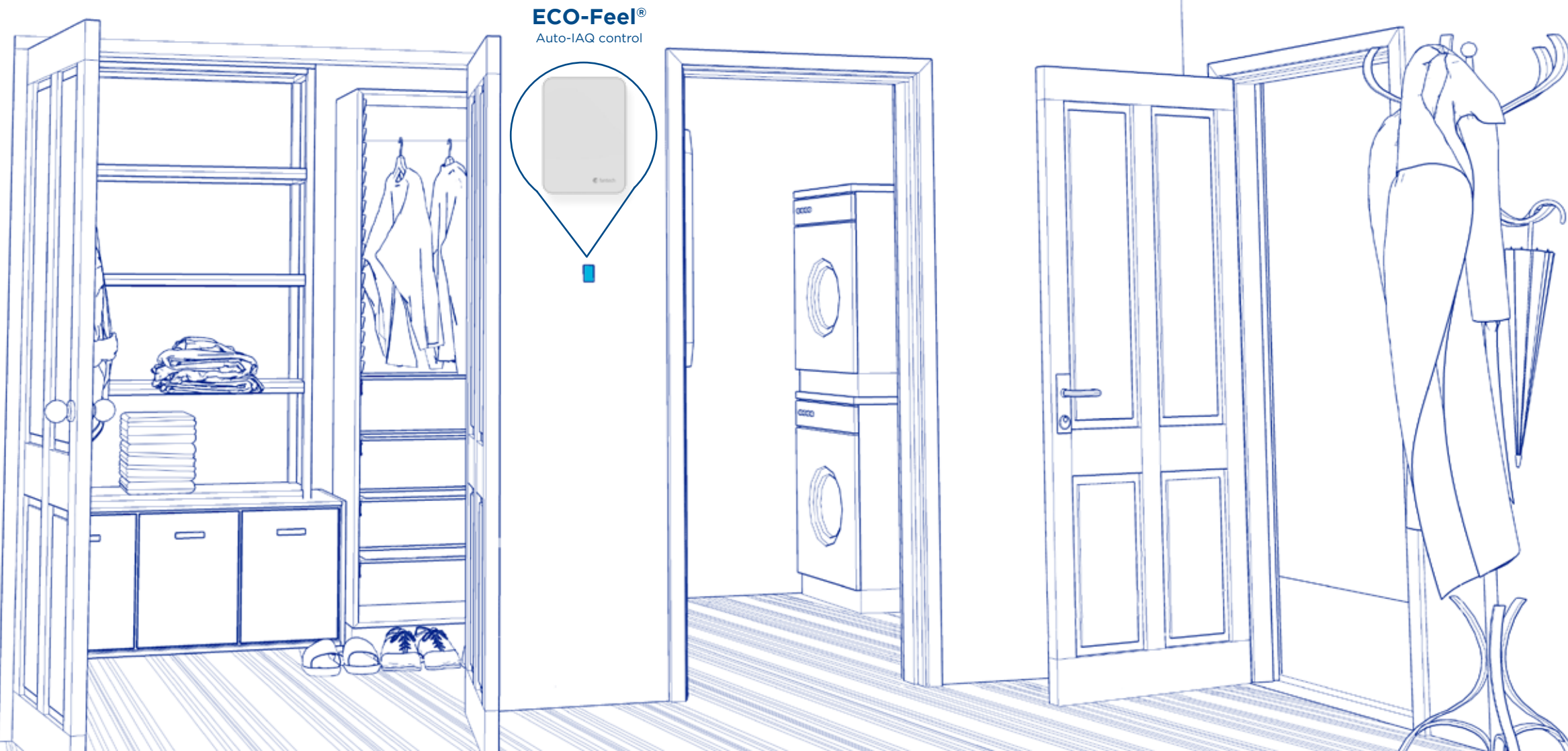
## THOUGHTFUL INSTALLATION

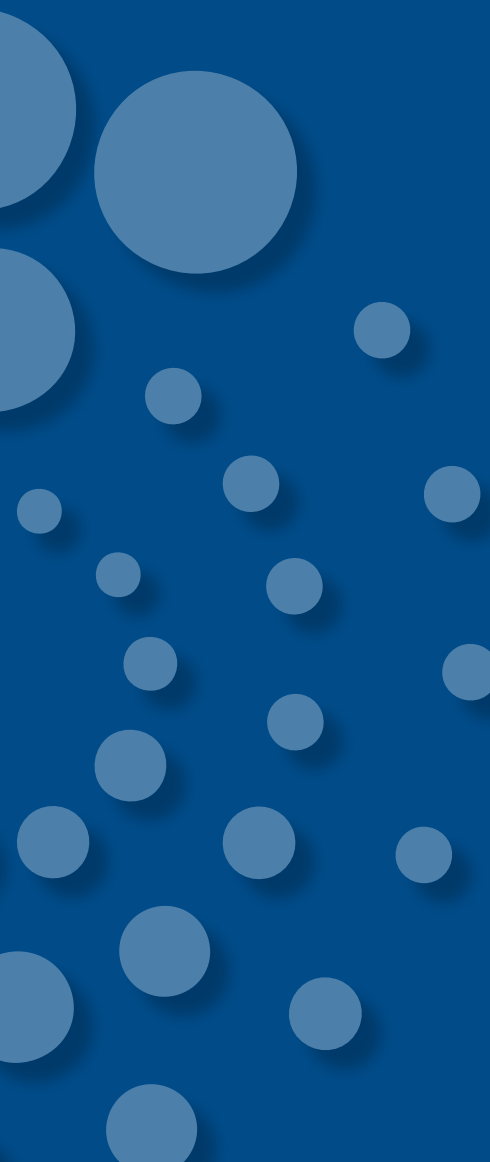
The ceiling bracket allows for easy mounting. Rubber gaskets on collars provide an airtight seal, ensuring no air leakage.

# 4

## ACCESSIBLE ELECTRICAL BOX

External electrical box simplifies field wiring.





**Customer Support:**

**USA** 800.747.1762 • [USsupport@fantech.net](mailto:USsupport@fantech.net)

**CANADA** 800.565.3548 • [CANADAsupport@fantech.net](mailto:CANADAsupport@fantech.net)

**Distributed Locally by:**

Systemair Inc. reserves the right to modify, at any time and without notice, any or all of its products' features, designs, components and specifications to maintain their technological leadership position. The application rendering presented in this brochure is for a visual presentation purpose only. Please, contact a professional for technical guidance.

Zephyr Creative • June 2023 • E1993