



## ACCESSORIES

# Bathroom Ventilation

## Ceiling Grilles and Bulbs for Premium Bath Fans

### PBV

#### Ceiling Grille and Housing

Includes damper and four hanger bars. Fits between 2x6 (PBV 4) or 2x8 (PBV 6) construction.



#### Specification Data

Model	Duct Size, inch	Power, W	Shipping weight, lbs	Shipping class	Item #	MSRP, USD
PBV 4	4	-	4	1	412260	56.-
PBV 6	6	-	4	1	412261	72.-

### PBL

#### Ceiling Grille and Housing with a dimmable LED light

Includes damper, four hanger bars, and a dimmable 7W or 10W LED bulb. Fits between 2x6 construction.



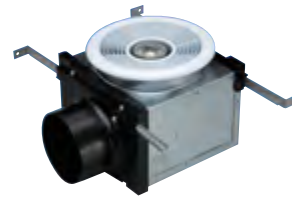
#### Specification Data

Model	Duct Size, inch	Power, W	Shipping weight, lbs	Shipping class	Item #	MSRP, USD
PBL7 4	4	7	4	1	44951	155.-
PBL10 4	4	10	4	1	44952	185.-

### PBH

#### Ceiling Grille and Housing with a Dimmable Halogen Light

Includes damper, four hanger bars and 50-watt halogen bulb. Fits between 2x6 construction.



#### Specification Data

Model	Duct Size, inch	Power, W	Shipping weight, lbs	Shipping class	Item #	MSRP, USD
PBH 4	4	50	4	1	412262	122.-

## REPLACEMENT BULBS FOR LEGACY FANTECH PREMIUM BATH FANS

Here is a list of bulbs that fit your Fantech premium bathroom fan.

PBB7 (item #44916) for PB 110L, PB 270L-2, PB 270LV-2

PBB14 (item #44955) for PB 110F-ES, PB 270FV-2, PB 270F-2

PBB15 (item # 47566) for PB 110F-ES, PB 270F-2ES, PB 270 FV-2ES

PBB50 (item #45156) for PB 110H, PB 270H-2, PB 270HV-2

Find compatible bath fan switch and control accessories in the [Switches and Controls for Ventilation](#) section of accessories.



### PBB

#### Replacement Bulbs for PBL and PBH grilles

PBB L7-ES and PBB L10-ES are dimmable LED bulbs, 3000K, E26 base, wet location, ENERGY STAR®. Use with PB(W)xxxL7 / L10 bathroom fans and PBL7 / 10 ceiling grilles. All replacement packs include 6 bulbs.



PBB50 is a dimmable halogen bulb, GU10 base, wet location. Use with PB(W) 110H, PB 270H-2, PB 270HV-2 bathroom fans and PBH ceiling grilles.

#### Specification Data

Model	Power, W	Lumens	Shipping weight	Item #	MSRP, USD
PBB7-ES Repl. Pack	7	470	2	56063	216.-
PBB10-ES Repl. Pack	10	800	5	56064	367.-
PBB50 Repl. Pack	50	430	1	56065	65.-

### FQ FD

#### Radiation Damper

Fire/Radiation Damper is UL 555C classified for use in 3-hour fire rated floor/ceiling or roof/ceiling assemblies for T-bar, hanger rod/wire ceiling installation. For use with Fantech FQ Series non-lighted exhaust fans. Shipping weight: 2 lbs.



#### Specification Data

Model	Fire rate, hr	Shipping weight, lbs	Shipping class	Item #	MSRP, USD
FQ FD	3	2	1	46975	78.-

### PBB

#### Replacement Bulbs for Legacy PBF Bath Fans

#### Specification Data

Model	Power, W	Base	Grille models	Item #	MSRP, USD
PBB 14	14	GX24	PBF 4	45155	15.-
PBB 15-ES	15	GU24	PBF 4-ES	47566	15.-
PBB 7	7	GU10	PBL 4	44916	41.-

# Switches and Controls for Ventilation

## Speed Control for AC-motor Fans

### WC 15

#### Multipurpose Speed Control

Rotary type variable speed controller with on/off switch. Brushed aluminum switch plate and screws included. Fits a standard single gang box.



#### Specification Data

Model	Voltage, V	Current, A	Shipping weight, lbs	Shipping class	Item #	MSRP, USD
WC 15	120	5	1	1	411102	24.-

### 5ACC..SC

#### Speed Control for Commercial Fans

Variable speed controller permits adjustment of air movement from 100% to approximately 50%. Can be used to operate more than one fan, if the combined total current do not exceed the control rating.



#### Specification Data

Model	Current, A	Shipping weight, lbs	Shipping class	Item #	MSRP, USD
5ACC03SC	3	0.3	1	47185	24.-
5ACC06SC	6	0.3	1	47189	38.-

### RPE

#### Multipurpose Speed Control

Heavy duty rotary type variable speed controller with on/off switch. Brushed aluminum switch plate and screws included.



#### Specification Data

Model	Voltage, V	Current, A	Shipping weight, lbs	Shipping class	Item #	MSRP, USD
RPE 10	120	10	1	1	411101	63.-
RPE 15	120	15	1	1	411384	86.-
RPE 210	230	10	1	1	411385	69.-

### SCD

#### Multipurpose Speed Control

Slide type variable speed controller with on/off switch. White Decora-style switch plate and screws included. Fits standard single gang box.



#### Specification Data

Model	Voltage, V	Current, A	Shipping weight, lbs	Shipping class	Item #	MSRP, USD
SCD 5	120	5	1	1	411381	80.-
SCD 7	120	7.5	1	1	411382	145.-

## Speed control selection guide

Solid State Speed Control <sup>1</sup> for AC-motor Fans				
Model	Type	Voltage, V	Current, A	Use With Fan Models
WC 15	Rotary w/ On-Off	120	5	AC-motor fans with 100% speed-controllable motors. Fan models include PB & PBW bath fans, prioAir (AC models), RVF, FG, FR, CVS, FKD, RE(C), FADE, FRD, and FSD
RPE 10	Rotary w/ On-Off	120	10	
RPE 15	Rotary w/ On-Off	120	15	
RPE 210	Rotary w/ On-Off	230	10	
SCD 5	Decora Slide w/ On-Off	120	5	Commercial AC-motor fan models 5DDD, 5DDU, 5ADE, 2SHE3 and 2VLD
SCD 7	Decora Slide w/ On-Off	120	7.5	
5ACC03SC	Lim. Range Rotary w/ On-OFF	120	3	Commercial AC-motor fan models 5DDD, 5DDU, 5ADE, 2SHE3 and 2VLD
5ACC06SC	Lim. Range Rotary w/ On-OFF	120	6	

<sup>1</sup> Select speed control model for correct voltage and sufficient current capacity.

<sup>2</sup> Some commercial fan model sizes require speed control with greater current capacity (amperage) than is available with these accessory speed control models. Speed control for such fan model sizes must be furnished by others

<sup>3</sup> Not all 2SHE models are compatible with speed control; check specific fan model for suitability.



# Switches and Controls for Ventilation

## Controls for EC-motor Fans

### MTP 10

#### Potentiometer for Manual Speed Control

May be surface or recessed wall mounted for manual speed control of all EC-motor fan models. Input is 10Vdc / Output is 0-10Vdc.



#### Specification Data

Model	Voltage, V dc	IP Class	Shipping weight, lbs	Shipping class	Item #	MSRP, USD
MTP 10	0 - 10	IP 54	1	1	32731	64.-

### DPC 200

#### Constant Pressure Control

This low pressure sensor with analog input and PI controlling mode is used with EC fans for constant pressure applications. The sensor reads the static pressure and regulates the fan's RPMs to maintain a preset desired static pressure.



- Measuring range 0 - 2.0" w.c. Ps
- Analog output 0 - 10Vdc

#### Specification Data

Model	Measuring range, w.c.	Output, Vdc	Shipping weight, lbs	Shipping class	Item #	MSRP, USD
DPC 200	0 - 2.0" P <sub>s</sub>	0 - 10	1	1	484048	638.-

### 5ACC..MS

#### Motor Disconnect Switch (NEMA)

Provides manual "On-Off" control of single or three phase AC motors where overload protection is not required or is provided separately.



5ACC 01MS: 120/230/460V, 30A  
5ACC 02MS: 208/230/460V, 30A

#### Specification Data

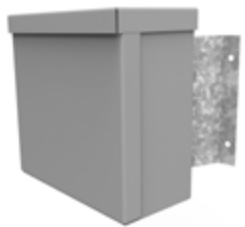
Model	Poles	Max HP	Shipping weight, lbs	Shipping class	Item #	MSRP, USD
5ACC01MS	2	3	1	1	47182	136.-
5ACC02MS	3	10	1	1	47183	286.-

### EC EMT

#### Exterior Mount Control Enclosure



Accessory kit for locating the fan control of a 5DDU EC fan onto the fan shell's exterior or other outdoor location.



Kit includes a NEMA 3R enclosure and a mounting bracket.

#### Specification Data

Model	Shipping weight, lbs	Shipping class	Item #	MSRP, USD
EC EMT	1	1	483340	124.-

## Switches and Timers

### FD 60EM

#### Bathroom Timer

Electronic push button timer. Select from 10, 20, 30 and 60 minute timed operation of fan. Fits standard single gang box. Ideal for multiple switching locations. Three panel colors. Switch plate not included.



#### Specification Data

Model	Voltage, V	Current, A	Shipping weight, lbs	Shipping class	Item #	MSRP, USD
FD 60EM	120	20	1	1	411386	66.-

### FTD 7

#### 7 Day Digital Timer

An electronic 7 day timer with an automatic summer/winter time settings. Two outlets, 8 on/off programs.



#### Specification Data

Model	Voltage, V	Current, A	Shipping weight, lbs	Shipping class	Item #	MSRP, USD
FTD 7	120	15	1	1	49792	45.-

### FLD 60

#### Bathroom Light/Fan Switch

Designed as a replacement for the bathroom fan and light switch. By using a microprocessor to monitor and control fan operation, a precise amount of ventilation can be provided. Allows continuous operation of the fan for up to 1 hour after light switch is turned off.



#### Specification Data

Model	Voltage, V	Current, A	Shipping weight, lbs	Shipping class	Item #	MSRP, USD
FLD 60	120	20	1	1	411388	110.-

### VT 20

#### Programmable Bath/Ventilation Fan Control

The ultimate programmable 20 minute boost timer. Can be used to satisfy ASHRAE 62.2 Whole Building Ventilation requirements. Features easy-set slide adjustment for fan speed and run-time per hour. Controls are hidden under cover plate. Use with up to three VT20A (Auxiliary Controls) to allow 20 minute high speed boost in up to four locations.



#### Specification Data

Model	Voltage, V	Current, A	Shipping weight, lbs	Shipping class	Item #	MSRP, USD
VT 20M	120	2.5	1	1	45386	63.-
VT 20A	120	2.5	1	1	45385	20.-

## Sensing Switches and Condition Control

### ACCS

#### AC Current Sensing Switch

Current sensing switch relay. 120V, 2.5 A.



#### Specification Data

Model	Max Current, A	Shipping weight, lbs	Shipping class	Item #	MSRP, USD
ACCS 40	2.5	1	1	40361	70.-

### FPS

#### Pos/Neg Pressure Switch

Universal pressure switch (120V). Adjustable between .05" to 1.0" water differential pressure. Using either positive or negative pressure sensing for duct line.



#### Specification Data

Model	Max Current, A	Shipping weight, lbs	Shipping class	Item #	MSRP, USD
FPS 10	10	2	1	411390	62.-

### AS DS

#### Door Switch

Electronic detection mechanical switch. It also has two contacts to separately monitor the open/closed status of the door and the status of the lock.



### FAT 10

#### Attic Thermostat

Thermostat for use with attic ventilation systems. Adjustable between 80° and 130° F.



#### Specification Data

Model	Voltage, V	Current, A	Weight, lbs	Item #	MSRP, USD
FAT 10	120	22	1	411233	62.-

### FH 20

#### Dehumidistat

Wall mounted dehumidistat. Adjustable between 20% and 80% relative humidity. A white powder-coated finish. Voltage 120V.



#### Specification Data

Model	Current, A	Shipping weight, lbs	Shipping class	Item #	MSRP, USD
FH 20	7.5	1	1	410727	38.-

#### Specification Data

Model	Contact	Weight, lbs	Item #	MSRP, USD
AS DS	Closed / Open	2	411392	110.-

# Switches and Controls for Ventilation

## Controls for Heat and Energy Recovery Ventilators

### EDF 7

#### Electronic Multifunction Dehumidistat

An electronic multifunction dehumidistat that is compatible with all Fantech's HRV/ERV (except SH/VH 704). This control has 3 possible modes of operations: Ventilation mode, Recirculation mode and Standby.

Dimensions 3 5/8" (w) x 4 7/8" (h) x 7/8" (d).

In AUTO Mode, the EDF7 will activate normal speed ventilation when the indoor relative humidity is above the desired set point. During summer, the AUTO Mode can be deactivated to lower energy consumption. Shipping Class 1.

- Desired relative humidity set point
- User selected speed: Low, Medium, Normal and 20 min/hr
- LCD Backlit screen
- Summer mode allows user to deactivate dehumidistat
- Indoor relative humidity is displayed
- No battery to replace



### ECO-Touch™

#### Programmable Wall Control

Technologically advanced and feature-rich; the ECO-touch provides contractors and homeowners with a higher level of control over indoor air quality. The MAX mode gives you the extra ventilating power you need to quickly clear the air by taking advantage of the system's powerful fans.

- Preferences for desired indoor relative humidity
- Ventilation movement is displayed on LCD backlit touch screen
- 20 minute ventilation / 40 minute recirculation mode



#### Specification Data

Model	Shipping weight, lbs	Shipping class	Item #	MSRP, USD
ECO-Touch	1	1	44929	140.-

### RTS

#### Pushbutton Timer

The pushbutton timer is compatible with Fantech SHR, VHR and SER series models. The button activates the system to run in continuous mode for a period of time, it then returns to the predetermined setting. To cancel this operation, simply press the button a second time.



#### Specification Data

Model	Boost Time, min	Shipping weight, lbs	Shipping class	Item #	MSRP, USD
RTS 2	20	1	1	40164	22.-
RTS 3*	20-40-60	1	1	40376	43.-
RTS 5 *	20-40-60	1	1	44794	43.-

\* Look at the available accessories for the HRV or ERV you've selected to determine if the RTS3 or RTS5 should be used

### MDEH

#### Low Voltage Dehumidistat

2-wire low voltage dehumidistat control with rotary dial. Just turn the dial to set the humidity level. Multiple units can be used with Fantech HRV's. Install in bathrooms, kitchen or laundry for easy access.



Model	Switch ON-OFF	Shipping weight, lbs	Shipping class	Item #	MSRP, USD
MDEH 1	-	1	1	40172	26.-

#### Specification Data

Model	Voltage, V	Recirculation Cycle	Weight, lbs	Item #	MSRP, USD
EDF 7	12	Yes	1	44883	83.-

### EDF

#### Triple Function Wall Control Timer

An electronic wall control timer is compatible with all Fantech HRV/ERV models (except SH/VH 704). This control activates the system on 3 possible modes of operation: continuous low speed operation (Green), Intermittent 20 minutes on, 40 minutes off (Yellow) and continuous high speed or boost (Red).



#### Specification Data

Model	Recirculation Cycle	Shipping weight, lbs	Shipping class	Item #	MSRP, USD
EDF 1R	Yes	1	1	40393	50.-
EDF 1	No	1	1	40375	50.-

# Appurtenances for Ducted Air Systems

## Indoor Grilles

### MGS

#### Metal Supply Grille

This grille has a shielding device for producing a directional distribution pattern and has an adjustable gap grilles. The grille is manufactured from sheet metal with a white powder-coated finish.



- Easy installation either into the mounting frame or directly onto the duct
- For supply and exhaust air
- The airflow is adjusted by rotating the plate

#### Specification Data

Model	Duct Size, inch	Shipping weight, lbs	Shipping class	Item #	MSRP, USD
MGS 4	4	1	1	411368	28.-
MGS 5	5	2	1	411369	29.-
MGS 6	6	2	1	411242	36.-
MGS 8	8	3	1	411243	45.-

### DG

#### Designer Exhaust Grille

A low profile, fixed circular plastic exhaust grille. Included with the grille is a matching diameter galvanized mounting collar with nailing strip.



DG models with collar for easy installation.

#### Specification Data

Model	Duct Size, inch	Shipping weight, lbs	Shipping class	Item #	MSRP, USD
DG 4	4	1	1	411363	13.-
DG 6	6	2	1	411364	15.-

### CG

#### Contour Grille

Grilles are manufactured of flame retardant, polypropylene that resist yellowing. White matte finish can be painted to match walls or ceiling.



- Easy installation either into the mounting frame or directly onto the duct
- For supply and exhaust air
- The airflow is adjusted by rotating the valve cone

### MGE

#### Metal Exhaust Grille

An exhaust diffuser for installation on ceiling or wall. It can also be used for supply air. The diffuser has a lockable central cone, which is rotated to adjust the pressure and consequently the air volume. Can be used for supply air.



- Easy installation either into the mounting frame or directly onto the duct
- For supply and exhaust air
- The airflow is adjusted by rotating the valve cone

#### Specification Data

Model	Duct Size, inch	Shipping weight, lbs	Shipping class	Item #	MSRP, USD
MGE 4	4	1	1	411106	19.-
MGE 5	5	2	1	411370	22.-
MGE 6	6	2	1	411371	27.-
MGE 8	8	3	1	411244	41.-

### DGD

#### Designer Exhaust Grille

A low profile, fixed circular plastic exhaust grille. Included with the grille is a matching diameter galvanized mounting collar with nailing strip. For vertical installation only.



DGD models come with collar and back draft damper.

#### Specification Data

Model	Duct Size, inch	Shipping weight, lbs	Shipping class	Item #	MSRP, USD
DGD 4	4	2	1	411365	33.-
DGD 6	6	3	1	411118	41.-

#### Specification Data

Model	Duct Size, inch	Shipping weight, lbs	Shipping class	Item #	MSRP, USD
CG 4	4	1	1	40306	19.-
CG 5	5	1	1	40308	21.-
CG 6	6	2	1	40309	23.-

# Appurtenances for Ducted Air Systems

## Inlets and Outlets

### HS Louvered Shutter for Exhaust



Plastic louvered shutter with duct connection. For exhaust air only. Used with premium bathroom fans or dryer exhaust.

#### Specification Data

Model	Duct Size, inch	Shipping weight, lbs	Shipping class	Item #	MSRP, USD
HS 4W	4	1	1	45151	13.-
HS 6W	6	1	1	45153	18.-

### FML Metal Hoods for Supply



A single prepainted aluminum hood with a white powder-coated finish for supply and exhaust applications. Equipped with a bug screen.

#### Specification Data

Model	Duct Size, inch	Shipping weight, lbs	Shipping class	Item #	MSRP, USD
FML 8	8	2	1	45148	48.-
FML 10	10	3	1	45149	64.-
FML 12	12	3	1	45150	97.-
FML 14	14	4	1	492576	112.-

### COM Supply and Exhaust Hoods



Pair of Supply and Exhaust hoods with metal collars. COM 4P thru 6P are manufactured from white plastic. COM6M is manufactured from metal. White painted housing.

#### Specification Data

Model	Duct, inch	Duct Length* inch	Shipping weight, lbs	Shipping class	Item #	MSRP, USD
COM 4P	4	12 1/4 (11 1/8)	5	1	40369	31.-
COM 5P	5	13 1/2 (12 1/2)	5	1	40223	43.-
COM 6P	6	13 1/2 (12 1/2)	5	1	40222	48.-
COM 6M	6	3 1/4 (3 1/4)	4	1	40221	84.-

\* Supply (Exhaust) duct

### IG Inlet Guard



Wire ring inlet guard used to prevent foreign objects from entering duct line. Zinc chromate plated steel.

#### Specification Data

Model	Duct size, inch	Shipping weight, lbs	Shipping class	Item #	MSRP, USD
IG 4	4	1	1	411301	8.-
IG 5	5	1	1	411126	8.-
IG 6	6	1	1	411109	8.-
IG 8	8	2	1	411127	11.-
IG 10	10	2	1	411124	15.-
IG 12	12	2	1	411128	19.-

### RC Roof Cap



Roof Cap with damper flap closure, duct connection and screened exhaust opening.

#### Specification Data

Model	Duct size, inch	Shipping weight, lbs	Shipping class	Item #	MSRP, USD
RC 4	4	2	1	411310	23.-
RC 5	4	3	1	411311	93.-
RC 6	6	3	1	411312	102.-
RC 8	8	5	1	411313	118.-
RC 10	10	7	1	411314	145.-
RC 12	12	9	1	411315	165.-

# Appurtenances for Ducted Air Systems

## Duct and Duct-mounted Components

### FIDT Insulated Flex Duct



Flexible round insulated duct. The insulation provides greater thermal efficiency to save energy. The product is also covered in a heavy duty, silver jacket for durability. The duct is UL listed. Available in 25-foot lengths.

#### Specification Data

Model	Duct size, inch	Shipping weight, lbs	Shipping class	Item #	MSRP, USD
FIDT 4	4	7	1	411061	36.-
FIDT 5	5	8	1	411062	41.-
FIDT 6	6	9	1	411064	47.-
FIDT 8	8	11	1	411065	57.-
FIDT 10	10	13	1	411322	69.-

### FC Mounting Clamps



Mounting clips which facilitate the installation and removal of fans for service and cleaning. Made from galvanized sheet metal and fitted with an 1/3" neoprene lining which suppresses vibration and ensures a tight fit. The mounting clips are clamped together by two screws, which allow for connecting ducts with a marginal difference in diameter. Sold in pairs.

#### Specification Data

Model	Diameter, inch	Shipping weight, lbs	Shipping class	Item #	MSRP, USD
FC 4	4	1	1	411295	20.-
FC 5	5	1	1	411108	26.-
FC 6	6	2	1	411120	28.-
FC 8	8	3	1	411121	30.-
FC 10	10	3	1	411122	33.-
FC 12	12	4	1	411123	36.-
FC 12-315	315 mm	4	1	45157	39.-
FC 14	14	4	1	45233	48.-

### FEL 4 4" Elbow



Heavy-duty plastic 90° mounting collar/elbow for use in 2x4 stud walls. With half-inch drywall lip already set, just nail in place and connect duct. Low depth profile makes this elbow the perfect solution for sidewall ventilation within a wall partition. Suitable for 4-inch ducts.

#### Specification Data

Model	Duct Size, inch	Shipping weight, lbs	Shipping class	Item #	MSRP, USD
FEL 4	4	2	1	45154	11.-

### FY Y-Connector for circular ducts



Made of galvanized sheet metal.

#### Specification Data

Model	Duct size, inch	Shipping weight, lbs	Shipping class	Item #	MSRP, USD
FY 4	4 x 4 x 4	2	1	411249	33.-
FY 5	5 x 5 x 5	2	1	411250	39.-
FY 6	6 x 6 x 6	2	1	411251	43.-
FY 644	6 x 4 x 4	2	1	412472	45.-
FY 664	6 x 6 x 4	2	1	45114	46.-
FY 866	8 x 6 x 6	3	1	411252	52.-
FY 8	8 x 8 x 8	3	1	411253	52.-
FY 810	10 x 8 x 8	4	1	411254	59.-

### CKR Duct Reducer



Round, concentric, galvanized metal duct size transition fitting.

#### Specification Data

Model	Diameter, inch	Shipping weight, lbs	Shipping class	Item #	MSRP, USD
CKR 10-12	10 to 12	1	1	411970	19.-

# Appurtenances for Ducted Air Systems

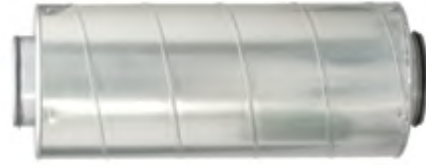
## Duct and Duct-mounted Components

### LD

#### Silencer for circular ducts

Easily-fitted silencer for circular ducts, fitted with a connection, which is compatible with a standard spiral duct. The LD effectively reduces noise in the duct. Two silencers can be used together in installations where noise reduction is critical. For the most effective noise reduction, the silencer should be fitted immediately behind a fan or bend.

- Insulation thickness 2 inches



Model	Duct, inch (mm)	Length, inch	Shipping weight, lbs	Shipping class	Item #	MSRP, USD
LD 4	4	23 <sup>5</sup> / <sub>8</sub>	13	1	411282	102.-
LD 5	5	23 <sup>5</sup> / <sub>8</sub>	16	1	411283	115.-
LD 6	6	23 <sup>5</sup> / <sub>8</sub>	17	1	411284	133.-
LD 8	8	23 <sup>5</sup> / <sub>8</sub>	20	1	411125	150.-
LD 10	10	35 <sup>1</sup> / <sub>2</sub>	26	1	411286	232.-
LD 12	12 (315)	35 <sup>1</sup> / <sub>2</sub>	35	1	411287	300.-
LD 14	14	35 <sup>1</sup> / <sub>2</sub>	44	1	483558	351.-
LD 16	16	35 <sup>1</sup> / <sub>2</sub>	56	1	411288	359.-

### RSK

#### Backdraft Damper

Backdraft damper for circular ducts, manufactured from galvanized sheet metal. The two blades are spring-loaded. Every damper is built with performance in mind. The damper can be mounted vertically.



Model	Duct, inch	Length, inch	Shipping weight, lbs	Shipping class	Item #	MSRP, USD
RSK 4	4	3 <sup>1</sup> / <sub>4</sub>	1	1	411112	16.-
RSK 5	5	3 <sup>1</sup> / <sub>8</sub>	1	1	411113	19.-
RSK 6	6	3 <sup>1</sup> / <sub>8</sub>	1	1	411114	20.-
RSK 8	8	3 <sup>1</sup> / <sub>8</sub>	1	1	411115	29.-
RSK 10	10	3	2	1	411116	35.-
RSK 12	12	3	2	1	411117	47.-
RSK 14	14	6 <sup>3</sup> / <sub>8</sub>	4	1	411198	147.-
RSK 16	16	6 <sup>3</sup> / <sub>8</sub>	5	1	45125	183.-

### FGR

#### Filter Cassette

Cabinet is manufactured from galvanized sheet steel. Shipping class 1.



FGR 8 is shown.

#### Specification Data for Filter Cassettes

Model	Filter Type	Shipping weight	Max airflow	Item #	MSRP
		lbs	cfm		
FGR 8	MERV 6	7	480	44684	128.-
FGR 10	MERV 6	7	480	44685	153.-
FGR 12	MERV 6	9	645	44686	177.-
FGR 12HV	MERV 8	35	2,075	49896	292.-
FGR 14HV	MERV 8	34	2,075	49895	294.-

### FGR RFP

#### Replacement Filter Packs

A pack of supply air filters for filter cassettes FGR. Filter class MERV6 (MERV8 for FGR 12/14HV). Shipping class 1.



FGR 8/10 RFP is shown

#### Specification Data for Replacement Filters

Model	Quantity per pack	Shipping weight, lbs	Item #	MSRP, USD
FGR 8/10 Replacement Filter Pack	6	2	56060	47.-
FGR 12 Replacement Filter Pack	6	3	56061	61.-
FGR 12/14HV Replacement Filter Pack	12	15	56062	311.-

# Appurtenances for Ducted Air Systems

## Duct and Duct-mounted Components

### ADC

#### Shut-off Damper w/motor

Shut-off damper ADC is a turn off damper. The damper is provided with 24V AC motor with spring return actuator. Power connects to a connection block inside the electrical box. Positive closure is provided by a tight seal.

- Power Open Spring Closed (POSC)



#### Specification Data

Model	Duct size	Voltage	NC/NO	Shipping weight	Shipping class	Item #	MSRP
	inch	V		lbs			
ADC 4	4	24	NC	4	1	44966	107.-
ADC 6	6	24	NC	5	1	44967	107.-
ADC 8	8	24	NC	5	1	44690	115.-
ADC 10	10	24	NC	6	1	44691	121.-
ADC 12	12	24	NC	7	1	44692	131.-
ADC 14	14	24	NC	7	1	46245	149.-

### EM-WX

#### Electric Heater

Duct heater with spigot connection for standard spiral circular ducts. Manufactured from Aluzinc-coated sheet metal. The heater maintains discharge air temperature set point. The unit is controlled by an integral electronic temperature regulator. Automatic reset at 135°F / 150°F / 180°F.



#### Specification Data

Model	Duct size	Rated power	Voltage	Max amps	Shipping weight	Shipping class	Item #	MSRP
	inch	kW / BTUh	V	A	lbs			
EM-WX 10	10	10 / 34,140	240 / 1	42	36	1	44688	995.-
EM-WX 12	12	20 / 68,280	240 / 1	80	50	1	497836	1,686.-
EM-WX 14	14	20 / 68,280	240 / 1	80	49	1	497860	1,703.-

# Appurtenances for Ducted Air Systems

## Duct and Duct-mounted Components

### IR

#### Iris Damper

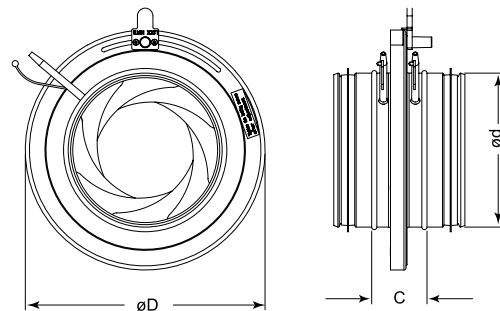
The Iris Damper is the ideal device for measuring and adjusting airflow through a duct. The design of the adjustable aperture ensures low turbulence resulting in minimal self-generated noise. The damper is manufactured from galvanized sheet metal and is fitted with a rubber seal tested for air-tightness. The IR enables the taking of precise air flow measurements at all points including points close to duct deviations such as T junctions and bends, and points in front of other supply-air devices.

#### Specification Data

Model	ød	øD	C	Shipping weight, lbs	Shipping class	Item #	MSRP, USD
IR 4	4	6 1/2	2 1/4	2	1	411234	65.-
IR 5	5	8 1/4	2 1/2	3	1	411235	67.-
IR 6	6	9	2	4	1	411236	71.-
IR 8	8	11 1/4	2 1/4	5	1	411237	83.-
IR 10	10	13	2 1/4	7	1	411238	141.-
IR 12	12	16	2 1/8	8	1	411239	165.-
IR 16	16	22	3 1/4	12	1	411240	376.-



#### Dimensions



# Application-specific Ventilation Accessories

## Residential Kitchen Exhaust

### HL Baffle

#### Baffle, Replacement 14"x12"

Stainless steel baffle filter replacement for HL series kitchen hood liners. Quantity of one baffle filter included.

**Note:** Hood liner models require multiple baffle filters: order the quantity appropriate for the HL model.

#### Specification Data

Model	Shipping weight, lbs	Shipping class	Item #	MSRP, USD
HL Baffle	3	1	484139	140.-



### HL Knob

#### Knob, Metal Replacement

Metal control knob replaces the light dimmer switch knob and the fan speed control switch knob on HL series kitchen hood liners.

Quantity two knobs included.

#### Specification Data

Model	Shipping weight, lbs	Shipping class	Item #	MSRP, USD
HL Knob	1	1	484136	15.-



# Application-specific Ventilation Accessories

## Residential-capacity Dryer Exhaust

### DBLT 4W

#### Lint Trap for Dryer Exhaust Fans

Galvanized metal lint trap for dryer exhausting applications. Use when duct length between dryer and fan is less than 15 feet. Fits 4-inch duct.

Features pull out white door with a view window with attached removable lint filter for easy cleaning and 1/2" flange for flush mount installation. The lint trap complements all Fantech dryer exhaust fans.

#### Specification Data

Model	Duct Size, inch	Shipping weight, lbs	Shipping class	Item #	MSRP, USD
DBLT 4W	4	4	1	46000	52.-



### DB 10

#### Pressure Switch

Automatic pressure switch (120V) allows for fully automatic operation of dryer exhaust fan. Fan runs for 10 minutes when positive pressure is sensed in the duct line then shuts off and turns on again as needed.

#### Specification Data

Model	Max Current, A	Shipping weight, lbs	Shipping class	Item #	MSRP, USD
DB 10	3.8	1	1	411110	93.-



## Radon Mitigation Systems

### FRIK

#### Radon Installation Kit

Kits include a pair of flexible white couplings with stainless steel hose clamps, a U-tube manometer and radon system labels. FRIK SLQ includes the U-tube manometer and radon system labels only.

Model	Used with (fan models)	PVC pipe size, inch	Shipping weight, lbs	Shipping class	Item #	MSRP, USD
FRIK 190-3	HP 190	3	3	1	44960	60.-
FRIK 190-4	HP 190	4	3	1	44961	60.-
FRIK 2190-3	HP 2133 & 2190	3	3	1	44962	60.-
FRIK 2190-4	HP 2133 & 2190	4	3	1	44963	60.-
FRIK 220	HP 220	4	4	1	44964	60.-
FRIK SLQ	comes with manometer only		1	1	44965	20.-



### Hi Alt Retrofit Switch for DBF 4XLT

Field-installed retrofit switch for a dryer exhaust fan installed in a high altitude location. Use only with fan model DBF 4XLT (not compatible with other DBF/DEDPV units). Recommended for installations above 7,000 ft elevation.

#### Specification Data

Model	Shipping weight, lbs	Shipping class	Item #	MSRP, USD
Hi-Alt RS	1	1	413568	132.-



## HEPA Filtration

### RHF / RPFH

#### Replacement Filter

Replacement filter includes 1 HEPA filter. Filter also available in bulk of 12 pack RHF 1315B or RHF 16B. Shipping Class 1.



#### Specification data

Model	Filter type	Qty per package	Shipping weight, lbs	Item #	MSRP, USD
RPFH 1315	Pre-filter/Carbon	1	3	40195	38.-
RPFH 1315B	Pre-filter/Carbon	24	19	40196	681.-
RHF 16	HEPA	1	3	40193	121.-
RHF 16B	HEPA	12	22	40194	1,029.-