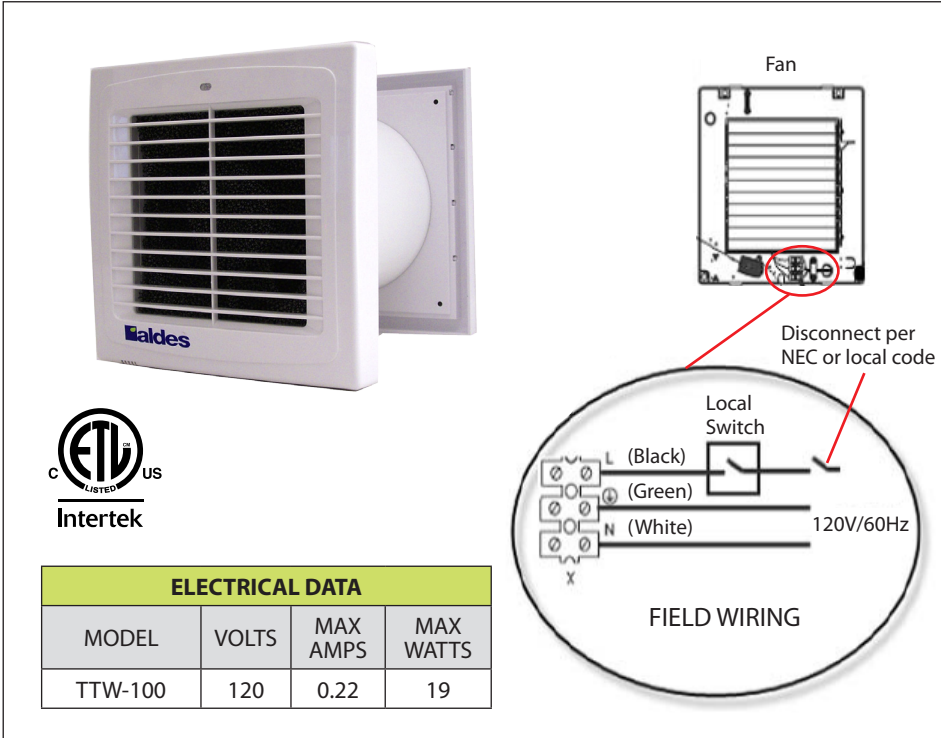




FANS
TTW-100
Through-the-Wall Ventilator

INSTALLATION
OPERATION
MAINTENANCE

READ AND SAVE THESE INSTRUCTIONS



ELECTRICAL DATA			
MODEL	VOLTS	MAX AMPS	MAX WATTS
TTW-100	120	0.22	19

WARNING: TO REDUCE THE RISK OF FIRE, ELECTRIC SHOCK, OR INJURY TO PERSONS, READ THE INSTRUCTIONS CAREFULLY.

1. Use this unit only in the manner intended by the manufacturer. If you have questions, contact the manufacturer.
2. Before servicing or cleaning the unit, switch OFF the power at the service panel and lock it to prevent power from being switched on accidentally. When the power cannot be locked securely, fasten a prominent warning device, such as a tag, to the service panel.
3. Installation work and electrical wiring must be done by qualified person(s) in accordance with all applicable codes and standard, including fire codes and standards.
4. Sufficient air is needed for proper combustion and exhausting of gases through the flue (chimney) of fuel-burning equipment (if present). To prevent backdrafting, follow the heating equipment manufacturer's

- guidelines and safety standards, such as those published by the National Fire Protection Association (NFPA) and the American Society for Heating, Refrigeration and Air-Conditioning Engineers (ASHRAE), and the local code authorities.
5. When cutting or drilling into a wall or ceiling, do not damage electrical wiring and other concealed utilities.
 6. Fans with ducts must always be vented to the outdoors.
 7. This unit may have sharp edges. Use caution to avoid being cut while installing and cleaning.
 8. This unit must be grounded.

CAUTION:

1. For general ventilation use only. For use in non-fire-rated installations only. Do not use to exhaust hazardous or explosive materials or vapors. Do not install in a cooking area.
2. Install in interior wall, at least 7 feet above the floor.
3. To avoid motor damage and/or noise from an imbalanced impeller, keep

- drywall spray, construction dust, etc., off power unit.
4. Before installation, inspect fan housing for loose parts that may cause damage when the fan is operated.
 5. Please read the specification label on the product for further information and requirements.
 6. Not for installation by children or any person who is unable to follow these safety guidelines.
 7. Provide separate wall switch rated for motor duty (120 V, 1A).
 8. Do not close or block unit inlets and outlets in order to allow optimal air passage. Do not sit on or put objects on the unit.
 9. Before installation, the fan must be properly stored indoors and protected from water damage.

The unit's axial fan is designed for exhaust ventilation of small-and-medium-sized rooms. Fans are made of white plastic.

Package includes:

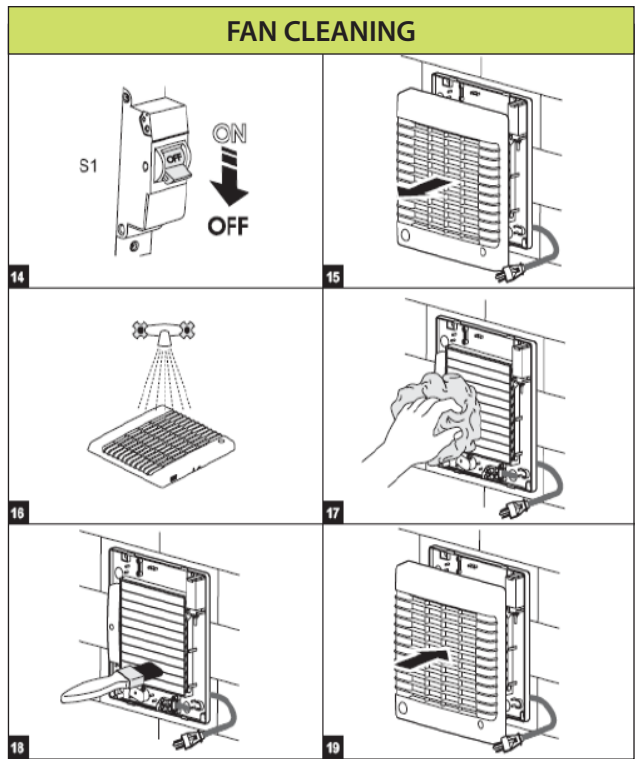
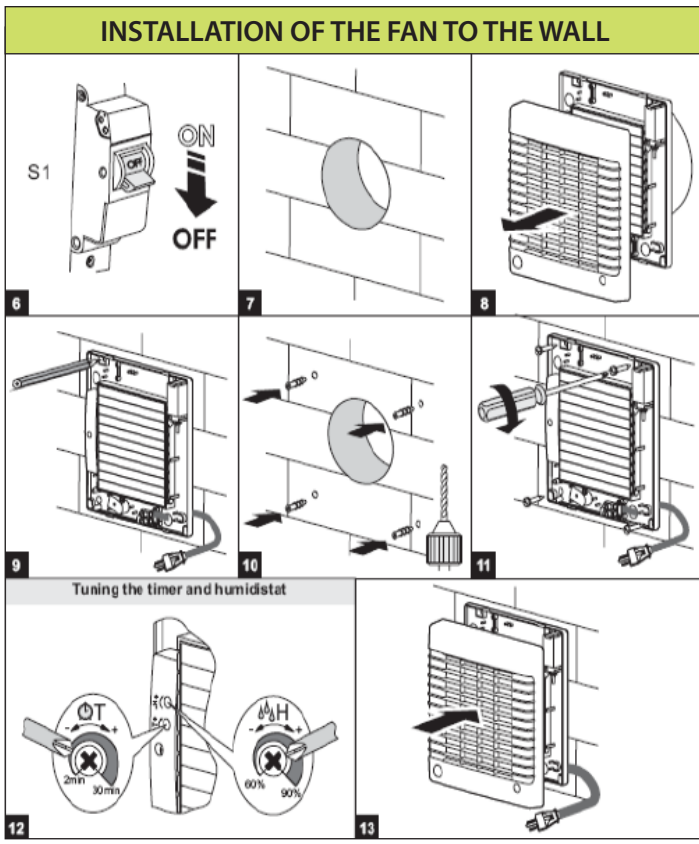
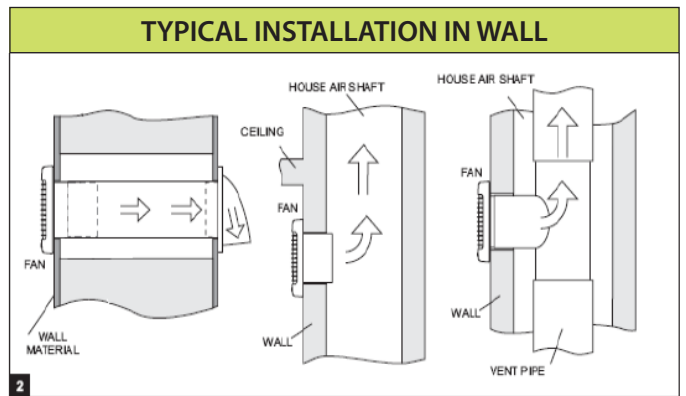
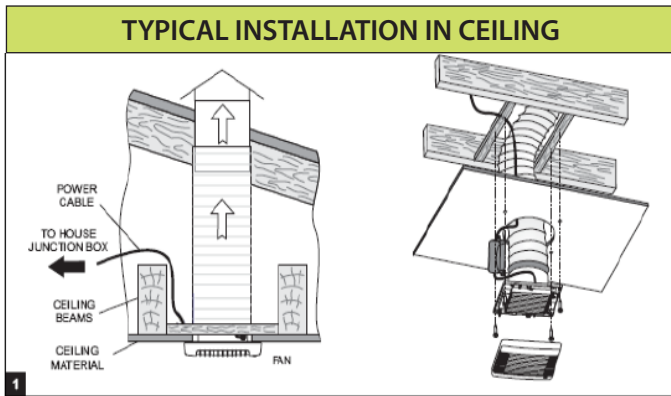
- Fan
- Adjustable sleeve
- Exterior gravity louver damper
- Screws with anchors
- User manual

Fans are compatible with 5" (125mm) duct openings. Fans can be mounted horizontally or vertically through the wall, to the ceiling, into a ventilation shaft, or to round duct.

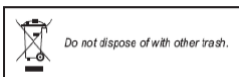
Input: 120V AC 60 Hz.

Fans are designed for long-term continuous or intermittent operation. Airflow direction is indicated on the fan case. Fans can be operated at ambient temperatures between -40 °F and 170°F.

Protection rating from access to dangerous parts and water penetration of the TTW-100 is IP34.



Cord set not included in all models. **Figure 10** shows the adjustment of the timer and dehumidistat (not available on model TTW-100).



Fan surfaces need to be cleaned regularly from dirt and dust. See **Figures 14-19**. Clean with a soft cloth, using a solution of water and a cleaning agent. Avoid getting liquid on electric motor. After cleaning, the surface must be wiped dry.

WARRANTY

TTW-100 Fans are ETL listed and labeled to meet U.S. and Canadian standards. Manufacturer guarantees normal operation of the unit for one (1) year from the date of sale, subject to the fulfillment of transport, storage, installation, and operating specifications. If proof of sales date is absent, warranty period is calculated from the production date. In the occurrence of failure due to faulty equipment during the warranty period, the consumer has the right to exchange the unit. This unit can be exchanged by contacting American ALDES at the address listed below. Manufacturer is not responsible for damages resulting from the unit or by gross mechanical alteration.

© 2014 American ALDES Ventilation Corporation. Reproduction or distribution, in whole or in part, of this document, in any form or by any means, without the express written consent of American ALDES Ventilation Corporation, is strictly prohibited. The information contained within this document is subject to change without prior written notice.